

About the program

Detailed information about this software:

- Title : 1st Security Agent
- Target OS : All Windows
- Copyright : Ixis Research, Ltd.
- Email Address: <http://www.softheap.com/contact.html>
- Home Page: <http://www.softheap.com/newadmin.html>
- Software Type: Shareware
- Registration Fee: \$49
- Registration Form: <http://www.softheap.com/newadminpurchase.html>

Pricing:

1 license = \$49
2 licenses = \$85
5 licenses = \$195
10 licenses = \$280
15 licenses = \$350
20 licenses = \$420
25 licenses = \$480
30 licenses = \$510
40 licenses = \$550
50 licenses = \$590
60 licenses = \$630
70 licenses = \$670
80 licenses = \$690
90 licenses = \$720
100 licenses = \$750
150 licenses = \$770
200 licenses = \$800
Site license = \$950

See also:

- [Purpose of the program.](#)
- [How to use.](#)
- [How to spy on your PC users.](#)
- [How to lock your personal computer with a password.](#)
- [How to register.](#)
- [Technical support.](#)

[Purpose of the program](#)

1st Security Agent is an excellent password-protected security utility to secure Windows-based computers. It works under any Windows platform and offers an administrative support for controlling which users are allowed to access your computer and the level of access each user may have. You can choose to restrict access to lots of Control Panel applet functions, including Display, Network, Passwords, Printers, System, Add/Remove Programs, etc. You can also assign separate system profile folders to each user, providing each with their own custom Desktop, Start Menu, Favorites, My Documents, etc. Additionally, you can: disable Start Menu items, hide local, network and USB drives, disable the DOS prompt, boot keys, real DOS mode, Registry editing, taskbar, task manager, and network access, hide desktop icons, and much more. You can apply password protection to Windows and restrict users to running specific applications only. Security restrictions can be applied universally or just to specific users. 1st Security Agent also supports Internet Explorer security that enables you to customize many aspects of the Internet Explorer Web browser. It lets you disable individual menu items, prevent others from editing your Favorites, disable individual tabs in the Internet Options dialog, as well as specific settings from each tab. 1st Security Agent allows you to import and export PC security settings, and offers a flexible and complete password protection. You'll find the program interface very easy to negotiate. Excellent online help is available.

See also:

- [About the program.](#)
- [How to use.](#)
- [How to spy on your PC users.](#)
- [How to copy restrictions between users in the tree.](#)
- [How to lock your personal computer with a password.](#)
- [How to Export/Import restrictions.](#)
- [How to register.](#)
- [Technical support.](#)

User interface

The main window is divided into several parts:

- **Main pull down menu** - All functions of the program can be performed from this menu.
- **Tool bar** - Tool bar is situated on top of the main window below the main menu. It duplicates only important functions of the main menu.
- **Popup menus** - Click the right mouse button to open a context popup menu. They are applicable to all main controls of the program.
- **Main tree of the program** - The tree is situated on the left side of the main window. This is a structured list of all available restriction groups. Use the gray keys "+" or "-" on the keyboard to expand or collapse the tree nodes. Use the splitter situated between the tree and the information panel to change the size of the tree.
- **Information panel** - This panel is situated on the right side of the main window. It displays information about current selected group or restriction and provides controls to change restrictions. It is divided into two separate subpanels and contains the splitter you can use to change subpanel sizes.
- **Status bar** - Status bar is situated at the bottom of the main window. It displays selected user, modification status, password status and the current tree item.

There are the following main commands you can perform:

- **Clear Tree** - Removes all restrictions from the tree. You need to apply restrictions after this command if you want to activate the clearance.
- **Apply Tree** - Applies any changes in the tree to the computer.
- **Import** - Imports restrictions from an external file (you should create such a file by the export feature).
- **Export** - Exports restrictions to an external file (you can then import the file by the import feature).
- **Password** - Use this command to password-protect 1st Security Agent. After defining the password only you can have access to the program and only you can change security restrictions. Also, it prevents uninstall feature. Only you can uninstall the program.
- **Statistics** - Use this command to spy on your PC users. After enabling user statistics you can then see when and what your users did on your PC while you were away. When you choose this command, the statistics viewer will appear on the screen. See the controls at the bottom of the window to enable statistics or to switch between users to see statistics for different users.
- **Find** - Use it or Ctrl+F key combination to find an option in the program. You can enter a list of words separated with spaces in the search box to limit your search. Use the F3 key to continue search.
- **Back** - Allows you to go uplevels of the main tree (return to previous levels).
- **Copy To** - Allows you to copy restrictions between users shown in the main tree. By selecting certain branches in the tree, you can copy only certain sets of restrictions between users.

See also:

- [How to use.](#)
- [How to spy on your PC users.](#)
- [How to copy restrictions between users in the tree.](#)
- [How to lock your personal computer with a password.](#)
- [How to Export/Import restrictions.](#)
- [About the program.](#)
- [Purpose of the program.](#)
- [How to register.](#)

How to register

This software is distributed as shareware. To keep the program on your personal computer you should register it.

- The first step is to obtain a registration code by paying a fee to us in the amount of \$49 or with some discounts depending on quantity of licenses(see information about the discounts on the Registration Form). You may buy the license(s) using Online Registration via Secure Server. If you do not wish to use Online Registration you may use the following alternatives: Telephone orders, Fax orders, Purchase Orders, or payment may be sent via postal mail or other delivery methods (See the order form).
- The second step is to enter your registration code in the program. Use the Help-Register item in the main menu to enter the code in the program. It is recommended using the Windows Clipboard to avoid any errors when entering the code.

Pricing:

1 license = \$49
2 licenses = \$85
5 licenses = \$195
10 licenses = \$280
15 licenses = \$350
20 licenses = \$420
25 licenses = \$480
30 licenses = \$510
40 licenses = \$550
50 licenses = \$590
60 licenses = \$630
70 licenses = \$670
80 licenses = \$690
90 licenses = \$720
100 licenses = \$750
150 licenses = \$770
200 licenses = \$800
Site license = \$950

Use the following link to register the program:

- Registration Form: <http://www.softheap.com/newadminpurchase.html>

See also:

- About the program.
- Purpose of the program.
- Technical support.

Compatibility

Please, note that this is absolutely normal if some of the restrictions do not work on your PC. Most of restrictions should work as advertised but some of them will not take effect after applying.

Compatibility of restrictions depends on the following:

- **Windows version** – Windows has not only the major version number but also the minor version (build version). In some builds Microsoft removes the features that you are going to restrict. The restrictions supporting the features become obsolete.
- **Service Packs and Fixes** – If you install service packs and fixes from Microsoft, you generally upgrade your Windows, receive new executable files and DLL files. In some upgrades, Microsoft removes the features that you are going to restrict. The restrictions supporting the features become obsolete.
- **Software Installations** – If you install Microsoft Office, Microsoft Explorer or their new versions, you generally upgrade your Windows as well. Microsoft may add hidden upgrade modules into this software. This will cause some executable files and DLLs to be upgraded silently. In some upgrades, Microsoft removes the features that you are going to restrict. The restrictions supporting the features become obsolete.
- **Third-party Software** – If you install third-party security software, registry cleaners, registry optimizers, you can get some of the restrictions to stop working. This may happen if the software writes its data to the same registry values (or delete the values) that are used for storing restrictions. Of course, this will cause some interference and the affected restriction will stop working.

Please, note that sometimes you need to upgrade your Windows, install the latest service packs and fixes to get the program or some of restrictions to work. For example, if you want to work with Windows 95, you have to upgrade it to the OSR2 release – the latest Windows 95 upgrade.

We guarantee that most of restrictions will work on your PC as advertised. We revise the restrictions when we release the new versions, remove the obsolete settings and add the new ones. Keep up-to-date and you will always have a good set of security options.

See also:

- [About the program.](#)
- [Purpose of the program.](#)
- [Technical support.](#)
- [How to register.](#)

Technical support

If you have got a problem, please, contact us by E-Mail. Please, inform us about the following:

- Windows version (including service packs and other fixes).
- Computer information (CPU Speed, Installed memory, Video adapter).
- Description of your problem (as much information as possible).

If the problem is an internal bug then it will be retrieved in the next release of the program in a month. If you have any comments or suggestions for the next releases, please do not hesitate to post them to us.

See also:

- About the program.
- Purpose of the program.
- How to register.

How to use

User interface of the program is similar to Windows Explorer. The main window consists of the Tree with the list of restriction groups and the Information panel with the list of restrictions and detailed information about the current selected restriction or restriction group. The right panel is divided into two parts: the top part is the list containing restrictions or groups of restrictions depending on the level where you are; the bottom part provides you with the descriptions of restrictions and may contain some additional controls to set up Restrictions.

- Use the key Tab on the keyboard to switch between the tree and the panel(s).
- Use the keys Up, Down, Left, Right on the keyboard to navigate the tree or the panel(s).
- Use the keys Gray Plus/Minus on the the keyboard to expand/collapse the groups of tree nodes.
- Use the top part of the right panel to navigate the restriction groups and to turn on/off Restrictions. Use the key Enter to open restriction groups and the key Space to turn on/off Restrictions.

When you choose a group of restrictions from the list of the Information panel, you see the detailed description of the group.

- Use the keys Up, Down, Left, Right on the keyboard to navigate the list.
- Use the key Enter on the keyboard to open a selected item in the list.
- Use the key Backspace to return to a previous level.

When you have chosen a single restriction in the tree, the Information panel at the right side of the main window will display detailed information about this option and provide controls to change it. Read the description and the notes before changing the selected restriction.

Use popup menus on the tree and on the panels by means of clicking the right mouse button over the tree, the list or a panel. You can also use the tool bar to perform the commands.

The program allows you to work with multiple users. In other words, you may change the level of access for any Windows user immediately within the program. You do not need to reboot the computer to change the current user. All users are shown in the tree. To create users use the item Users of the Control Panel.

The program allows you to save your restrictions to files so that you could return to your previous work when it is necessary, or place the same restrictions to any other PC.

- Use the item File-Clear Tree in the main menu to reset all restrictions in the tree.
- Use the item File-Apply Tree in the main menu to apply changes to the computer.
- Use the item File-Export in the main menu to save the current restrictions to a file.
- Use the item File-Import in the main menu to load restrictions from a file.

If you wish to restrict access to 1st Security Agent, you can lock it with a password.

- Use the item File-Password to set a password and restrict access to this program.
- Use the same menu item and clear the password if you wish to reset it.

See also:

- Restrictions.
- How to copy restrictions between users in the tree.
- How to Export/Import restrictions.
- How to lock your personal computer with a password.
- How to deny access to 1st Security Agent.
- User interface.
- How to spy on your PC users.
- About the program.
- Purpose of the program.
- How to register.

[How to lock your personal computer with a password](#)

By default Windows 9x does not require a valid user name and password combination for a user to create and use a local Windows machine. Such feature allows unknown user to penetrate to your computer when it is undesirable. This functionality can be change to require this validation or any additional password may be assigned for more security. These options are applicable to Windows 95/98/ME only.

For **Windows 95/98/ME**, use this option (click it):

- [Require User's Validation for Windows Access.](#)

For **Windows 95/98/ME/NT/2000/XP**, use these options (click them):

- [Always Check Password on Boot.](#)
- [Screen Lock, Common Options.](#)
- [Screen Lock, User Options.](#)

After setting up these options you need to reboot your computer for they to come into force.

For more security, you may disable booting from diskette in the system setup of your computer.

See also:

- [Restrictions.](#)
- [How to deny access to 1st Security Agent.](#)
- [How to use.](#)
- [How to spy on your PC users.](#)
- [How to copy restrictions between users in the tree.](#)
- [How to Export/Import restrictions.](#)
- [About the program.](#)
- [Purpose of the program.](#)
- [How to register.](#)
- [User interface.](#)

Require User's Validation for Windows Access

There is a flexible way in Windows 9x/ME to deny unauthorized access to a computer under multiuser environment. Especially, this method is very effective for personal computers connected to a network. All existing users will be able to access the computer except unknown users. Each user will use their own user name and password. Read carefully all instructions below to avoid dangerous situations such as locking yourself out of your PC.

There are several security options, which you should set up to restrict unknown users from being able to use your PC. These options are applicable to Windows 9x/ME only.

- Set up the option Disable Function Keys on Boot to disable all interruption keys such as "F5", "F6" and "F8". It will allow you to deny access to safe mode or to real DOS mode through Startup Menu. **If you try this protection first time, please, do not turn on this option until you successfully set it up. See important summary below.** The option is applicable to Windows 95/98/ME only
- Set up the option Allow Booting to the Previous Operating System to disable the ability of booting to the previous version of Windows or DOS. The option is applicable to Windows 95/98/ME only
- Set up the option Suppress Safe Mode Warning Message to disable access to the computer through safe mode. The option is applicable to Windows 95/98/ME only
- Set up the option Require User's Validation for Windows Access to require user's validation on boot. The option is applicable to Windows 95/98/ME only
- Use the item File-Password to lock 1st Security Agent with a password.

It is important

You need to create at least one user profile, and to define a password for it. Make sure that the Microsoft Family Logon is enabled in the network configuration, and is set as Primary Network Logon. To create a user profile, use the item Users in the Control Panel. To Install Microsoft Family Logon, use the item Network in the Control Panel.

How to install Microsoft Family Logon

To install Microsoft Family Logon, follow the instructions:

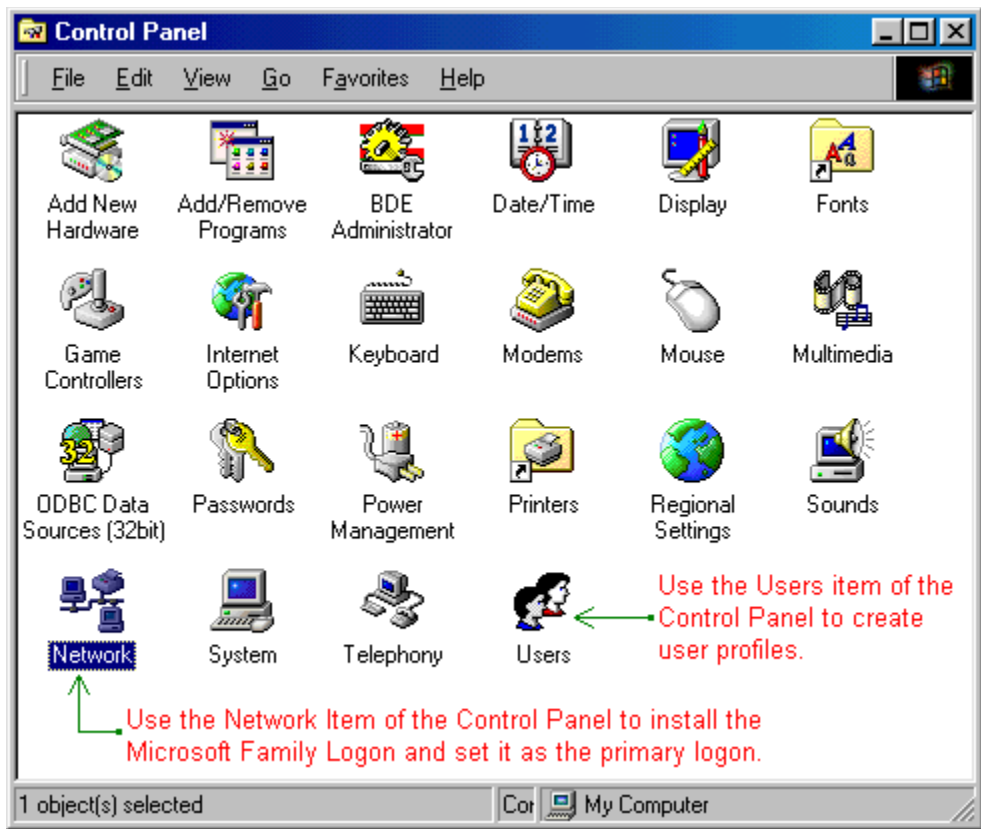
- Open the item Network in the Control Panel (Start->Settings->Control Panel->Network).
- Check the list of the installed network components. If you don't see the Microsoft Family Logon there then install it. See below.
- To install Microsoft Family Logon, press the button Add, choose the Client item in the dialog box, then press the button Add. Choose the item Microsoft in the list of Manufacturers and the item Microsoft Family Logon in the list of Network Clients, then press the Ok button.
- The last and a very important step is to set Microsoft Family Logon as Primary Network Logon. To do this, use the combo box Primary Network Logon, which is situated below the button Add in the Network item of the Control Panel (where you was installing Microsoft Family Logon).

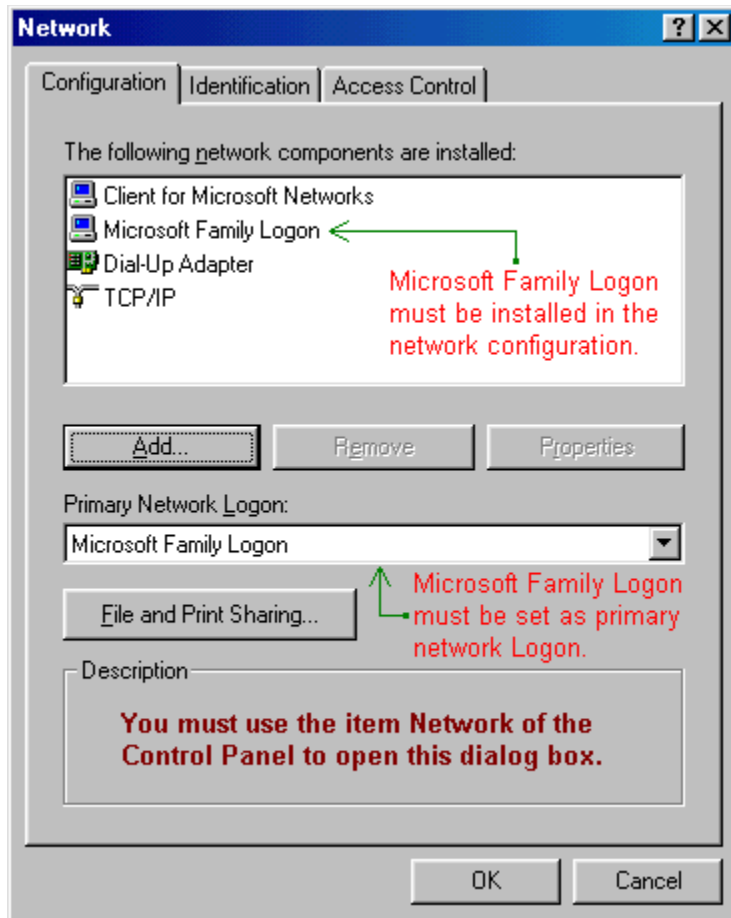
Important summary

Restriction Require User's Validation for Windows Access will always work properly if you use Microsoft Family Logon as Primary Network Logon. Be careful with this restriction, do not set up the option Disable Function Keys on Boot Up until this restriction works properly! If you can not access to your computer after setting up this protection then:

- Boot up your computer in safe mode by pressing F8 key while booting up.
- Start 1st Security Agent and remove this restriction.
- Reboot the computer in normal mode.

See the screen shots explaining the setup process





See also:

- [Restrictions.](#)
- [How to lock your personal computer with a password.](#)
- [How to deny access to 1st Security Agent.](#)
- [How to use.](#)
- [How to spy on your PC users.](#)
- [How to copy restrictions between users in the tree.](#)
- [How to Export/Import restrictions.](#)
- [About the program.](#)
- [Purpose of the program.](#)
- [How to register.](#)
- [User interface.](#)

[How to deny access to 1st Security Agent](#)

To deny access to 1st Security Agent, just set a password, which will be used by the program on each start.

- Use the item [File-Password](#) to set a password and restrict access to this program.
- Use the same menu item and clear the password if you wish to reset it.

See also:

- [Restrictions](#).
- [How to use](#).
- [How to spy on your PC users](#).
- [How to copy restrictions between users in the tree](#).
- [How to Export/Import restrictions](#).
- [How to lock your personal computer with a password](#).
- [About the program](#).
- [Purpose of the program](#).
- [How to register](#).
- [User interface](#).

Restrictions

There are two types of restrictions in the main tree. The first type of restrictions affects the whole computer. The second type of restrictions affects certain PC users. The types are divided into two separate groups, which you can see in the tree. After setting up restrictions, you need to reboot your PC to activate them.

Groups of restrictions:

- **Common Restrictions** – Restrictions, which affect the whole PC.
 - **Boot** – Boot Options.
 - **Automatic Logon** – Settings of Automatic Windows Logon.
 - **Screen Lock** – Common settings of the built-in multiuser screen-lock.
 - **Legal Notice** – Legal Notice, Windows Logon and Security Dialog Boxes.
 - **Network** – Network Security Restrictions.
 - **Explorer** – Windows Explorer and Desktop Restrictions.
 - **Internet** – Internet Security Restrictions.
 - **System** – System Options and Security Restrictions.
 - **Offline Files** – Offline Files Security Restrictions.
 - **Remote Access** – Remote Access and Dial-Up Networking Restrictions.
 - **Scripts** – Shutdown and Logon Scripts Security Restrictions.
 - **Software** – Miscellaneous Software Restrictions.
- **User Restrictions** – Restrictions, which affect certain users.
 - **Screen Lock** – User settings of the built-in multiuser screen-lock.
 - **MS-DOS** – MS-DOS and Windows 3.x Application Restrictions.
 - **Control Panel** – Control Panel Security Restrictions.
 - **Explorer** – Windows Explorer and Desktop Restrictions.
 - **Start Menu** – Start Menu Security Restrictions.
 - **Taskbar** – Taskbar and System Tray Security Restrictions.
 - **Dialog Boxes** – Common Dialog Boxes Security Restrictions.
 - **Active Desktop** – Active Desktop Security Restrictions.
 - **Internet** – Internet Security Restrictions.
 - **Browser Buttons** – Hiding Selected Internet Explorer Toolbar Buttons.
 - **Offline Pages** – Offline Pages Restrictions.
 - **Network** – Network and Workgroup Security Settings.
 - **System** – System Security Restrictions and Settings.
 - **Scripts** – Shutdown and Logon Scripts Security Restrictions.
 - **Special Icons** – Hiding special icons.
 - **Profile Quota** – User Profile Quota Restrictions.
 - **Custom Folders** – Customizing Shell Folders.
 - **Software** – Miscellaneous Software Restrictions.

See also:

- [How to use.](#)
- [How to spy on your PC users.](#)
- [How to copy restrictions between users in the tree.](#)
- [How to Export/Import restrictions.](#)
- [How to lock your personal computer with a password.](#)
- [How to deny access to 1st Security Agent.](#)
- [About the program.](#)
- [Purpose of the program.](#)
- [User interface.](#)

Boot Options

The following restrictions are available in this group:

- **Disable Function Keys on Boot Up** - By default Windows 9x enables the interruption keys on boot, these allow you to control the boot process. For example pressing F5 while the "Starting Windows..." message is displayed will boot Windows in Safe Mode. This option allows you to disable the F5, F6 and F8 keys. If you have turned on the restriction Require User's Validation for Windows Access and have not tested it yet, do not enable this restriction until you are sure it does work on your PC properly because it denies access to Safe Mode completely. Option affects the whole PC. Reboot your PC to activate or deactivate this option. [Applicable to Windows 95/98/ME.](#)
- **Disable the Auto Logon Shift Override Feature** - When using the automatic login feature it is possible for a user to hold the Shift key to bypass the login sequence and enter a username and password. This restriction disables the ability to override the function. Set up the rest "Boot" options to lock your computer more safely. Option affects the whole PC. Reboot your PC to activate or deactivate this option. [Applicable to Windows NT/2000/XP/2003.](#)
- **Allow Booting to the Previous Operating System** - If you installed an upgrade version of Windows 9x, you can normally press F4 to boot your previous version of Windows. This option can be disabled. Option affects the whole PC. Reboot your PC to activate or deactivate this option. [Applicable to Windows 95/98/ME.](#)
- **Suppress Safe Mode Warning Message** - Enabling the setting suppress the safe mode warning message when booting up, and bypasses the Startup menu. In most of cases it can give access to DOS mode if your PC was not properly shut down. We do recommend you to turn on this option if you secure PC entrance by the Require User's Validation for Windows Access option. If you have turned on the Require User's Validation for Windows Access restriction and have not tested it yet, do not enable this restriction until you are sure it does work on your PC properly because it restricts access to Safe Mode. Option affects the whole PC. Reboot your PC to activate or deactivate this option. [Applicable to Windows 95/98/ME.](#)
- **Require User's Validation for Windows Access** - By default Windows doesn't require a valid username and password combination for a user to create and use a local Windows machine. This functionality can be changed to require this validation. Using this option you can stop unauthorized access to your PC via Cancel button while logging in. If you turn on all boot options, only known users defined in Control Panel will have access to your PC using their own usernames and passwords. You need to create at least one user profile, and to define a password for it. Make sure that Microsoft Family Logon is enabled in the network configuration, and set as Primary Network Logon. Use the item Users of Control Panel to create user profiles. To install Microsoft Family Logon: Open the item Network of Control Panel and check the list of installed network components. If you do not see Microsoft Family Logon there, install it as follows: Press the button Add, choose the item Client in the dialog box, then press the button Add. Choose the item Microsoft from the list of Manufacturers and then the item Microsoft Family Logon from the list of Network Clients, then press the button Ok. The last and very important step is to set Microsoft Family Logon as Primary Network Logon. To do this, use the combo box Primary Network Logon, which is situated below the button Add in the item Network of Control Panel. See [How to setup this option correctly.](#) Option affects the whole PC. Reboot your PC to activate or deactivate this option. [Applicable to Windows 95/98/ME.](#)
- **Always Check Password on Boot** - Use this option to lock your personal computer with a password by starting Screen Lock on Boot. Screen Lock is an application you can use to lock your desktop while you are away (see the icon "1st Screen Lock" on the desktop of your PC). If you turn on this option, it will be impossible to get to your PC without knowing password. You can define the boot password in the folder Screen Lock of Common Restrictions or User Restrictions of the tree. [Applicable to Windows 95/98/ME/NT/2000/XP/2003.](#)
- **Stop Error Messages When Booting** - This option stops the Windows pop-up messages notifying you a device is not functioning when you boot-up Windows. Option affects the whole PC. Reboot your PC to activate or deactivate this option. [Applicable to Windows NT.](#)
- **Disable the Safe Mode** - This restriction will disable the Safe Mode. Applying this restriction will cause Windows to crash every time it is booted into the Safe Mode, this is normal. Option affects the whole PC. Reboot your PC to activate or deactivate this option. [Applicable to Windows](#)

[NT/2000/XP/2003.](#)

See also:

- [All restrictions.](#)
- [How to use.](#)
- [How to spy on your PC users.](#)
- [How to copy restrictions between users in the tree.](#)
- [How to Export/Import restrictions.](#)
- [How to lock your personal computer with a password.](#)
- [How to deny access to 1st Security Agent.](#)
- [About the program.](#)
- [Purpose of the program.](#)
- [User interface.](#)

[Automatic Logon](#)

The following restrictions are available in this group:

- **Force Automatic Logon** - This option turns the automatic logon on. You need to specify the other parameters such as Username, Password and Domain to make Windows to do automatic logon. Option affects the whole PC. If you turn off Windows XP fast user switching, it will be impossible to log off the user you selected. Reboot your PC to activate or deactivate this option. [Applicable to Windows NT/2000/XP/2003.](#)
- **Autologon Username** - Username that will be used while automatic logon. This option will always contain the last username, this is normal because after you turn the autologon on, Windows will always be using this username and will never change it to any other username. Option affects the whole PC. Reboot your PC to activate or deactivate this option. [Applicable to Windows NT/2000/XP/2003.](#)
- **Autologon Password** - Password that will be used while automatic logon. If your autologon user does not have a password, leave this option blank (do not turn it on). Option affects the whole PC. Reboot your PC to activate or deactivate this option. [Applicable to Windows NT/2000/XP/2003.](#)
- **Autologon Domain** - Domain that will be used while automatic logon. This option will always contain the last domain name, this is normal because after you turn the autologon on, Windows will always be using this domain name and will never change it to any other domain name. Option affects the whole PC. Reboot your PC to activate or deactivate this option. [Applicable to Windows NT/2000/XP/2003.](#)

See also:

- [All restrictions.](#)
- [How to use.](#)
- [How to spy on your PC users.](#)
- [How to copy restrictions between users in the tree.](#)
- [How to Export/Import restrictions.](#)
- [How to lock your personal computer with a password.](#)
- [How to deny access to 1st Security Agent.](#)
- [About the program.](#)
- [Purpose of the program.](#)
- [User interface.](#)

[Screen Lock, Common Options](#)

The following restrictions are available in this group:

- **Screen-lock Password** - If enabled, the password will be applied to all PC users, so all your users will use this password to get through the built-in screen-lock every time desktop is locked with the built-in screen-lock. If you want to use different passwords for different PC users, set up individual passwords for each user listed in the tree (see the folders "Screen Lock" for each user shown in the tree). Screen Lock is an application you can use to lock your desktop while you are away (see the icon "1st Screen Lock" on the desktop of your PC). Option affects the whole PC. [Applicable to Windows 95/98/ME/NT/2000/XP/2003.](#)
- **Screen-lock Background Image** - You can select an image here, which will be used as a background in the built-in screen-lock. You can change the picture as many times as you want. To disable the background picture (make the screen-lock on the black screen), uncheck the checkbox. The image will be applied to all PC users, so all your users will see the same background picture in the built-in screen-lock. If you want to use different images for different PC users, set up individual images for each user listed in the tree (see the folders "Screen Lock" for each user shown in the tree). Option affects the whole PC. [Applicable to Windows 95/98/ME/NT/2000/XP/2003.](#)

See also:

- [All restrictions.](#)
- [How to use.](#)
- [How to spy on your PC users.](#)
- [How to copy restrictions between users in the tree.](#)
- [How to Export/Import restrictions.](#)
- [How to lock your personal computer with a password.](#)
- [How to deny access to 1st Security Agent.](#)
- [About the program.](#)
- [Purpose of the program.](#)
- [User interface.](#)

[Legal Notice Dialog Box](#)

The following options are available in this group:

- **Caption of the Legal Notice Dialog Box** - This option along with the "Text of the Legal Notice Dialog Box" lets you create a dialog box that will be presented to any user before logging onto the system. This is useful where you are required by law to warn people that it is illegal to attempt to logon without being an authorized user. You must define both Caption and Text of the dialog box to make Windows to show it on the screen. Option affects the whole PC. [Applicable to Windows NT/2000/XP/2003.](#)
- **Caption of the Legal Notice Dialog Box** - This option along with the "Text of the Legal Notice Dialog Box" lets you create a dialog box that will be presented to any user before logging onto the system. This is useful where you are required by law to warn people that it is illegal to attempt to logon without being an authorized user. You must define both Caption and Text of the dialog box to make Windows to show it on the screen. Option affects the whole PC. [Applicable to Windows 95/98/ME.](#)
- **Text of the Legal Notice Dialog Box** - This option along with the "Caption of the Legal Notice Dialog Box" lets you create a dialog box that will be presented to any user before logging onto the system. This is useful where you are required by law to warn people that it is illegal to attempt to logon without being an authorized user. You must define both Caption and Text of the dialog box to make Windows to show it on the screen. Option affects the whole PC. [Applicable to Windows NT/2000/XP/2003.](#)
- **Text of the Legal Notice Dialog Box** - This option along with the "Caption of the Legal Notice Dialog Box" lets you create a dialog box that will be presented to any user before logging onto the system. This is useful where you are required by law to warn people that it is illegal to attempt to logon without being an authorized user. You must define both Caption and Text of the dialog box to make Windows to show it on the screen. Option affects the whole PC. [Applicable to Windows 95/98/ME.](#)
- **Caption of Windows Logon and Security Dialog** - This setting allows you to add additional text to the title of the standard Windows Logon and Windows Security dialog boxes. Option affects the whole PC. Reboot your PC to activate or deactivate this option. [Applicable to Windows NT/2000/XP.](#)
- **Prompt Shown on the Logon Box** - You can personalize (or legalize) the message displayed on the logon box above the user name and password. Option affects the whole PC. Reboot your PC to activate or deactivate this option. [Applicable to Windows NT/2000/XP/2003.](#)

See also:

- [All restrictions.](#)
- [How to use.](#)
- [How to spy on your PC users.](#)
- [How to copy restrictions between users in the tree.](#)
- [How to Export/Import restrictions.](#)
- [How to lock your personal computer with a password.](#)
- [How to deny access to 1st Security Agent.](#)
- [About the program.](#)
- [Purpose of the program.](#)
- [User interface.](#)

Network Security Restrictions

The following restrictions are available in this group:

- **Hide User Accounts from the Logon Screen** - This option can be used to hide specific user accounts from the logon screen, without removing them completely. Selected accounts will also be hidden from the User Accounts of the Control Panel. Option affects the whole PC. Reboot your PC to activate or deactivate this option. [Applicable to Windows XP.](#)
- **Hide Options on Logon Dialog Box** - This setting controls whether the options to enter a domain or to log on using a dial-up connection are shown on the Windows logon box. Option affects the whole PC. Reboot your PC to activate or deactivate this option. [Applicable to Windows NT/2000/XP/2003.](#)
- **Disable Shutdown from Authentication Dialog Box** - When this setting is enabled a [Shutdown] button is not displayed in authentication dialog box when the system first starts. This does not allow you to shutdown a system without logging in. Option affects the whole PC. Reboot your PC to activate or deactivate this option. [Applicable to Windows NT/2000/XP/2003.](#)
- **Require Users to Press Ctrl+Alt+Delete Before Logon** - This setting controls whether users are required to press Ctrl + Alt + Delete as a security precaution before logging into the system. Option affects the whole PC. Reboot your PC to activate or deactivate this option. [Applicable to Windows 2000/XP.](#)
- **Disable Multiple User Sessions and Fast User Switching** - By default, Windows XP and higher gives you an ability to switch between users without logging off that keeps all active users on your PC with all started processes and programs. On a heavy used system this can be both a security threat and performance drop. This option disables multiple user sessions and fast user switching on your PC. Option affects the whole PC. Reboot your PC to activate or deactivate this option. [Applicable to Windows XP.](#)
- **Force Using Classic Login Window** - This setting forces using classic type of logon screen, and disables the Windows Welcome screen. Option affects the whole PC. Reboot your PC to activate or deactivate this option. [Applicable to Windows XP.](#)
- **Remove the Hand Icon for Shared Resources** - Normally when you share a local resource on the network a hand icon is placed under the item to show it is shared. With this tweak you can remove the icon. Option affects the whole PC. Reboot your PC to activate or deactivate this option. [Applicable to Windows 95/98/ME/NT/2000/XP/2003.](#)
- **Disable Automatic Windows Updates** - This option disables automatic Windows update feature. Option affects the whole PC. Reboot your PC to activate or deactivate this option. [Applicable to Windows 2000/XP/2003.](#)
- **Don't Display Last User Name** - Enabling this key will blank the username box on the logon screen. Preventing people that are logging on from knowing the last user on the system. Option affects the whole PC. Reboot your PC to activate or deactivate this option. [Applicable to Windows NT/2000/XP/2003.](#)
- **Don't Display Last User Name** - Enabling this key will blank the username box on the logon screen. Preventing people that are logging on from knowing the last user on the system. Option affects the whole PC. Reboot your PC to activate or deactivate this option. [Applicable to Windows 95/98/ME.](#)
- **Use Active Authentication for Unlock and Screen Saver** - This setting controls whether a full login should be performed when a workstation is unlocked or a password is used with the screen saver. Normally Windows will not check some settings such as whether the account has been locked out. Option affects the whole PC. Reboot your PC to activate or deactivate this option. [Applicable to Windows NT/2000/XP/2003.](#)
- **Disable Network Messenger Service** - Normally, the Messenger service is used to transmit net send and Alerter service messages between hosts on a network. Recently it has been employed by spammers for sending unsolicited advertising popups (SPAM) over the Internet. Use this option to disable this service. Option affects the whole PC. Reboot your PC to activate or deactivate this option. [Applicable to Windows NT/2000/XP/2003.](#)
- **Disable File and Printer Sharing** - When file and printer sharing is installed it allows users to make services available to other users on a network, this functionality can be disabled by changing this setting. Option affects the whole PC. Reboot your PC to activate or deactivate this option. [Applicable to Windows 95/98/ME.](#)

- **Securing Network Access to CD-ROM Drives** - This setting determines whether data in the CD-ROM drive is accessible to other users. This value entry satisfies, in part, the C2 security requirement that you must be able to secure removable media. Because the CD-ROM drive is a volume, by default, it is shared as an administrative share on the network. If the option is on, the CD-ROM drive is allocated to the user as part of the interactive logon process and, therefore, only the current user can access it. This prevents administrators and remote users (and even the same user at a different workstation) from accessing the drive while the current user is logged on to the computer. The drive is shared again when the current user logs off the computer. Option affects the whole PC. Reboot your PC to activate or deactivate this option. [Applicable to Windows NT/2000/XP/2003.](#)
- **Securing Network Access to Floppy Drives** - This setting determines whether data in the floppy disk drive is accessible to other users. This value entry satisfies, in part, the C2 security requirement that you must be able to secure removable media. Because the floppy disk drive is a volume, by default it is shared as an administrative share on the network. If the option is on, the floppy disk drive is allocated to the user as part of the interactive logon process and, therefore, only the current user can access it. This prevents administrators and remote users (and even the same user at a different workstation) from accessing the drive while the current user is logged on. The drive is shared again when the current user logs off. Option affects the whole PC. Reboot your PC to activate or deactivate this option. [Applicable to Windows NT/2000/XP/2003.](#)
- **Secure Access to Removable Drives** - This setting determines whether data in the direct access storage device (DASD) is accessible to other users. This value entry satisfies, in part, the C2 security requirement that you must be able to secure removable media. Because the DASD is a volume, by default it is shared as an administrative share on the network. If the option is on, the DASD is allocated to the user as part of the interactive logon process and, therefore, only the current user can access it. This prevents administrators and remote users (and even the same user at a different workstation) from accessing the DASD while the current user is logged on. The DASD is shared again when the current user logs off. Option affects the whole PC. Reboot your PC to activate or deactivate this option. [Applicable to Windows NT/2000/XP/2003.](#)
- **Hiding Servers from the Browser List** - If you have a secure server or workstation you wish to hide from the general browser list, turn on this restriction. Option affects the whole PC. Reboot your PC to activate or deactivate this option. [Applicable to Windows NT/2000/XP/2003.](#)
- **Disable Password Caching** - Normally Windows caches a copy of the users password on the local system to allow for additional automation, this leads to a possible security threat on some systems. Disabling caching means the users passwords are not cached locally. This setting also removes the second Windows password screen and also remove the possibility of networks passwords to get out of sync. Option affects the whole PC. Reboot your PC to activate or deactivate this option. [Applicable to Windows 95/98/ME/NT/2000/XP/2003.](#)
- **Disable Caching of Domain Password** - Enabling this setting disables the caching of the domain passwords, and therefore passwords are required to be re-entered to access any additional domain resources. Option affects the whole PC. Reboot your PC to activate or deactivate this option. [Applicable to Windows 95/98/ME.](#)
- **Require Alphanumeric Windows Password** - Windows by default will accept anything as a password, including nothing. This setting controls whether Windows will require a alphanumeric password, i.e. a password made from a combination of alpha (A, B, C...) and numeric (1, 2 ,3 ...) characters. Option affects the whole PC. Reboot your PC to activate or deactivate this option. [Applicable to Windows 95/98/ME/NT/2000/XP/2003.](#)
- **Hide Share Passwords with Asterisks** - This setting controls whether the password typed when accessing a file share is shown in clear text or as asterisks. Option affects the whole PC. Reboot your PC to activate or deactivate this option. [Applicable to Windows 95/98/ME/NT/2000/XP/2003.](#)
- **Disable Automatic Hidden Shares** - When networking has been installed on a Windows NT-based machine, it will automatically create hidden shares to the local disk drives. The shares are normally accessed via `\server\c$` and `\server\d$` depending on the drive letter. It is possible to disable the sharing at run-time, but this tweak will stop the automatic sharing altogether. Option affects the whole PC. Reboot your PC to activate or deactivate this option. [Applicable to Windows NT/2000/XP/2003.](#)
- **Disable the Ability to Remotely Shutdown the Computer Browser Service** - It is possible for a malicious user to shut down a computer browser, or all computer browsers, on the same subnet. If all of the computers on the same subnet are shut down, they can then declare their own computer the

new master browser. Option affects the whole PC. Reboot your PC to activate or deactivate this option. [Applicable to Windows NT/2000/XP/2003.](#)

- **Restricting Information Available to Anonymous Logon Users** - Windows NT has a feature where anonymous logon users can list domain user names and enumerate share names. Customers who want enhanced security have requested the ability to optionally restrict this functionality. Option affects the whole PC. Reboot your PC to activate or deactivate this option. [Applicable to Windows NT/2000/XP/2003.](#)
- **Disable Credentials and .NET Passwords Saving** - This setting lets you disable saving of authentication credentials and .NET passwords on the local system. By turning this feature on, passwords will not be saved anymore. Option affects the whole PC. Reboot your PC to activate or deactivate this option. [Applicable to Windows XP/2003.](#)
- **Disable Web Printing** - This restriction enables and disables server support for Internet printing. Internet printing lets you display printers on Web pages so they can be viewed, managed, and used across the Internet or an intranet. Option affects the whole PC. Reboot your PC to activate or deactivate this option. [Applicable to Windows 2000/XP/2003.](#)
- **Disable the Printer Server Browse Thread** - If you use this option, the print spooler does not send shared printer information to other print servers. Option affects the whole PC. Reboot your PC to activate or deactivate this option. [Applicable to Windows NT/2000/XP/2003.](#)
- **Force Users to Use Dial-Up Networking to Logon** - There is a checkbox on the NT logon screen that allows you to dial into your logon server for authentication of user accounts. This restriction lets you force your users to use this type of authentication by turning on this checkbox by default and disabling it. Option affects the whole PC. Reboot your PC to activate or deactivate this option. [Applicable to Windows NT/2000.](#)
- **Disable Automatic Modem Connections at Startup** - If modem remote connections are enabled, Windows usually initiates an Internet connection at Windows startup or when you start some applications. This restriction disables such behaviour. Option affects the whole PC. Reboot your PC to activate or deactivate this option. [Applicable to Windows 95/98/ME/NT/2000/XP/2003.](#)

See also:

- [All restrictions.](#)
- [How to use.](#)
- [How to spy on your PC users.](#)
- [How to copy restrictions between users in the tree.](#)
- [How to Export/Import restrictions.](#)
- [How to lock your personal computer with a password.](#)
- [How to deny access to 1st Security Agent.](#)
- [About the program.](#)
- [Purpose of the program.](#)
- [User interface.](#)

Windows Explorer and Desktop Restrictions

The following restrictions are available in this group:

- **Disable Selected Keys on the Keyboard** - This restriction disables selected keys on the keyboard. By disabling Ctrl or Alt keys you can disable the Ctrl+Alt+Del (CAD) system key combination. If you are running a kiosk PC you should disable all system keys to secure your PC as much as possible. Note that you disable the whole physical keys, not key characters. For example, if you disable the comma key, the colon character located on this key will be disabled too. Everything looks like you physically remove selected keys from your keyboard. Option affects the whole PC. Reboot your PC to activate or deactivate this option. [Applicable to Windows NT/2000/XP/2003.](#)
- **Remove Programs from the Add/Remove Programs List** - This restriction lets you remove selected programs from the Add/Remove Program List of the Control Panel. This option will not remove programs installed with Microsoft Installer (MSI). To remove programs installed with MSI use the next restriction "Remove MSI Programs from the Add/Remove Programs List". This option also may not remove programs installed by some users. To remove those programs from user's Add/Remove Program List, use the same option in the User Restrictions. Check required programs to hide them. Option affects the whole PC. [Applicable to Windows 95/98/ME/NT/2000/XP/2003.](#)
- **Remove MSI Programs from the Add/Remove Programs List** - This restriction will remove selected MSI programs from the Add/Remove Program List of the Control Panel. This option removes only programs installed with Microsoft Installer (MSI). To remove all other programs use the previous restriction "Remove Programs from the Add/Remove Programs List". Check required programs to hide them. Option affects the whole PC. [Applicable to Windows 95/98/ME/NT/2000/XP/2003.](#)
- **Disable the New Menu Item** - This option can be used to disable the ability to use the New menu item to create new objects using explorer. Option affects the whole PC. Reboot your PC to activate or deactivate this option. [Applicable to Windows 95/98.](#)
- **Disable Main Menu Bars and the Start Button** - This restriction can be used to disable the Start Button and the main menu bar in standard Windows applications such as Windows Explorer, Internet Explorer, etc. Option affects the whole PC. On the Windows XP style Start Menu, this option disables the All Programs button only. Switch to the classic menu style to disable the Start Button. Reboot your PC to activate or deactivate this option. [Applicable to Windows ME/2000/XP/2003.](#)
- **Remove Items from Start Button Context Menu** - Usually when a user right clicks on the start button he can select Open, Explore or Find commands. Use this restriction to remove these commands and secure your desktop. This option disables the commands Open and Explore for all folders as well. Option affects the whole PC. This option usually removes the whole top part of the menu. On some Windows versions it removes the whole menu. Reboot your PC to activate or deactivate this option. [Applicable to Windows 95/98/ME/NT/2000/XP/2003.](#)
- **Delete the Shared Documents Folders from My Computer** - An addition to Windows XP and higher is the Shared Documents folders. Folders or files you wish to share with others on the network can be placed here using drag and drop. Moving or copying a file or folder to Shared Documents makes it available to everyone who uses your computer. Use this option to delete the Shared Documents folders from My Computer. This restriction will also delete the Files Stored on This Computer section from My Computer. Option affects the whole PC. Reboot your PC to activate or deactivate this option. [Applicable to Windows XP.](#)
- **Hide "Send to" Context Menu** - This setting allows you to control whether the "Send to" context menu is displayed when a file or directory object is right-clicked in Explorer. Option affects the whole PC. Reboot your PC to activate or deactivate this option. [Applicable to Windows 95/98/ME/2000/XP/2003.](#)
- **Disable "Open With Program" Feature** - This setting allows you to disable "Open With Program" dialog box that appears on the screen when an unknown file type is opened. Option affects the whole PC. [Applicable to Windows 95/98/ME/NT/2000/XP/2003.](#)
- **Disable the Use of the Recycle Bin** - This setting is used to disable the use of the recycle bin and permanently remove all deleted items instead. This enables the same functionality as holding the Shift key while deleting items. Option affects the whole PC. Reboot your PC to activate or deactivate this option. [Applicable to Windows ME/2000/XP/2003.](#)
- **Hide the Welcome Screen** - This setting hides the welcome screen that is normally displayed each

time the user logs on to Windows. Welcome screen is available on some Windows versions starting from Windows 2000 Professional. Option affects the whole PC. Reboot your PC to activate or deactivate this option. [Applicable to Windows 2000/XP/2003.](#)

- **Remove Suspend item from the Start Menu** - This option lets you remove the Suspend item from the Start menu. Option affects the whole PC. Reboot your PC to activate or deactivate this option. [Applicable to Windows 95/98/ME.](#)
- **Remove the Pin to the Start Menu Item from Explorer's Context Menu** - When you right click a file while holding shift in Windows Explorer you will have an option to Pin the file to the Start menu. By using this restriction you can remove this menu item. Option affects the whole PC. Reboot your PC to activate or deactivate this option. [Applicable to Windows XP/2003.](#)
- **Remove the Open With Item from Explorer's Context Menu** - When you right click a file in Windows Explorer you will have the Open With option you can use to open a file with a specific program. By using this restriction you can remove this menu item. Option affects the whole PC. Reboot your PC to activate or deactivate this option. [Applicable to Windows XP/2003.](#)
- **Do not Automatically Encrypt Files Moved to Encrypted Folders** - This restriction lets you disable automatic encryption of files moved to encrypted folders. Option affects the whole PC. Reboot your PC to activate or deactivate this option. [Applicable to Windows 2000/XP/2003.](#)
- **Disable the Run As feature in Windows** - This restriction disables the Run As feature in Windows. The Run As feature allows a user with multiple accounts to provide alternative credentials and to run a program as a different user. For example, you can use the Run As feature to start a program as an administrator if you want to perform administrative tasks when you are logged on as a member of another group, such as the Users or the Power Users group. To use the Run As feature on a Windows Server 2003-based or a Windows XP-based computer, hold the SHIFT key down and right-click a program, MMC console, or Control Panel tool, and then type the credentials of a user other than the user who is currently logged on. Option affects the whole PC. Reboot your PC to activate or deactivate this option. [Applicable to Windows XP/2003.](#)
- **Remove Shortcut Arrows** - After applying this restriction, Windows will display your shortcuts without the arrow in the bottom left hand corner. Option affects the whole PC. Reboot your PC to activate or deactivate this option. [Applicable to Windows 95/98/ME/NT/2000/XP/2003.](#)

See also:

- [All restrictions.](#)
- [How to use.](#)
- [How to spy on your PC users.](#)
- [How to copy restrictions between users in the tree.](#)
- [How to Export/Import restrictions.](#)
- [How to lock your personal computer with a password.](#)
- [How to deny access to 1st Security Agent.](#)
- [About the program.](#)
- [Purpose of the program.](#)
- [User interface.](#)

Internet Security Restrictions

The following restrictions are available in this group:

- **Remove Browser Extensions from Internet Explorer** - This restriction will remove all extensions from the toolbar and from the Tools menu of Internet Explorer such as Show Related Links and Windows Messenger. Note that you can remove or disable the other items under the Tools menu using the Internet restriction group of User Restrictions. This restriction is very useful when you set up an Internet Kiosk. Option affects the whole PC. Reboot your PC to activate or deactivate this option. [Applicable to Windows 95/98/ME/NT/2000/XP/2003.](#)
- **Disable Content Advisor in Internet Explorer** - This restriction lets you disable Content Advisor in Internet Explorer. Option affects the whole PC. Reboot your PC to activate or deactivate this option. [Applicable to Windows 95/98/ME/NT/2000/XP/2003.](#)
- **Disable Macromedia Flash Player** - This restriction will disable Macromedia Flash player. Option affects the whole PC. Reboot your PC to activate or deactivate this option. [Applicable to Windows 95/98/ME/NT/2000/XP/2003.](#)

See also:

- [All restrictions.](#)
- [How to use.](#)
- [How to spy on your PC users.](#)
- [How to copy restrictions between users in the tree.](#)
- [How to Export/Import restrictions.](#)
- [How to lock your personal computer with a password.](#)
- [How to deny access to 1st Security Agent.](#)
- [About the program.](#)
- [Purpose of the program.](#)
- [User interface.](#)

System Options and Security Restrictions

The following restrictions are available in this group:

- **Disable System Policy Updates Via Network** - By default, Windows establishes a connection to the NetLogon share of the validating domain controller and checks for existence of the policy file. If the file exists or is changed, it will be downloaded and applied to the PC. In such a way system policies are applied to a Windows machine when on a network. This restriction lets you disable such updates. Note that when you use this program, you have to turn this restriction on otherwise the restrictions you set by the program will be overwritten with the options from the domain controller on each policy update. Option affects the whole PC. Reboot your PC to activate or deactivate this option. [Applicable to Windows NT/2000/XP/2003.](#)
- **Disable Task Scheduler** - Task Scheduler is automatically installed in some versions of Windows, and also when you install Internet Explorer. This restriction will disable it in your system. Option affects the whole PC. Reboot your PC to activate or deactivate this option. [Applicable to Windows 95/98/ME.](#)
- **Disable the NTFS Last Access Time Stamp** - When Windows accesses a directory on an NTFS volume, it updates the LastAccess time stamp on each directory it detects. Therefore, if there are a large number of directories, this can affect performance. Option affects the whole PC. Reboot your PC to activate or deactivate this option. [Applicable to Windows NT/2000/XP/2003.](#)
- **Automatically Reboot Windows After a Crash** - This parameter controls whether Windows should automatically reboot after a system failure or if the blue crash screen should be displayed. Option affects the whole PC. Reboot your PC to activate or deactivate this option. [Applicable to Windows NT/2000/XP/2003.](#)
- **Restricting Access to the Event Logs** - The Windows NT event log contains records documenting application, security and system events taking place on the machine. These logs can contain sensitive data, and by default, the Guest account has access to view them. This tweak allows you to restrict access to administrators and system accounts. Option affects the whole PC. Reboot your PC to activate or deactivate this option. [Applicable to Windows NT/2000/XP/2003.](#)
- **Restrict Access to Base System Objects** - In Windows NT-based systems the core operating system DLLs are kept in virtual memory and shared between the programs running on the system. This has exposed a vulnerability that could allow a user to gain administrative privileges on the computer the user is interactively logged onto. Option affects the whole PC. Reboot your PC to activate or deactivate this option. [Applicable to Windows NT/2000/XP/2003.](#)
- **Clear the Page File at System Shutdown** - Windows normally does not clear or recreate the page file. On a heavy used system this can be both a security threat and performance drop. Enabling this setting will cause Windows to clear the page file whenever the system is shutdown. Option affects the whole PC. Reboot your PC to activate or deactivate this option. [Applicable to Windows NT/2000/XP/2003.](#)
- **Disable the Automatic Restarting of the Shell** - By default if the Windows user interface or one of its components fails, the interface is restarted automatically, this can be changed so that you must restart the interface by logging off and logging on again manually. Option affects the whole PC. Reboot your PC to activate or deactivate this option. [Applicable to Windows NT/2000/XP/2003.](#)
- **Enable Advanced File System and Sharing Security** - This setting is used to enable the ability to control advanced NTFS permissions on local and shared files. This restriction is only available for Windows XP Professional Edition and higher. Option affects the whole PC. Reboot your PC to activate or deactivate this option. [Applicable to Windows XP/2003.](#)
- **Secure Desktop Restriction** - This restriction is used to stop interactive users from snooping on other user sessions by exploiting a Windows vulnerability. This feature is enabled by default but may interfere with some software applications. Option affects the whole PC. Reboot your PC to activate or deactivate this option. [Applicable to Windows 2000/XP/2003.](#)
- **Disable Windows Installer** - This restriction allows you to prevent users from adding and removing software applications with Windows Installer. Option affects the whole PC. Reboot your PC to activate or deactivate this option. [Applicable to Windows 95/98/ME/NT/2000/XP/2003.](#)
- **Disable Remote Administration of Windows Installer** - Remote administration of Windows Installer allows administrators using Windows Terminal Services to remotely install and configure software

using Windows Installer. This restriction lets you disable it. Option affects the whole PC. Reboot your PC to activate or deactivate this option. [Applicable to Windows 2000/XP/2003.](#)

- **Restrict Interactive Services** - Windows services normally have the option of interacting with the desktop, to display information and accept input. Due to security reasons it is recommended to restrict service interactivity by using this option. Option affects the whole PC. Reboot your PC to activate or deactivate this option. [Applicable to Windows 2000/XP/2003.](#)
- **Disable Group Policy Objects** - This setting is used to disable the use of group policy objects on the local computer. Option affects the whole PC. Reboot your PC to activate or deactivate this option. [Applicable to Windows 2000/XP/2003.](#)
- **Disable Creation of Last Known Good Configuration** - This setting allows you to disable the creation of the Last Known Good configuration, which stores a copy of the configuration after each successful boot-up. Option affects the whole PC. Reboot your PC to activate or deactivate this option. [Applicable to Windows NT/2000/XP/2003.](#)
- **Disable Paging Executive** - On systems with large amount of RAM this tweak can be enabled to force the core Windows system to be kept in memory and not paged to disk. Option affects the whole PC. Reboot your PC to activate or deactivate this option. [Applicable to Windows NT/2000/XP/2003.](#)
- **Disable System Restore Settings** - System Restore allows users to revert Windows settings and configuration changes to an earlier point in time (called Restore Points). This tweak can be used to restrict user access to the System Restore settings. Option affects the whole PC. Reboot your PC to activate or deactivate this option. [Applicable to Windows XP.](#)
- **Disable System Restore Tools** - System Restore allows users to revert Windows settings and configuration changes to an earlier point in time (called Restore Points). This tweak can be used to restrict user access to the System Restore tools. Option affects the whole PC. Reboot your PC to activate or deactivate this option. [Applicable to Windows XP.](#)
- **Disable Automatic Registry Imports of REG Files** - By default if you double-click on a REG file, the file will be imported into the system registry automatically. This option lets you force Windows to open all REG files in default text editor and disable automatic imports of REG files. Option affects the whole PC. Reboot your PC to activate or deactivate this option. [Applicable to Windows 95/98/ME/NT/2000/XP/2003.](#)
- **Disable Automatic Daylight Savings Adjustments** - Windows normally attempts to automatically adjust the system clock for daylight saving changes based on the computer timezone. This option lets you disable the automatic time adjustments. Option affects the whole PC. Reboot your PC to activate or deactivate this option. [Applicable to Windows NT/2000/XP/2003.](#)
- **Disable Windows Error Reporting Function** - When an error occurs, Windows tries to send debugging information to Microsoft for analysis. This restriction will disable it. Option affects the whole PC. Reboot your PC to activate or deactivate this option. [Applicable to Windows XP/2003.](#)
- **Disable Displaying Popup Error Messages** - This option disables popup error messages such as application and system error messages. Option affects the whole PC. Reboot your PC to activate or deactivate this option. [Applicable to Windows NT/2000/XP/2003.](#)
- **Disable Universal Plug and Play Services** - Universal Plug and Play (UnPnP) is intended for connecting UnPnP devices over a network. There are currently a limited number of UnPnP devices available while due to a recent security flaw it may be advisable to disable the services. Option affects the whole PC. Reboot your PC to activate or deactivate this option. [Applicable to Windows XP/2003.](#)
- **Disable IMAPI CD-Burning Service** - This restriction will disable the IMAPI CD-burning service. Option affects the whole PC. Reboot your PC to activate or deactivate this option. [Applicable to Windows XP/2003.](#)
- **Disable Remote Assistance in Windows** - The Remote Assistance feature lets administrators to connect to a computer and control it by using its mouse and keyboard and viewing its screen remotely. This restriction disables such ability. Option affects the whole PC. Reboot your PC to activate or deactivate this option. [Applicable to Windows XP/2003.](#)
- **Disable Error Reporting in Internet Explorer** - This restriction lets you disable the error reporting tool in Internet Explorer 6.0 and higher that reports browser debugging errors to the Microsoft team. It will certainly increase security of your system if it is used as a public access PC. Option affects the whole PC. Reboot your PC to activate or deactivate this option. [Applicable to Windows 95/98/ME/NT/2000/XP/2003.](#)
- **Disable Dr Watson Alerts and PopUp Messages** - This restriction disables displaying message

boxes and popup windows when Dr. Watson utility encounters application errors. Option affects the whole PC. Reboot your PC to activate or deactivate this option. [Applicable to Windows NT/2000/XP/2003.](#)

- **Disable Prefetch Feature in Windows** - Prefetch is one of the commonly overlooked components that can have a significant impact on system boot time. This restriction allows you to disable the prefetch feature to facilitate booting. Option affects the whole PC. Reboot your PC to activate or deactivate this option. [Applicable to Windows 2000/XP/2003.](#)
- **Disable Automatic Boot Disk Optimization** - This restriction will disable the automatic boot disk optimization (Defrag) to increase reliability of your system. Option affects the whole PC. Reboot your PC to activate or deactivate this option. [Applicable to Windows 2000/XP/2003.](#)
- **Disable the File Association Web Service** - This restriction lets you disable the Internet Open With feature in Windows (File Association Web Service). Option affects the whole PC. Reboot your PC to activate or deactivate this option. [Applicable to Windows XP/2003.](#)

See also:

- [All restrictions.](#)
- [How to use.](#)
- [How to spy on your PC users.](#)
- [How to copy restrictions between users in the tree.](#)
- [How to Export/Import restrictions.](#)
- [How to lock your personal computer with a password.](#)
- [How to deny access to 1st Security Agent.](#)
- [About the program.](#)
- [Purpose of the program.](#)
- [User interface.](#)

Offline Files Security Restrictions

The following restrictions are available in this group:

- **Disable Changing the Enable Offline Files Option** - This restriction lets you prevent users from changing the Enable Offline Files option in Offline Files Option affects the whole PC. Reboot your PC to activate or deactivate this option. [Applicable to Windows 2000/XP/2003.](#)
- **Disable Changing Action on Connection Loss** - When enabled, this restriction will prevent users from changing the When a Network Connection is Lost option in the Advanced Settings of Offline Files options. Option affects the whole PC. Reboot your PC to activate or deactivate this option. [Applicable to Windows 2000/XP/2003.](#)
- **Prevent Use of Offline Files Folder** - The Offline Files folder contains network files stored on the local computer for offline use. Users can use the Offline Files folder to view or open copies of network files and to view properties of offline files, such as their server status, type, and location. This restriction lets you remove the Offline Files folder. Option affects the whole PC. Reboot your PC to activate or deactivate this option. [Applicable to Windows 2000/XP/2003.](#)
- **Disable User Configuration of Offline Files** - When this restriction is enabled, the system removes the Offline Files tab from the Folder Options dialog box. It also removes the Settings item from the Offline Files context menu, and it disables the Settings button in the Offline Files Status dialog box. This option also prevents users from viewing or changing the options on the Offline Files tab and in the Offline Files dialog box. Option affects the whole PC. Reboot your PC to activate or deactivate this option. [Applicable to Windows 2000/XP/2003.](#)
- **Disable the Make Available Offline Option** - This restriction disables the Make Available Offline option. When this option is turned on, users can not make network files and folders available offline. Option affects the whole PC. Reboot your PC to activate or deactivate this option. [Applicable to Windows 2000/XP/2003.](#)
- **Disable Changing the Enable Reminders Option** - When this restriction is enabled, users can not change the Enable Reminders option and its suboptions in the Offline Files options. Option affects the whole PC. Reboot your PC to activate or deactivate this option. [Applicable to Windows 2000/XP/2003.](#)
- **Delete Local Copies of User Offline Files At LogOff** - When this restriction is enabled, the local copies of offline files are retained only while the user is logged on the computer. When the user logs off, the system empties the cache of Offline Files. Option affects the whole PC. Reboot your PC to activate or deactivate this option. [Applicable to Windows 2000/XP/2003.](#)
- **Disable Changing of Synchronization Options** - This restriction prevents users from changing the Synchronize All Offline Files Before Logging Off option on the Offline Files tab. Option affects the whole PC. Reboot your PC to activate or deactivate this option. [Applicable to Windows 2000/XP/2003.](#)
- **Force Amount of Disk Space Used for Temporary Offline Files** - When this restriction is enabled, the system disables the Amount of Disk Space to Use for Temporary Offline Files option on the Offline Files tab in Folder Options of Windows Explorer. This setting also prevents users from changing this option. Enter an integer number below. Option affects the whole PC. Reboot your PC to activate or deactivate this option. [Applicable to Windows 2000/XP/2003.](#)
- **Force Reminder Balloon Frequency for Offline Files** - When this restriction is enabled, the system removes the Display Reminder Balloon Every [N] Minutes option on the Offline Files tab. It also prevents users from changing this setting. Enter an integer number below. Option affects the whole PC. Reboot your PC to activate or deactivate this option. [Applicable to Windows 2000/XP/2003.](#)

See also:

- [All restrictions.](#)
- [How to use.](#)
- [How to spy on your PC users.](#)
- [How to copy restrictions between users in the tree.](#)
- [How to Export/Import restrictions.](#)
- [How to lock your personal computer with a password.](#)
- [How to deny access to 1st Security Agent.](#)

- About the program.
- Purpose of the program.
- User interface.

[Remote Access and Dial-Up Networking Restrictions](#)

The following restrictions are available in this group:

- **Disabling Save Password Option in Dial-Up Networking** - When you dial a phonebook entry in Dial-Up Networking (DUN), you can use the 'Save Password' option so that your DUN password is cached and you will not need to enter it on successive dial attempts. This key disables that option. Option affects the whole PC. Reboot your PC to activate or deactivate this option. [Applicable to Windows NT/2000/XP/2003.](#)
- **Disable the "Log on using dial-up connection" Check Box** - During logon Windows allows users to optionally connect to a Windows domain using dial-up networking, this tweak can be used to disable that option. Option affects the whole PC. Reboot your PC to activate or deactivate this option. [Applicable to Windows NT/2000.](#)
- **Disable Dial-In Access** - It's possible for users to setup a modem on a Windows machine, and by using Dial-up Networking allow callers to connect to the internal network. Especially in a corporate environment this can cause a major security risk. Option affects the whole PC. Reboot your PC to activate or deactivate this option. [Applicable to Windows 95/98/ME.](#)

See also:

- [All restrictions.](#)
- [How to use.](#)
- [How to spy on your PC users.](#)
- [How to copy restrictions between users in the tree.](#)
- [How to Export/Import restrictions.](#)
- [How to lock your personal computer with a password.](#)
- [How to deny access to 1st Security Agent.](#)
- [About the program.](#)
- [Purpose of the program.](#)
- [User interface.](#)

Shutdown and Logon Scripts Security Restrictions

The following restrictions are available in this group:

- **Hide the Shutdown Scripts** - This setting controls whether the output from the shutdown scripts is displayed in a console window as the script executes. Option affects the whole PC. Reboot your PC to activate or deactivate this option. [Applicable to Windows 2000/XP/2003.](#)
- **Run the Logon Scripts Synchronously** - This setting directs the system to wait for the logon scripts to finish running before it starts the Windows Explorer interface program and creates the desktop. Option affects the whole PC. Reboot your PC to activate or deactivate this option. [Applicable to Windows 2000/XP/2003.](#)
- **Run the Startup Scripts Synchronously** - Startup scripts are files that run before the user logs on. This setting allows you choose to run the scripts consecutively or simultaneously. If you turn the option on, your scripts will be run consecutively. Option affects the whole PC. Reboot your PC to activate or deactivate this option. [Applicable to Windows 2000/XP/2003.](#)
- **Hide the Startup Scripts** - This setting controls whether the output from the startup scripts is displayed in a console window as the script executes. Option affects the whole PC. Reboot your PC to activate or deactivate this option. [Applicable to Windows 2000/XP/2003.](#)

See also:

- [All restrictions.](#)
- [How to use.](#)
- [How to spy on your PC users.](#)
- [How to copy restrictions between users in the tree.](#)
- [How to Export/Import restrictions.](#)
- [How to lock your personal computer with a password.](#)
- [How to deny access to 1st Security Agent.](#)
- [About the program.](#)
- [Purpose of the program.](#)
- [User interface.](#)

Miscellaneous Software Restrictions

Outlook Express Security Restrictions

- **Block Executable Attachments in Outlook Express** - Outlook Express normally allows you to view and save all e-mail attachments. This option blocks executable files that potentially contain harmful viruses. Option affects the whole PC. Reopen Outlook Express to activate this option. [Applicable to Windows 95/98/ME/NT/2000/XP/2003.](#)
- **Disable Account Changes in Outlook Express** - This setting disables the ability for users to create or modify any mail, news or directory accounts in Outlook Express. Option affects the whole PC. Reopen Outlook Express to activate this option. [Applicable to Windows 95/98/ME/NT/2000/XP/2003.](#)
- **Remove Windows Messenger from Outlook Express** - This restriction is used to remove MSN Instant Messenger functionality and integration from Outlook Express. Option affects the whole PC. Reopen Outlook Express to activate this option. [Applicable to Windows 95/98/ME/NT/2000/XP/2003.](#)
- **Disable HTTP Mail in Outlook Express** - This option is used to specify whether HTTP mail accounts, such as Hotmail, can be used or created in Outlook Express. Option affects the whole PC. Reopen Outlook Express to activate this option. [Applicable to Windows 95/98/ME/NT/2000/XP/2003.](#)
- **Prevent Users from Using Identities** - This restriction will prevent users from using identities. Option affects the whole PC. Reopen Outlook Express to activate this option. [Applicable to Windows 98/ME/2000/XP/2003.](#)

Windows Media Player Security Restrictions

- **Disable Auto Upgrade with Windows Media Player** - When Windows Media Player is used it will periodically check for newer versions via the Internet. This restriction lets you turn off this checking and notification. Option affects the whole PC. Restart Windows Media Player for the changes to take effect. [Applicable to Windows 95/98/ME/NT/2000/XP/2003.](#)
- **Remove Windows Media Player Right Click Options** - This restriction will remove right click options such as Play, Queue-it-up, Add to Playlist, etc. from the right-click context menu of Windows Explorer. Option affects selected user, see the status bar. Reboot your PC to activate or deactivate this option. [Applicable to Windows 95/98/ME/NT/2000/XP/2003.](#)

Microsoft Office Security Restrictions

- **Disable Password Caching in Microsoft Office** - By default, Microsoft Office attempts to cache user authentication information while making connections to external data sources. Because passwords are saved into text files, this creates a major security problem. This restriction lets you disable such behavior. Option affects the whole PC. Reboot your PC to activate or deactivate this option. [Applicable to Windows 95/98/ME/NT/2000/XP/2003.](#)
- **Disable the Microsoft Office Tune Up Feature** - This restriction disables the automatic Microsoft Office tune up feature. Option affects the whole PC. Reboot your PC to activate or deactivate this option. [Applicable to Windows 95/98/ME/NT/2000/XP/2003.](#)
- **Suppress Secure Email Certificate Checking** - When you send a secure message in Microsoft Outlook, you may need to use a certificate that does not match your e-mail address. This restriction turns off e-mail address matching for certificates. Option affects the whole PC. Reboot your PC to activate or deactivate this option. [Applicable to Windows 95/98/ME/NT/2000/XP/2003.](#)

Microsoft MSN Instant Messenger Security Restrictions

- **Customize the Windows Messenger Warning Message** - Upon starting a chat in Windows Messenger a warning message is shown in the chat window. In English version of Windows the message says "Never give out your password or credit card number in an instant message conversation". This option lets you customize this message for example to display chat policy of your company. Note that Windows Messenger is not the same thing as MSN Messenger. Option affects the whole PC. Reboot your PC to activate or deactivate this option. [Applicable to Windows 95/98/ME/NT/2000/XP/2003.](#)
- **Disable SSDP Discovery in Windows Messenger** - Windows Messenger uses Simple Service Discovery Protocol (SSDP) to locate upstream Internet gateways on the UDP port 1900. This option lets you disable the Universal Plug and Play Network Address Translation discovery to reduce

bandwidth consumption and increase security. Option affects the whole PC. Reboot your PC to activate or deactivate this option. [Applicable to Windows 2000/XP/2003.](#)

See also:

- [All restrictions.](#)
- [How to use.](#)
- [How to spy on your PC users.](#)
- [How to copy restrictions between users in the tree.](#)
- [How to Export/Import restrictions.](#)
- [How to lock your personal computer with a password.](#)
- [How to deny access to 1st Security Agent.](#)
- [About the program.](#)
- [Purpose of the program.](#)
- [User interface.](#)

[Screen Lock, User Options](#)

The following restrictions are available in this group:

- **Screen-lock Password** - If enabled, the password will be applied only to this PC user, so the user will use this password (even if the common password is enabled) to get through the built-in screen-lock every time desktop is locked with the built-in screen-lock. If you want to use the same password for all PC users, set up the common password (see the folder "Screen Lock" in the folder "Common Restrictions" of the tree) and uncheck this option. Screen Lock is an application you can use to lock your desktop while you are away (see the icon "1st Screen Lock" on the desktop of your PC). Option affects selected user, see the status bar. [Applicable to Windows 95/98/ME/NT/2000/XP/2003.](#)
- **Screen-lock Background Image** - You can select an image here, which will be used as a background in the built-in screen-lock. You can change the picture as many times as you want. To disable the background picture (use the common screen-lock options), uncheck the checkbox. The image will be applied to this PC user only. If you want to use the same image for all PC users, set up the common image (see the folder "Screen Lock" in the folder "Common Restrictions" of the tree) and uncheck this option. Option affects selected user, see the status bar. [Applicable to Windows 95/98/ME/NT/2000/XP/2003.](#)

See also:

- [All restrictions.](#)
- [How to use.](#)
- [How to spy on your PC users.](#)
- [How to copy restrictions between users in the tree.](#)
- [How to Export/Import restrictions.](#)
- [How to lock your personal computer with a password.](#)
- [How to deny access to 1st Security Agent.](#)
- [About the program.](#)
- [Purpose of the program.](#)
- [User interface.](#)

MS-DOS and Windows 3.x Application Restrictions

The following restrictions are available in this group:

- **Disable the MS-DOS Command Prompt** - This setting allows you to disable the use of the MS-DOS command prompt in Windows. After setting this restriction up all applications, which use the command prompt will be disabled. Option affects selected user, see the status bar. Reboot your PC to activate or deactivate this option. [Applicable to Windows 95/98/ME.](#)
- **Disable Single Mode MS-DOS Applications** - This setting allows you to disable the use of real mode DOS applications from within the Windows shell. Option affects selected user, see the status bar. Reboot your PC to activate or deactivate this option. [Applicable to Windows 95/98/ME.](#)
- **Disable Command Prompt and Batch Files** - This restriction allows you to disable the Command Prompt (CMD) and the ability to execute DOS batch files in NT-based Windows such as Windows NT/2000/XP and higher. You can selectively allow batch files to be run. Option affects selected user, see the status bar. Reboot your PC to activate or deactivate this option. [Applicable to Windows NT/2000/XP/2003.](#)

See also:

- [All restrictions.](#)
- [How to use.](#)
- [How to spy on your PC users.](#)
- [How to copy restrictions between users in the tree.](#)
- [How to Export/Import restrictions.](#)
- [How to lock your personal computer with a password.](#)
- [How to deny access to 1st Security Agent.](#)
- [About the program.](#)
- [Purpose of the program.](#)
- [User interface.](#)

[Control Panel Security Restrictions](#)

The following subgroups are available in this group:

- **Add or Remove Programs** - Add or Remove Programs Restrictions.
- **Display** - Display Properties Restrictions.
- **Network** - Network Properties Restrictions.
- **Network Connections** - Network Connection Restrictions.
- **Passwords** - Password Properties Restrictions.
- **Printers** - Printer Properties Restrictions.
- **System** - System Properties Restrictions.
- **Internet Options** – Internet Options Restrictions.
- **Applets** - Control Panel Applet Restrictions.

See also:

- [All restrictions.](#)
- [How to use.](#)
- [How to spy on your PC users.](#)
- [How to copy restrictions between users in the tree.](#)
- [How to Export/Import restrictions.](#)
- [How to lock your personal computer with a password.](#)
- [How to deny access to 1st Security Agent.](#)
- [About the program.](#)
- [Purpose of the program.](#)
- [User interface.](#)

[Add or Remove Programs Restrictions](#)

The following restrictions are available in this group:

- **Disable Add/Remove Programs** - This option disables Add/Remove Programs. Option affects selected user, see the status bar. Reboot your PC to activate or deactivate this option. [Applicable to Windows 2000/XP/2003.](#)
- **Disable Change and Remove Programs** - This option disables Change and Remove Programs. Option affects selected user, see the status bar. Reboot your PC to activate or deactivate this option. [Applicable to Windows 2000/XP/2003.](#)
- **Disable Add Programs** - This option disables Add Programs. Option affects selected user, see the status bar. Reboot your PC to activate or deactivate this option [Applicable to Windows 2000/XP/2003.](#)
- **Disable Windows Components Wizard** - This option disables Windows Components Wizard. Option affects selected user, see the status bar. Reboot your PC to activate or deactivate this option [Applicable to Windows 2000/XP/2003.](#)
- **Hide "Add a program from CD-ROM or disk" option** - This option hides "Add a program from CD-ROM or disk" option. Option affects selected user, see the status bar. Reboot your PC to activate or deactivate this option [Applicable to Windows 2000/XP/2003.](#)
- **Hide "Add programs from Microsoft" option** - This option hides "Add programs from Microsoft" option. Option affects selected user, see the status bar. Reboot your PC to activate or deactivate this option [Applicable to Windows 2000/XP/2003.](#)
- **Hide "Add programs from your network" option** - This option hides "Add programs from your network" option. Option affects selected user, see the status bar. Reboot your PC to activate or deactivate this option [Applicable to Windows 2000/XP/2003.](#)
- **Go directly to Windows Components Wizard** - Go directly to Windows Components Wizard. Option affects selected user, see the status bar. Reboot your PC to activate or deactivate this option [Applicable to Windows 2000/XP/2003.](#)
- **Disable Support Information** - This option disables Disable Support Information. Option affects selected user, see the status bar. Reboot your PC to activate or deactivate this option [Applicable to Windows 2000/XP/2003.](#)
- **Hide Set Program Access and Defaults** - This option is used to hide "Set Program Access and Defaults" on the Add or Remove Programs page. This feature was introduced with Windows XP SP1 and Windows 2000 SP3 to allow users to configure the default applications used on the PC. Option affects selected user, see the status bar. Reboot your PC to activate or deactivate this option [Applicable to Windows 2000/XP/2003.](#)

See also:

- [Control Panel Security Restrictions.](#)
- [All restrictions.](#)
- [How to use.](#)
- [How to spy on your PC users.](#)
- [How to copy restrictions between users in the tree.](#)
- [How to Export/Import restrictions.](#)
- [How to lock your personal computer with a password.](#)
- [How to deny access to 1st Security Agent.](#)
- [About the program.](#)
- [Purpose of the program.](#)
- [User interface.](#)

Display Properties Restrictions

The following restrictions are available in this group:

- **Deny Access to the Display Settings** - This option disables the display settings control panel icon, and stops users from accessing any display settings. Option affects selected user, see the status bar. Reboot your PC to activate or deactivate this option. [Applicable to Windows 95/98/ME/NT/2000/XP/2003.](#)
- **Hide the Display Appearance Page** - This setting, once enabled, hides the display settings appearance page. Option affects selected user, see the status bar. Reboot your PC to activate or deactivate this option. [Applicable to Windows 95/98/ME/NT/2000/XP/2003.](#)
- **Hide the Display Background Page** - This option hides the background page, stopping users from changing any background display settings. Option affects selected user, see the status bar. Reboot your PC to activate or deactivate this option. [Applicable to Windows 95/98/ME/NT/2000/XP/2003.](#)
- **Hide the Screen Saver Settings Page** - This option hides the screen saver page from the display settings control, which stops users having access to change screen saver settings. Option affects selected user, see the status bar. Reboot your PC to activate or deactivate this option. [Applicable to Windows 95/98/ME/NT/2000/XP/2003.](#)
- **Hide the Display Settings Page** - This option hides the Settings page from the display properties control. Option affects selected user, see the status bar. Reboot your PC to activate or deactivate this option. [Applicable to Windows 95/98/ME/NT/2000/XP/2003.](#)
- **Disable the "Windows and buttons" style control** - Disables the "Windows and buttons" style control in the tab Appearance of the Display Properties dialog. Option affects selected user, see the status bar. Reboot your PC to activate or deactivate this option. [Applicable to Windows XP/2003.](#)
- **Disable the "Color scheme" control** - Disables the "Color scheme" control in the tab Appearance of the Display Properties dialog. Option affects selected user, see the status bar. Reboot your PC to activate or deactivate this option. [Applicable to Windows XP/2003.](#)
- **Disable the "Font size" control** - Disables the "Font size" control in the tab Appearance of the Display Properties dialog. Option affects selected user, see the status bar. Reboot your PC to activate or deactivate this option. [Applicable to Windows XP/2003.](#)
- **Hide the Themes Settings Page** - This option hides the Themes tab which prevents the user from selecting an alternate theme. Themes normally include a background plus sounds, icons and other elements. Option affects selected user, see the status bar. Reboot your PC to activate or deactivate this option. [Applicable to Windows XP/2003.](#)
- **Hide the Keyboard Navigation Settings** - This restriction disables the "Hide keyboard navigation indicators until I use the ALT key" option in the Display Control Panel (see Appearance->Effects). Option affects selected user, see the status bar. Reboot your PC to activate or deactivate this option. [Applicable to Windows 2000/XP/2003.](#)
- **Restrict Changes to Animation Settings** - This restriction prevents users from selecting the option to animate the movement of windows and menus. Option affects selected user, see the status bar. Reboot your PC to activate or deactivate this option. [Applicable to Windows 2000/XP/2003.](#)
- **Force the Background Image and Wallpaper Style** - This setting allows you to specify the background wallpaper and display style. When this setting is defined users can not choose an alternative background image. If a user changes wallpaper with Internet Explorer or with any other software, your original wallpaper will always be restored on reboot. See also the Explorer group if you need to lock desktop icons as well. Option affects selected user, see the status bar. [Applicable to Windows 95/98/ME/NT/2000/XP/2003.](#)
- **Force Using Windows Classic Theme** - This restriction will force using Windows Classic theme. The user will be still able to select another theme but after reboot the classic theme will be restored back. Option affects selected user, see the status bar. Reboot your PC to activate or deactivate this option. [Applicable to Windows XP/2003.](#)
- **Force Using Selected Screen Saver** - This restriction lets you force using a selected screensaver and disallow changing it in the Display properties dialog box. Select screensaver file path below. Option affects selected user, see the status bar. Reboot your PC to activate or deactivate this option. [Applicable to Windows 2000/XP/2003.](#)
- **Force Specific Screen Saver Timeout** - This restriction lets you force the specified (below) timeout

(in seconds) for the current screen saver. When this restriction is enabled, the user can not change the screen saver timeout setting using the Display properties dialog box as well. Enter the timeout in seconds below. Option affects selected user, see the status bar. Reboot your PC to activate or deactivate this option. [Applicable to Windows XP/2003.](#)

See also:

- [Control Panel Security Restrictions.](#)
- [All restrictions.](#)
- [How to use.](#)
- [How to spy on your PC users.](#)
- [How to copy restrictions between users in the tree.](#)
- [How to Export/Import restrictions.](#)
- [How to lock your personal computer with a password.](#)
- [How to deny access to 1st Security Agent.](#)
- [About the program.](#)
- [Purpose of the program.](#)
- [User interface.](#)

Network Properties Restrictions

The following restrictions are available in this group:

- **Disable Network Control Panel** - Enabling this option disables access to the Network Control Panel icon. Option affects selected user, see the status bar. Reboot your PC to activate or deactivate this option. [Applicable to Windows 95/98/ME.](#)
- **Hide the File and Printer Sharing Controls** - Enabling this options hides the file and printer sharing controls, stopping users from disabling or creating new file or printer shares. Option affects selected user, see the status bar. Reboot your PC to activate or deactivate this option. [Applicable to Windows 95/98/ME.](#)
- **Hide Network Identification Page** - The Network Identification page include options to set the Computer Name, Workgroup and Description, enabling this option disables access to the Network ID page. Option affects selected user, see the status bar. Reboot your PC to activate or deactivate this option. [Applicable to Windows 95/98/ME.](#)
- **Hide Network Access Control Page** - The Access Control Page, defines whether the computer support User-Level access or Share-Level access, enabling this option removes access to the Access Control Page. Option affects selected user, see the status bar. Reboot your PC to activate or deactivate this option. [Applicable to Windows 95/98/ME.](#)

See also:

- [Control Panel Security Restrictions.](#)
- [All restrictions.](#)
- [How to use.](#)
- [How to spy on your PC users.](#)
- [How to copy restrictions between users in the tree.](#)
- [How to Export/Import restrictions.](#)
- [How to lock your personal computer with a password.](#)
- [How to deny access to 1st Security Agent.](#)
- [About the program.](#)
- [Purpose of the program.](#)
- [User interface.](#)

Network Connections Restrictions

The following restrictions are available in this group:

- **Restrict add and remove network components** - Restricts add and remove network components. Option affects selected user, see the status bar. Reboot your PC to activate or deactivate this option. [Applicable to Windows 2000.](#)
- **Restrict changes to Advanced Settings** - Restricts changes to Advanced Settings. Option affects selected user, see the status bar. Reboot your PC to activate or deactivate this option. [Applicable to Windows 2000.](#)
- **Restrict changes to advanced TCPIP configuration** - Restricts changes to advanced TCPIP configuration. Option affects selected user, see the status bar. Reboot your PC to activate or deactivate this option. [Applicable to Windows 2000.](#)
- **Restrict changes to protocol and service bindings** - Restricts changes to protocol and service bindings. Option affects selected user, see the status bar. Reboot your PC to activate or deactivate this option. [Applicable to Windows 2000.](#)
- **Restrict deletion of public RAS connections** - Restricts deletion of public RAS connections. Option affects selected user, see the status bar. Reboot your PC to activate or deactivate this option. [Applicable to Windows 2000.](#)
- **Restrict deletion of RAS connections** - Restricts deletion of RAS connections. Option affects selected user, see the status bar. Reboot your PC to activate or deactivate this option. [Applicable to Windows 2000.](#)
- **Restrict changes to the Dial-up Preferences** - Restricts changes to the Dial-up Preferences. Option affects selected user, see the status bar. Reboot your PC to activate or deactivate this option. [Applicable to Windows 2000.](#)
- **Enable Windows 2000 network connections for administrators** - Enables Windows 2000 network connections for administrators. Option affects selected user, see the status bar. Reboot your PC to activate or deactivate this option. [Applicable to Windows 2000.](#)
- **Restrict access to component properties of a LAN connection** - Restricts access to component properties of a LAN connection. Option affects selected user, see the status bar. Reboot your PC to activate or deactivate this option. [Applicable to Windows 2000.](#)
- **Restrict connecting and disconnecting a LAN connection** - Restricts connecting and disconnecting a LAN connection. Option affects selected user, see the status bar. Reboot your PC to activate or deactivate this option. [Applicable to Windows 2000.](#)
- **Restrict access to properties of a LAN connection** - Restricts access to properties of a LAN connection. Option affects selected user, see the status bar. Reboot your PC to activate or deactivate this option. [Applicable to Windows 2000.](#)
- **Disable the Network Connection wizard** - Disables the Network Connection wizard. Option affects selected user, see the status bar. Reboot your PC to activate or deactivate this option. [Applicable to Windows 2000.](#)
- **Restrict access to properties of public RAS connections** - Restricts access to properties of public RAS connections. Option affects selected user, see the status bar. Reboot your PC to activate or deactivate this option. [Applicable to Windows 2000.](#)
- **Restrict access to properties of a RAS connection** - Restricts access to properties of a RAS connection. Option affects selected user, see the status bar. Reboot your PC to activate or deactivate this option. [Applicable to Windows 2000.](#)
- **Restrict connecting and disconnecting a RAS connection** - Restricts connecting and disconnecting a RAS connection. Option affects selected user, see the status bar. Reboot your PC to activate or deactivate this option. [Applicable to Windows 2000.](#)
- **Restrict access to private RAS connection properties** - Restricts access to private RAS connection properties. Option affects selected user, see the status bar. Reboot your PC to activate or deactivate this option. [Applicable to Windows 2000.](#)
- **Restrict renaming of public RAS connections** - Restricts renaming of public RAS connections. Option affects selected user, see the status bar. Reboot your PC to activate or deactivate this option. [Applicable to Windows 2000.](#)
- **Restrict renaming of connections** - Restricts renaming of connections. Option affects selected user,

- see the status bar. Reboot your PC to activate or deactivate this option. [Applicable to Windows 2000.](#)
- **Restrict renaming of LAN connections** - Restricts renaming of LAN connections. Option affects selected user, see the status bar. Reboot your PC to activate or deactivate this option. [Applicable to Windows 2000.](#)
- **Restrict renaming of private RAS connections** - Restricts renaming of private RAS connections. Option affects selected user, see the status bar. Reboot your PC to activate or deactivate this option. [Applicable to Windows 2000.](#)
- **Disable status statistics for an active connection** - Disables status statistics for an active connection. Option affects selected user, see the status bar. Reboot your PC to activate or deactivate this option. [Applicable to Windows 2000.](#)

See also:

- [Control Panel Security Restrictions.](#)
- [All restrictions.](#)
- [How to use.](#)
- [How to spy on your PC users.](#)
- [How to copy restrictions between users in the tree.](#)
- [How to Export/Import restrictions.](#)
- [How to lock your personal computer with a password.](#)
- [How to deny access to 1st Security Agent.](#)
- [About the program.](#)
- [Purpose of the program.](#)
- [User interface.](#)

Password Properties Restrictions

The following restrictions are available in this group:

- **Restrict Access to the Passwords Control Panel** - This options disables access to the Passwords icon on the control panel, therefore stopping users from changing security related settings. Option affects selected user, see the status bar. Reboot your PC to activate or deactivate this option. [Applicable to Windows 95/98/ME.](#)
- **Hide the User Profiles Page** - The user profile page controls whether all users share or have separate user profiles, access to this page can be disabled by enabling this setting. Option affects selected user, see the status bar. Reboot your PC to activate or deactivate this option. [Applicable to Windows 95/98/ME.](#)
- **Hide the Change Passwords Page** - When this setting is enabled, users are no longer able to access the Change Passwords page. Option affects selected user, see the status bar. Reboot your PC to activate or deactivate this option. [Applicable to Windows 95/98/ME.](#)
- **Hide the Remote Administration Page** - Enabling this function stops users from being able to change the remote administration settings for the computer. Option affects selected user, see the status bar. Reboot your PC to activate or deactivate this option. [Applicable to Windows 95/98/ME.](#)

See also:

- [Control Panel Security Restrictions.](#)
- [All restrictions.](#)
- [How to use.](#)
- [How to spy on your PC users.](#)
- [How to copy restrictions between users in the tree.](#)
- [How to Export/Import restrictions.](#)
- [How to lock your personal computer with a password.](#)
- [How to deny access to 1st Security Agent.](#)
- [About the program.](#)
- [Purpose of the program.](#)
- [User interface.](#)

Printer Properties Restrictions

The following restrictions are available in this group:

- **Disable the Addition of Printers** - Any user can add a new printer their system, this option once enabled disables the addition of new printers to the computer. Option affects selected user, see the status bar. Reboot your PC to activate or deactivate this option. [Applicable to Windows 95/98/ME/NT/2000/XP/2003.](#)
- **Disable the Deletion of Printers** - Printers can be deleted simply by anyuser pressing the delete key, enabling this setting stops users from being able to delete printers. Option affects selected user, see the status bar. Reboot your PC to activate or deactivate this option. [Applicable to Windows 95/98/ME/NT/2000/XP/2003.](#)
- **Hide the General and Details Printer Pages** - This option hides the printer details and general printer information pages. Once enabled this option stops users from changing specific printer settings. Option affects selected user, see the status bar. Reboot your PC to activate or deactivate this option. [Applicable to Windows 95/98/ME.](#)
- **Disable Printers Control Panel Icon** - This option disables access to the Printers icon in control panel, therefore stopping users from changing Printer settings. For Windows 2000/XP, see the tree node Special Icons. Option affects selected user, see the status bar. Reboot your PC to activate or deactivate this option. [Applicable to Windows 95/98/ME.](#)
- **Restrict All Printers for Point and Print Service** - This restriction lets you restrict all printers for the Point and Print service. This restriction regards to Point and Print feature. Option affects selected user, see the status bar. Reboot your PC to activate or deactivate this option. [Applicable to Windows XP/2003.](#)
- **Restrict Printer Access to Printers in the Forest** - This restriction restricts printer access to printers in the forest. This restriction regards to Point and Print feature. Option affects selected user, see the status bar. Reboot your PC to activate or deactivate this option. [Applicable to Windows XP/2003.](#)
- **Allow Only Certain Printers for Point and Print Service** - This restriction lets you give access to only trusted printers from the list you can create below. When you add servers to this list, you must use their fully qualified domain names (FQDNs), for example: server.domain.microsoft.com This restriction regards to Point and Print feature. Option affects selected user, see the status bar. Reboot your PC to activate or deactivate this option. [Applicable to Windows XP/2003.](#)

See also:

- [Control Panel Security Restrictions.](#)
- [All restrictions.](#)
- [How to use.](#)
- [How to spy on your PC users.](#)
- [How to copy restrictions between users in the tree.](#)
- [How to Export/Import restrictions.](#)
- [How to lock your personal computer with a password.](#)
- [How to deny access to 1st Security Agent.](#)
- [About the program.](#)
- [Purpose of the program.](#)
- [User interface.](#)

System Properties Restrictions

The following restrictions are available in this group:

- **Hide the Hardware Profiles Page** - The settings when enabled hides the Hardware Profiles page from the System icon on the Control Panel. Option affects selected user, see the status bar. Reboot your PC to activate or deactivate this option. [Applicable to Windows 95/98/ME.](#)
- **Hide the Device Manager Page** - This setting controls whether the Device Manager, under Control Panel->System is visible. Option affects selected user, see the status bar. Reboot your PC to activate or deactivate this option. [Applicable to Windows 95/98/ME.](#)
- **Hide the File System Button** - This option hides the File System button from the System icon on the Control Panel. Option affects selected user, see the status bar. Reboot your PC to activate or deactivate this option. [Applicable to Windows 95/98/ME.](#)
- **Hide the Virtual Memory Button** - This option hides the Virtual Memory button from the System icon on the Control Panel. Option affects selected user, see the status bar. Reboot your PC to activate or deactivate this option. [Applicable to Windows 95/98/ME.](#)

See also:

- [Control Panel Security Restrictions.](#)
- [All restrictions.](#)
- [How to use.](#)
- [How to spy on your PC users.](#)
- [How to copy restrictions between users in the tree.](#)
- [How to Export/Import restrictions.](#)
- [How to lock your personal computer with a password.](#)
- [How to deny access to 1st Security Agent.](#)
- [About the program.](#)
- [Purpose of the program.](#)
- [User interface.](#)

Internet Options Restrictions

The following restrictions are available in this group:

- **Disable Accessibility Button** - Disables Accessibility button in Internet Options of Control Panel. See General tab of Internet Options. Option affects selected user, see the status bar. [Applicable to Windows 95/98/ME/NT/2000/XP/2003.](#)
- **Disable Changing Cache Settings** - Disable the ability to change settings of Temporary Internet Files in Internet Options. See General tab of Internet Options. Option affects selected user, see the status bar. [Applicable to Windows 95/98/ME/NT/2000/XP/2003.](#)
- **Disable Buttons in Internet Cache Settings** - Disables Delete Files and Settings buttons in Temporary Internet Files of Internet Options. See General tab of Internet Options. Option affects selected user, see the status bar. [Applicable to Windows 95/98/ME/NT/2000/XP/2003.](#)
- **Disable Changing Colors in Color Settings** - Disables the ability to change Colors in Color Settings of Internet Options. See Colors button of General tab of Internet Options. Option affects selected user, see the status bar. [Applicable to Windows 95/98/ME/NT/2000/XP/2003.](#)
- **Disable Changing Links in Color Settings** - Disables the ability to change Links in Color Settings of Internet Options. See Colors button of General tab of Internet Options. Option affects selected user, see the status bar. [Applicable to Windows 95/98/ME/NT/2000/XP/2003.](#)
- **Disable Changing Fonts** - Disables the ability to change Fonts in Internet Options. See General tab of Internet Options. Option affects selected user, see the status bar. [Applicable to Windows 95/98/ME/NT/2000/XP/2003.](#)
- **Disable Changing Languages** - Disables the ability to change Languages in Internet Options. See General tab of Internet Options. Option affects selected user, see the status bar. [Applicable to Windows 95/98/ME/NT/2000/XP/2003.](#)
- **Disable Changing History Settings** - Disables the ability to change History settings of Internet Options. See General tab of Internet Options. Option affects selected user, see the status bar. [Applicable to Windows 95/98/ME/NT/2000/XP/2003.](#)
- **Disable Changing Home Page** - Disables the ability to change Home Page in Internet Settings. See General tab of Internet Options. Option affects selected user, see the status bar. [Applicable to Windows 95/98/ME/NT/2000/XP/2003.](#)
- **Hide General Tab** - Hides General tab of Internet Options. See General tab of Internet Options. Option affects selected user, see the status bar. [Applicable to Windows 95/98/ME/NT/2000/XP/2003.](#)
- **Disable Adding Sites on Security Tab** - Disables the ability to add sites on Security Tab. See Security tab of Internet Options. Option affects selected user, see the status bar. [Applicable to Windows 95/98/ME/NT/2000/XP/2003.](#)
- **Disable Changing Security Settings** - Disables the ability to change Security Settings settings in Internet Options. See Security tab of Internet Options. Option affects selected user, see the status bar. [Applicable to Windows 95/98/ME/NT/2000/XP/2003.](#)
- **Hide Security Tab** - Hides Security tab of Internet Options. See Security tab of Internet Options. Option affects selected user, see the status bar. [Applicable to Windows 95/98/ME/NT/2000/XP/2003.](#)
- **Disable Changing Options of Certificates** - Disables Certificates and Publishers buttons of Certificates group of Internet Options. See Content tab of Internet Options. Option affects selected user, see the status bar. [Applicable to Windows 95/98/ME/NT/2000/XP/2003.](#)
- **Disable Certificates Button** - Disables Certificates button of Certificates group of Internet Options. See Content tab of Internet Options. Option affects selected user, see the status bar. [Applicable to Windows 95/98/ME/NT/2000/XP/2003.](#)
- **Disable Publishers Button** - Disables Publishers button of Certificates group of Internet Options. See Content tab of Internet Options. Option affects selected user, see the status bar. [Applicable to Windows 95/98/ME/NT/2000/XP/2003.](#)
- **Disable Changing Settings of Trusted Sites** - Disables changing settings of Trusted Sites. It also disables Certificates button of Certificates group of Internet Options. See Content tab of Internet Options. Option affects selected user, see the status bar. [Applicable to Windows 95/98/ME/NT/2000/XP/2003.](#)
- **Disable MyProfile Button** - Disables MyProfile button in Personal Information of Internet Options. See Content tab of Internet Options. Option affects selected user, see the status bar. [Applicable to](#)

[Windows 95/98/ME/NT/2000/XP/2003.](#)

- **Disable Changing Content Advisor Settings** - Disables the ability to change Content Advisor settings in Internet Options. See Content tab of Internet Options. Option affects selected user, see the status bar. [Applicable to Windows 95/98/ME/NT/2000/XP/2003.](#)
- **Hide Content Tab** - Hides Content tab of Internet Options. See Content tab of Internet Options. Option affects selected user, see the status bar. [Applicable to Windows 95/98/ME/NT/2000/XP/2003.](#)
- **Disable Changing Automatic Configuration** - Disables the ability to change Automatic Configuration in LAN Settings of Internet Options. See Connections Tab of Internet Options. Option affects selected user, see the status bar. [Applicable to Windows 95/98/ME/NT/2000/XP/2003.](#)
- **Disable Changing Proxy Settings** - Disables the ability to change Proxy Settings in Internet Options. See Connections Tab of Internet Options. Option affects selected user, see the status bar. [Applicable to Windows 95/98/ME/NT/2000/XP/2003.](#)
- **Disable Changing Connections** - Disables the ability to change Connections in Internet Options. See Connections tab of Internet Options. Option affects selected user, see the status bar. [Applicable to Windows 95/98/ME/NT/2000/XP/2003.](#)
- **Disable the Connection Wizard** - Disables the Connection Wizard. Option affects selected user, see the status bar. [Applicable to Windows 95/98/ME/NT/2000/XP/2003.](#)
- **Disable the Internet Connection Wizard** - Disables the Internet Connection Wizard. See Connections tab of Internet Options. Option affects selected user, see the status bar. [Applicable to Windows 95/98/ME/NT/2000/XP/2003.](#)
- **Hide Connections Tab** - Hides Connections Tab of Internet Options. See Connections tab of Internet Options. Option affects selected user, see the status bar. [Applicable to Windows 95/98/ME/NT/2000/XP/2003.](#)
- **Disable Changing Messaging Programs** - Disables the ability to change Messaging Programs in Internet Programs of Internet Options. See Programs tab of Internet Options. Option affects selected user, see the status bar. [Applicable to Windows 95/98/ME/NT/2000/XP/2003.](#)
- **Disable Changing Calendar and Contact List** - Disables the ability to change Calendar and Contact List items of Internet Programs group of Internet Options. See Programs tab of Internet Options. Option affects selected user, see the status bar. [Applicable to Windows 95/98/ME/NT/2000/XP/2003.](#)
- **Disable Changing IE Default Browser** - Disables the ability to change the option "Internet Explorer should check to see whether it is the default browser" of Internet Options. See Programs tab of Internet Options. Option affects selected user, see the status bar. [Applicable to Windows 95/98/ME/NT/2000/XP/2003.](#)
- **Disable the Reset Web Settings Button** - Disables the Reset Web Settings button in Programs of Internet Options. See Programs tab of Internet Options. Option affects selected user, see the status bar. [Applicable to Windows 95/98/ME/NT/2000/XP/2003.](#)
- **Hide Programs Tab** - Hides Programs tab in Internet Options. See Programs tab of Internet Options. Option affects selected user, see the status bar. [Applicable to Windows 95/98/ME/NT/2000/XP/2003.](#)
- **Disable Changing Advanced Properties** - Disables the ability to change Advanced properties in Internet Options. See Advanced tab of Internet Options. Option affects selected user, see the status bar. [Applicable to Windows 95/98/ME/NT/2000/XP/2003.](#)
- **Hide Advanced Tab** - Hides Advanced tab of Internet Options. See Advanced tab of Internet Options. Option affects selected user, see the status bar. [Applicable to Windows 95/98/ME/NT/2000/XP/2003.](#)
- **Disable Changing IEAKContext** - Disables the ability to change IEAKContext. Option affects selected user, see the status bar. [Applicable to Windows 95/98/ME/NT/2000/XP/2003.](#)
- **Disable changes to Wallet settings** - Disables changes to Wallet settings. Option affects selected user, see the status bar. [Applicable to Windows 95/98/ME/NT/2000/XP/2003.](#)
- **Remove Privacy Tab** - Removes Privacy tab. Option affects selected user, see the status bar. [Applicable to Windows 95/98/ME/NT/2000/XP/2003.](#)
- **Prevent Changes to Privacy Settings** - Prevents changes to privacy settings. Option affects selected user, see the status bar. [Applicable to Windows 95/98/ME/NT/2000/XP/2003.](#)

See also:

- [Control Panel Security Restrictions.](#)
- [All restrictions.](#)
- [How to use.](#)

- [How to spy on your PC users.](#)
- [How to copy restrictions between users in the tree.](#)
- [How to Export/Import restrictions.](#)
- [How to lock your personal computer with a password.](#)
- [How to deny access to 1st Security Agent.](#)
- [About the program.](#)
- [Purpose of the program.](#)
- [User interface.](#)

Control Panel Applet Restrictions

The following restrictions are available in this group:

- **Allow Use of Only Certain Control Panel Applets** - This restriction allows you to disable all control panel applets in Control Panel except for the certain applets you want to be still enabled. If you enable this restriction without adding allowed applets, your Control Panel will appear empty (all applets will be disabled). You can add certain applets to the list of .cpl files (below) if you need them to be shown in Control Panel. The list below contains only allowed applets. Option affects selected user, see the status bar. Reboot your PC to activate or deactivate this option. [Applicable to Windows 2000/XP/2003.](#)
- **Disallow Use of Specific Control Panel Applets** - This restriction allows you to disable only specific control panel applets in Control Panel. If you enable this restriction without adding disallowed applets, your Control Panel will still show all applets as it was without this restriction (all applets will be enabled). You can add certain applets to the list of .cpl files (below) if you need to disable and hide them from Control Panel. The list below contains restricted applets. Option affects selected user, see the status bar. Reboot your PC to activate or deactivate this option. [Applicable to Windows 2000/XP/2003.](#)
- **Hide Accessibility Options in Control Panel** - Hides Accessibility Options control panel applet. Option affects selected user, see the status bar. Reboot your PC to activate or deactivate this option. [Applicable to Windows NT/2000/XP/2003.](#)
- **Hide Add/Remove Programs in Control Panel** - Hides Add/Remove Programs control panel applet. Option affects selected user, see the status bar. Reboot your PC to activate or deactivate this option. [Applicable to Windows NT/2000/XP/2003.](#)
- **Hide Display in Control Panel** - Hides Display control panel applet. Option affects selected user, see the status bar. Reboot your PC to activate or deactivate this option. [Applicable to Windows NT/2000/XP/2003.](#)
- **Hide Add Hardware in Control Panel** - Hides Add Hardware control panel applet. Option affects selected user, see the status bar. Reboot your PC to activate or deactivate this option. [Applicable to Windows NT/2000/XP/2003.](#)
- **Hide Internet Options in Control Panel** - Hides Internet Options control panel applet. Option affects selected user, see the status bar. Reboot your PC to activate or deactivate this option. [Applicable to Windows NT/2000/XP/2003.](#)
- **Hide Regional/Language Options in Control Panel** - Hides Regional/Language Options control panel applet. Option affects selected user, see the status bar. Reboot your PC to activate or deactivate this option. [Applicable to Windows NT/2000/XP/2003.](#)
- **Hide Game Controllers in Control Panel** - Hides Game Controllers control panel applet. Option affects selected user, see the status bar. Reboot your PC to activate or deactivate this option. [Applicable to Windows NT/2000/XP/2003.](#)
- **Hide Mouse and Keyboard in Control Panel** - Hides Mouse and Keyboard control panel applets. Option affects selected user, see the status bar. Reboot your PC to activate or deactivate this option. [Applicable to Windows NT/2000/XP/2003.](#)
- **Hide Sounds/Audio Devices in Control Panel** - Hides Sounds/Audio Devices control panel applet. Option affects selected user, see the status bar. Reboot your PC to activate or deactivate this option. [Applicable to Windows NT/2000/XP/2003.](#)
- **Hide User Accounts in Control Panel** - Hides User Accounts control panel applet. Option affects selected user, see the status bar. Reboot your PC to activate or deactivate this option. [Applicable to Windows NT/2000/XP/2003.](#)
- **Hide Power Options in Control Panel** - Hides Power Options control panel applet. Option affects selected user, see the status bar. Reboot your PC to activate or deactivate this option. [Applicable to Windows NT/2000/XP/2003.](#)
- **Hide System in Control Panel** - Hides System control panel applet. Option affects selected user, see the status bar. Reboot your PC to activate or deactivate this option. [Applicable to Windows NT/2000/XP/2003.](#)
- **Hide Phone/Modem Options in Control Panel** - Hides Phone/Modem Options control panel applet. Option affects selected user, see the status bar. Reboot your PC to activate or deactivate this option.

[Applicable to Windows NT/2000/XP/2003.](#)

- **Hide Date/Time in Control Panel** - Hides Date/Time control panel applet. Option affects selected user, see the status bar. Reboot your PC to activate or deactivate this option. [Applicable to Windows NT/2000/XP/2003.](#)
- **Hide Network Connections in Control Panel** - Hides Network Connections control panel applet. Option affects selected user, see the status bar. Reboot your PC to activate or deactivate this option. [Applicable to Windows NT/2000.](#)
- **Hide ODBC Administration in Control Panel** - Hides ODBC Administration control panel applet. Option affects selected user, see the status bar. Reboot your PC to activate or deactivate this option. [Applicable to Windows NT/2000/XP/2003.](#)
- **Hide Scanners/Cameras in Control Panel** - Hides Scanners/Cameras control panel applet. Option affects selected user, see the status bar. Reboot your PC to activate or deactivate this option. [Applicable to Windows NT/2000.](#)
- **Hide Faxes in Control Panel** - Hides Faxes control panel applet. Option affects selected user, see the status bar. Reboot your PC to activate or deactivate this option. [Applicable to Windows NT/2000.](#)
- **Hide Console in Control Panel** - Hides Console control panel applet. Option affects selected user, see the status bar. Reboot your PC to activate or deactivate this option. [Applicable to Windows NT/2000/XP/2003.](#)
- **Hide Infrared Port/Wireless Link in Control Panel** - Hides Infrared Port/Wireless Link control panel applet Option affects selected user, see the status bar. Reboot your PC to activate or deactivate this option. [Applicable to Windows NT/2000/XP/2003.](#)
- **Hide Licensing in Control Panel** - Hides Licensing control panel applet Option affects selected user, see the status bar. Reboot your PC to activate or deactivate this option. [Applicable to Windows NT/2000/XP/2003.](#)
- **Hide Mail in Control Panel** - Hides Mail control panel applet Option affects selected user, see the status bar. Reboot your PC to activate or deactivate this option. [Applicable to Windows NT/2000/XP/2003.](#)
- **Hide Netware Client in Control Panel** - Hides Netware Client control panel applet Option affects selected user, see the status bar. Reboot your PC to activate or deactivate this option. [Applicable to Windows NT/2000/XP/2003.](#)
- **Hide PC Card in Control Panel** - Hides PC Card control panel applet Option affects selected user, see the status bar. Reboot your PC to activate or deactivate this option. [Applicable to Windows NT/2000/XP/2003.](#)
- **Hide Ports in Control Panel** - Hides Ports control panel applet Option affects selected user, see the status bar. Reboot your PC to activate or deactivate this option. [Applicable to Windows NT/2000/XP/2003.](#)
- **Hide Server Manager in Control Panel** - Hides Server Manager control panel applet Option affects selected user, see the status bar. Reboot your PC to activate or deactivate this option. [Applicable to Windows NT/2000/XP/2003.](#)
- **Hide Speech Properties in Control Panel** - Hides Speech Properties control panel applet Option affects selected user, see the status bar. Reboot your PC to activate or deactivate this option. [Applicable to Windows NT/2000/XP/2003.](#)
- **Hide TweakUI in Control Panel** - Hides TweakUI control panel applet Option affects selected user, see the status bar. Reboot your PC to activate or deactivate this option. [Applicable to Windows NT/2000/XP/2003.](#)
- **Hide WSP Client in Control Panel** - Hides WSP Client control panel applet Option affects selected user, see the status bar. Reboot your PC to activate or deactivate this option. [Applicable to Windows NT/2000/XP/2003.](#)
- **Hide QuickTime in Control Panel** - Hides QuickTime control panel applet Option affects selected user, see the status bar. Reboot your PC to activate or deactivate this option. [Applicable to Windows NT/2000/XP/2003.](#)
- **Hide Norton Live Update in Control Panel** - Hides Norton Live Update control panel applet Option affects selected user, see the status bar. Reboot your PC to activate or deactivate this option. [Applicable to Windows NT/2000/XP/2003.](#)
- **Hide Compaq Insight Agents in Control Panel** - Hides Compaq Insight Agents control panel applet Option affects selected user, see the status bar. Reboot your PC to activate or deactivate this option.

[Applicable to Windows NT/2000/XP/2003.](#)

- **Hide Office Fast Find in Control Panel** - Hides the Office Fast Find control panel applet Option affects selected user, see the status bar. Reboot your PC to activate or deactivate this option. [Applicable to Windows NT/2000/XP/2003.](#)
- **Hide Real Player G2 in Control Panel** - Hides the Real Player G2 control panel applet Option affects selected user, see the status bar. Reboot your PC to activate or deactivate this option. [Applicable to Windows NT/2000/XP/2003.](#)
- **Hide Remote Access in Control Panel** - Hides the Remote Access control panel applet Option affects selected user, see the status bar. Reboot your PC to activate or deactivate this option. [Applicable to Windows NT/2000/XP/2003.](#)
- **Hide Desktop Themes in Control Panel** - Hides the Desktop Themes control panel applet Option affects selected user, see the status bar. Reboot your PC to activate or deactivate this option. [Applicable to Windows NT/2000/XP/2003.](#)
- **Hide Spare Power Supply in Control Panel** - Hides the Spare Power Supply control panel applet Option affects selected user, see the status bar. Reboot your PC to activate or deactivate this option. [Applicable to Windows NT/2000/XP/2003.](#)

See also:

- [Control Panel Security Restrictions.](#)
- [All restrictions.](#)
- [How to use.](#)
- [How to spy on your PC users.](#)
- [How to copy restrictions between users in the tree.](#)
- [How to Export/Import restrictions.](#)
- [How to lock your personal computer with a password.](#)
- [How to deny access to 1st Security Agent.](#)
- [About the program.](#)
- [Purpose of the program.](#)
- [User interface.](#)

Windows Explorer and Desktop Restrictions

The following restrictions are available in this group:

- **Hide Drives in My Computer** - This setting controls which drives are visible in 'My Computer', it is possible to hide all drives or just selected ones. This setting controls which drives are visible in 'My Computer', it is possible to hide all drives or just selected ones. Option affects selected user, see the status bar. Reboot your PC to activate or deactivate this option. [Applicable to Windows 95/98/ME/NT/2000/XP/2003.](#)
- **Prevent Access to the Contents of Selected Drives** - This restriction prevents users from using My Computer or Explorer to access the content of selected drives. Also, they cannot use Run, Map Network Drive, or the Dir command to view the directories on these drives. Option affects selected user, see the status bar. Reboot your PC to activate or deactivate this option. [Applicable to Windows ME/2000/XP/2003.](#)
- **Disable the Autorun feature on certain drives** - Determines whether the Autorun feature is enabled on each drive connected to the system. When Autorun is enabled, media is started automatically when it is inserted in the drive. Option affects selected user, see the status bar. Reboot your PC to activate or deactivate this option. [Applicable to Windows 95/98/ME/NT/2000/XP/2003.](#)
- **Disable Autoplay for Certain Drive Types** - This restriction allows you to disable the autoplay feature for selected below types of drives. If you select all types of drives in the list, you will disable the autoplay feature for all drives. The list below contains restricted drive types. Option affects selected user, see the status bar. Reboot your PC to activate or deactivate this option. [Applicable to Windows 95/98/ME/NT/2000/XP/2003.](#)
- **Allow Running Only Certain Applications** - Windows gives an ability to restrict the applications that can be run by users on a workstation. Define the applications that are allowed to be run in the list below. All not listed application will become disabled. The list below contains allowed applications. Option affects selected user, see the status bar. Reboot your PC to activate or deactivate this option. [Applicable to Windows 95/98/ME/NT/2000/XP/2003.](#)
- **Disallow Running Specific Applications** - This setting allows you to specify applications and filenames that users are restricted from running. Here you disable only listed applications leaving not listed applications allowed to be run. The list below contains restricted applications. Option affects selected user, see the status bar. Reboot your PC to activate or deactivate this option. [Applicable to Windows ME/2000/XP/2003.](#)
- **Remove Programs from the Add/Remove Programs List** - This restriction will remove selected programs from the Add/Remove Program List of the Control Panel installed by this user. To remove all other programs use "Remove Programs from the Add/Remove Programs List" and "Remove MSI Programs from the Add/Remove Programs List" restrictions located in the Common Restrictions. Check required programs to hide them. Option affects selected user, see the status bar. [Applicable to Windows 95/98/ME/NT/2000/XP/2003.](#)
- **Disable moving files to the Recycle Bin** - When you delete a file or folder with Windows Explorer, a copy of the file or folder is placed in the Recycle Bin. By turning this setting on you force Windows Explorer to permanently delete your files and folders. Option affects selected user, see the status bar. Reboot your PC to activate or deactivate this option. [Applicable to Windows XP/2003.](#)
- **Disable Changing the File Delete Confirmation** - This restriction lets you disable the checkbox in the Recycle Bin properties that lets you enable or disable the file delete confirmation. When this restriction is enabled, the checkbox is always checked and the user can not uncheck it. Option affects selected user, see the status bar. Reboot your PC to activate or deactivate this option. [Applicable to Windows XP/2003.](#)
- **Limit the Recycle Bin Size** - This restriction will limit the size of Recycle Bin. Below you can enter the maximum allowed size of Recycle Bin in percent from the total disk space. If you set it to zero, Recycle Bin will become disabled. Enter an integer number below. Option affects selected user, see the status bar. Reboot your PC to activate or deactivate this option. [Applicable to Windows XP/2003.](#)
- **Remove Shared Documents from My Computer** - The Shared Documents folder gives users an ability to easily share files and folders over a network. This restriction removes the Shared Documents folder from My Computer. Option affects selected user, see the status bar. Reboot your PC to activate or deactivate this option. [Applicable to Windows XP.](#)

- **Remove Properties from My Computer** - This restriction removes the properties option from My Computer and hides the System Properties screen. It also disables access to the System Properties. Option affects selected user, see the status bar. Reboot your PC to activate or deactivate this option. [Applicable to Windows 2000/XP/2003.](#)
- **Remove Properties from My Documents** - This restriction will disable the My Documents Properties command. Option affects selected user, see the status bar. Reboot your PC to activate or deactivate this option. [Applicable to Windows 2000/XP/2003.](#)
- **Disable the Recycle Bin Properties Option** - This restriction lets you restrict access to the Properties option on the Recycle Bin right-click context menu. Option affects selected user, see the status bar. Reboot your PC to activate or deactivate this option. [Applicable to Windows XP/2003.](#)
- **Hide Computer Management Option** - This restriction lets you remove the Manage item from the My Computer context menu. Option affects selected user, see the status bar. Reboot your PC to activate or deactivate this option. [Applicable to Windows 2000/XP/2003.](#)
- **Hide All Items on the Desktop** - Enabling this options hides all the items and programs on the Windows desktop. Option affects selected user, see the status bar. Reboot your PC to activate or deactivate this option. [Applicable to Windows 95/98/ME/NT/2000/XP/2003.](#)
- **Force Windows to Use the Classic Desktop** - This option disables the various enhanced features of the Windows shell which are included in newer releases of Windows and Internet Explorer. It will remove features including Active Desktop, Web view, thumbnail views and the quick launch toolbar. In Windows XP and higher, it disables the web content and tasks in Explorer and removes the "Desktop" item from Display Properties. Option affects selected user, see the status bar. Reboot your PC to activate or deactivate this option. [Applicable to Windows 95/98/ME/NT/2000/XP/2003.](#)
- **Force the Control Panel Display Style** - This setting forces the visual style of the Control Panel. Enabling this option you force the use of the classic or the new style and disallow the user to select the preferred style. Option affects selected user, see the status bar. Reboot your PC to activate or deactivate this option. [Applicable to Windows XP/2003.](#)
- **Hide the Control Panel** - This setting allows you to hide the Control Panel options from the Start Menu and deny access to it. Option affects selected user, see the status bar. Reboot your PC to activate or deactivate this option. [Applicable to Windows ME/2000/XP/2003.](#)
- **Force Using Classic Search in Explorer** - When enabled this option disables the new Search Assistant in Windows Explorer and offers using the traditional search interface. Option affects selected user, see the status bar. Reboot your PC to activate or deactivate this option. [Applicable to Windows XP/2003.](#)
- **Disable Web View Customization** - This restriction is used for disabling the ability to customize web view for folders. Option affects selected user, see the status bar. Reboot your PC to activate or deactivate this option. [Applicable to Windows 95/98/ME/NT/2000/XP/2003.](#)
- **Disable the Ctrl+Alt+Del, Alt+Tab and Ctrl+Esc keys** - This option allows you to stop users from being able to end tasks or switch between them using the Ctrl+Alt+Del, Alt+Tab and Ctrl+Esc key combinations. Option affects selected user, see the status bar. Reboot your PC to activate or deactivate this option. [Applicable to Windows 95/98/ME.](#)
- **Disable the ability to change desktop layout** - This setting lets you lock your desktop layout and prevent users from repositioning modifying, editing, deleting, creating or renaming desktop items. Right after activation of this option and reboot the current desktop will be saved and after each subsequent reboot all items on your desktop will be automatically rolled back to the original state. Note that if you have actual files on your desktop you modify from time to time, then they will be rolled back as well so please keep your necessary-to-modify files in any other folders and make shortcuts for them on your desktop before activating this option. The autoarrange option for your desktop must be turned off. We also recommend you to use the Disable View Context Menu restriction along with this option to prevent users from turning the desktop autoarrange on. If you do not use it, you will need to turn it off manually each time a user does it and reboot PC to return your desktop to its original state. Option affects selected user, see the status bar. Reboot your PC to activate or deactivate this option. [Applicable to Windows 95/98/ME/NT/2000/XP/2003.](#)
- **Disable the Drag and Drop feature in Windows** - This option disable the ability to drag and drop items and windows on the Desktop and in the Windows Explorer. This is very useful if you want to prevent your users from accidental moving and copying files and folders from within Windows and along with the Disable the ability to change desktop layout restriction provides a great security for

your desktop. Use this option if you are building a queuing system or a kiosk. Option affects selected user, see the status bar. Reboot your PC to activate or deactivate this option. [Applicable to Windows 95/98/ME/NT/2000/XP/2003.](#)

- **Disable View Context Menu** - Removes context menus from Desktop and Windows Explorer. While this restriction is turned on, a user can not open context menus for any items of Desktop and Windows Explorer using right mouse button or any other way. Option affects selected user, see the status bar. Reboot your PC to activate or deactivate this option. [Applicable to Windows 95/98/ME/NT/2000/XP/2003.](#)
- **Remove the File Menu from Explorer** - This option removes the File option from Explorer's toolbar. Option affects selected user, see the status bar. Reboot your PC to activate or deactivate this option. [Applicable to Windows 95/98/ME/NT/2000/XP/2003.](#)
- **Hide the Search Button from the Explorer Toolbar** - This option lets you remove the Search Button from the Standard Buttons toolbar of Windows Explorer. Option affects selected user, see the status bar. Reboot your PC to activate or deactivate this option. [Applicable to Windows 2000/XP/2003.](#)
- **Clear Recent Documents When Windows Exits** - This tweak will clear the list of recent documents on the Start Menu when Windows exits. Option affects selected user, see the status bar. Reboot your PC to activate or deactivate this option. [Applicable to Windows 95/98/ME/NT/2000/XP/2003.](#)
- **Disable the Windows Hotkeys** - This restriction allows you to disable the use of the Windows hotkey combinations that provide shortcuts to the Start Menu and task swapping. Option affects selected user, see the status bar. Reboot your PC to activate or deactivate this option. [Applicable to Windows 95/98/ME/NT/2000/XP/2003.](#)
- **Remove the Ability to Modify File Types** - This setting allows you to remove the ability to change, add or delete file types using explorer the Folder Options interface. Option affects selected user, see the status bar. Reboot your PC to activate or deactivate this option. [Applicable to Windows 2000/XP/2003.](#)
- **Remove the Distributed File System Tab** - This restriction removes the Distributed File System (DFS) tab from Windows explorer. This prevents users from viewing or changing the properties of local DFS shares. Option affects selected user, see the status bar. Reboot your PC to activate or deactivate this option. [Applicable to Windows 2000/XP/2003.](#)
- **Remove the Hardware Tab** - This restriction removes the hardware tab from applicable items in the Control Panel and from the local drive properties. This prevents users from changing the hardware device properties. Option affects selected user, see the status bar. Reboot your PC to activate or deactivate this option. [Applicable to Windows 2000/XP/2003.](#)
- **Remove the Security Tab** - This restriction removes the Security tab from Windows explorer which prevents users from accessing or changing the security permissions of folder and file objects. Option affects selected user, see the status bar. Reboot your PC to activate or deactivate this option. [Applicable to Windows XP/2003.](#)
- **Disable the ability to change the location of My Documents** - Disables the ability to change the location of My Documents. Option affects selected user, see the status bar. Reboot your PC to activate or deactivate this option. [Applicable to Windows ME/2000/XP/2003.](#)
- **Disable the ability to change the location of My Pictures** - Disables the ability to change the location of My Pictures. Option affects selected user, see the status bar. Reboot your PC to activate or deactivate this option. [Applicable to Windows ME/2000/XP/2003.](#)
- **Disable the ability to change the location of My Music** - Disables the ability to change the location of My Music. Option affects selected user, see the status bar. Reboot your PC to activate or deactivate this option. [Applicable to Windows ME/2000/XP/2003.](#)
- **Disable the ability to change the location of Favorites** - Disables the ability to change the location of Favorites. Option affects selected user, see the status bar. Reboot your PC to activate or deactivate this option. [Applicable to Windows ME/2000/XP/2003.](#)
- **Remove GoTo Option from the Explorer Menu** - This restriction is used to remove the GoTo item from Tools in Windows Explorer's main menu. Option affects selected user, see the status bar. Reboot your PC to activate or deactivate this option. [Applicable to Windows 95/NT.](#)
- **Disable Instrumentation for User Tracking** - This restriction stops Windows from recording user tracking information such as applications a user runs, files and documents are being accessed, and so on. Option affects selected user, see the status bar. Reboot your PC to activate or deactivate this option. [Applicable to Windows 95/98/ME/NT/2000/XP/2003.](#)

- **Remove Unread Mail Messages from Welcome Screen** - This restriction removes the message displaying the number of unread e-mail messages from the Windows Welcome screen. Option affects selected user, see the status bar. Reboot your PC to activate or deactivate this option. [Applicable to Windows XP/2003.](#)
- **Disable the Mouse Wheel Scrolling Feature** - This restriction disables the mouse wheel scrolling feature. Option affects selected user, see the status bar. Reboot your PC to activate or deactivate this option. [Applicable to Windows 95/98/ME/NT/2000/XP/2003.](#)
- **Disable Settings Wizards** - This restriction disables settings wizards. Option affects selected user, see the status bar. Reboot your PC to activate or deactivate this option. [Applicable to Windows 98/ME.](#)
- **Disable Tool Tip Displays** - This restriction allows you to remove tool tips from appearing when you move the mouse across the items that support display of tool tips. Option affects selected user, see the status bar. Reboot your PC to activate or deactivate this option. [Applicable to Windows 2000/XP/2003.](#)
- **Hide the Options Item in the View Menu of Windows Explorer** - Hide the Options Item in the View Menu of Windows Explorer Option affects selected user, see the status bar. Reboot your PC to activate or deactivate this option. [Applicable to Windows 95/NT.](#)
- **Hide the Customize Tab from Folder Properties** - This restriction lets you hide the Customize tab from folder properties. Option affects selected user, see the status bar. Reboot your PC to activate or deactivate this option. [Applicable to Windows XP/2003.](#)
- **Disable Web View Switching in Folder Options** - This restriction lets you disable switching between Web View and Classic View in Folder Options. Option affects selected user, see the status bar. Reboot your PC to activate or deactivate this option. [Applicable to Windows ME/2000/XP/2003.](#)
- **Hide the Super Hidden Files in Windows Explorer** - If this restriction is enabled, the ability to view the files marked System and Hidden (super-hidden files) will be disabled. Applications should not show files that have both the FILE_ATTRIBUTE_SYSTEM and FILE_ATTRIBUTE_HIDDEN attributes to the user. Option affects selected user, see the status bar. Reboot your PC to activate or deactivate this option. [Applicable to Windows ME/2000/XP/2003.](#)
- **Disable the Online Prints Wizard** - This restriction will disable the Online Prints wizard. Option affects selected user, see the status bar. Reboot your PC to activate or deactivate this option. [Applicable to Windows XP/2003.](#)
- **Disable Publishing Wizard** - This restriction lets you disable Publishing Wizard. Option affects selected user, see the status bar. Reboot your PC to activate or deactivate this option. [Applicable to Windows XP/2003.](#)
- **Remove Access to Use All Windows Update Features** - This restriction will remove access to use all Windows update features. When this restriction is enabled, and the user opens the Automatic Updates tab in My Computer Property sheet, or from the Control Panel, all of the Automatic Updates configuration options will be grayed out. Option affects selected user, see the status bar. Reboot your PC to activate or deactivate this option. [Applicable to Windows XP/2003.](#)

See also:

- [All restrictions.](#)
- [How to use.](#)
- [How to spy on your PC users.](#)
- [How to copy restrictions between users in the tree.](#)
- [How to Export/Import restrictions.](#)
- [How to lock your personal computer with a password.](#)
- [How to deny access to 1st Security Agent.](#)
- [About the program.](#)
- [Purpose of the program.](#)
- [User interface.](#)

Start Menu Security Restrictions

The following restrictions are available in this group:

- **Remove the Run Command from the Start Menu** - Removes the user's ability to start applications or processes from the Start menu by removing the option completely. Option affects selected user, see the status bar. Reboot your PC to activate or deactivate this option. [Applicable to Windows 95/98/ME/NT/2000/XP/2003.](#)
- **Hide the Taskbar Settings on the Start Menu** - This restriction removes the Taskbar and Start Menu item from the Control Panel, and it also removes the Properties item from the Start menu context menu. Removing the all subitems of the Settings menu causes the Settings menu to be removed completely. Option affects selected user, see the status bar. Reboot your PC to activate or deactivate this option. [Applicable to Windows 95/98/ME/NT/2000/XP/2003.](#)
- **Remove Set Program Access and Defaults from Start Menu** - This option is used to remove the "Set Program Access and Defaults" icon from the Start Menu. This feature was introduced with Windows XP SP1 and Windows 2000 SP3 to allow users to configure the default applications used on the PC. Option affects selected user, see the status bar. Reboot your PC to activate or deactivate this option. [Applicable to Windows 2000/XP/2003.](#)
- **Remove the Recent Documents Folder from the Start Menu** - This key will remove the Recent Documents folder from the Start Menu. Option affects selected user, see the status bar. Reboot your PC to activate or deactivate this option. [Applicable to Windows 95/98/ME/NT/2000/XP/2003.](#)
- **Remove My Pictures from Documents on the Start Menu** - This tweak hides 'My Pictures' which is shown under the Documents folder on the Start Menu. Option affects selected user, see the status bar. Reboot your PC to activate or deactivate this option. [Applicable to Windows 95/98/ME/NT/2000/XP/2003.](#)
- **Remove My Music from the Start Menu** - This restriction removes My Music from the Documents folder on the Start Menu. Option affects selected user, see the status bar. Reboot your PC to activate or deactivate this option. [Applicable to Windows 95/98/ME/NT/2000/XP/2003.](#)
- **Remove My Documents from Documents on the Start Menu** - This tweak hides 'My Documents' which is shown under the Documents folder on the Start Menu. Option affects selected user, see the status bar. Reboot your PC to activate or deactivate this option. [Applicable to Windows 95/98/ME/NT/2000/XP/2003.](#)
- **Remove My Network Places from the Start Menu** - This restriction hides the My Network Places button on the simple Start menu. Option affects selected user, see the status bar. Reboot your PC to activate or deactivate this option. [Applicable to Windows XP/2003.](#)
- **Remove the Favorites Folder from the Start Menu** - Removes the Favorites folder from the Start menu of the computer. Option affects selected user, see the status bar. Reboot your PC to activate or deactivate this option. [Applicable to Windows 95/98/ME/NT/2000/XP/2003.](#)
- **Remove the Help Option from the Start Menu** - This tweak hides the Help option on the Start Menu. Option affects selected user, see the status bar. Reboot your PC to activate or deactivate this option. [Applicable to Windows ME/2000/XP/2003.](#)
- **Hide Network and Dial-up Connections on Start Menu** - This tweak allows you to hide the Network and Dial-up Connections option on the Start Menu and in Control Panel. Option affects selected user, see the status bar. Reboot your PC to activate or deactivate this option. [Applicable to Windows ME/NT/2000/XP/2003.](#)
- **Remove Common Program Groups from Start menu** - Disables the display of common groups when the user selects Programs from the Start menu. It also hides Open All Users and Explore All Users items in Start Menu context menu. Option affects selected user, see the status bar. Reboot your PC to activate or deactivate this option. [Applicable to Windows 95/98/ME/NT/2000/XP/2003.](#)
- **Remove the Active Desktop from Settings on the Start Menu** - Enabling this option, removes the Active Desktop option from Settings on the Start Menu, therefore stopping users from playing with desktop styles. Removing the all subitems of the Settings menu causes the Settings menu to be removed completely. Option affects selected user, see the status bar. Reboot your PC to activate or deactivate this option. [Applicable to Windows 95/98/ME/NT.](#)
- **Remove the Find/Search Command From the Start Menu** - When enabled, this setting removes the 'Find/Search' command from the Start Menu. Option affects selected user, see the status bar.

Reboot your PC to activate or deactivate this option. [Applicable to Windows 95/98/ME/NT/2000/XP/2003.](#)

- **Remove the Windows Update from Settings on the Start Menu** - Enabling this option, removes the Windows Update option from Settings on the Start Menu, therefore stopping users from unwanted updating your Windows. Removing the all subitems of the Settings menu causes the Settings menu to be removed completely. Option affects selected user, see the status bar. Reboot your PC to activate or deactivate this option. [Applicable to Windows 95/98/ME/NT/2000/XP/2003.](#)
- **Remove Folder Options from Settings on the Start Menu** - Enabling this option, removes the Folder Options option from Settings on the Start Menu, therefore stopping users from changing folder options. Removing the all subitems of the Settings menu causes the Settings menu to be removed completely. Option affects selected user, see the status bar. Reboot your PC to activate or deactivate this option. [Applicable to Windows 95/98/ME/NT/2000/XP/2003.](#)
- **Disable Drag-and-Drop and Context Menu on Start Menu** - Removes context menu from Start Menu. While this restriction is turned on, a user can not open Start Menu context menu using right mouse button for an item of the menu. This restriction also prevents users from modifying the Start menu by dragging and dropping items. Option affects selected user, see the status bar. Reboot your PC to activate or deactivate this option. [Applicable to Windows 95/98/ME/NT/2000/XP/2003.](#)
- **Don't Add Recent Files to Documents on the Start Menu** - Normally when you open or access a document or file it is added to the list of recent documents on the Start Menu. This tweak will stop files from being added to the list. Option affects selected user, see the status bar. Reboot your PC to activate or deactivate this option. [Applicable to Windows 95/98/ME/NT/2000/XP/2003.](#)
- **Remove Frequent Program List from the Start Menu** - This restriction lets you remove the list of frequently used programs from the Start menu. This setting applies only to the simple Start Menu available in Windows XP and higher, not to the Classic one. Option affects selected user, see the status bar. Reboot your PC to activate or deactivate this option. [Applicable to Windows XP/2003.](#)
- **Remove Pinned Programs List from the Start Menu** - This restriction lets you remove the pinned programs list from the Start menu. It also removes the Internet and E-mail icons from the Start menu. This setting applies only to the simple Start Menu available in Windows XP and higher, not to the Classic one. Option affects selected user, see the status bar. Reboot your PC to activate or deactivate this option. [Applicable to Windows XP/2003.](#)
- **Remove Username from the Start Menu** - This restriction lets you hide the current username normally displayed at the top part of the Windows XP Start Menu. This setting applies only to the simple Start Menu available in Windows XP and higher, not to the Classic one. Option affects selected user, see the status bar. Reboot your PC to activate or deactivate this option. [Applicable to Windows XP/2003.](#)
- **Remove All Programs Button from the Start Menu** - This restriction lets you remove the All Programs button which displays a list of all installed applications from the Start Menu. This setting applies only to the simple Start Menu available in Windows XP and higher, not to the Classic one. Option affects selected user, see the status bar. Reboot your PC to activate or deactivate this option. [Applicable to Windows XP/2003.](#)
- **Remove Undock Computer from Start Menu** - This option is used to remove the Undock Computer option from the Start Menu. This option is displayed for portable computers with docking stations only. Option affects selected user, see the status bar. Reboot your PC to activate or deactivate this option. [Applicable to Windows XP/2003.](#)
- **Force the Use of the Classic Start Menu** - This restriction forces users to use the classic Windows start menu, instead of the new format introduced with Windows XP. Option affects selected user, see the status bar. Reboot your PC to activate or deactivate this option. [Applicable to Windows XP/2003.](#)
- **Force Logoff on the Start Menu** - This setting forces the Logoff button to appear on the Start menu and prevents users from removing or hiding it. Option affects selected user, see the status bar. Reboot your PC to activate or deactivate this option. [Applicable to Windows ME/2000/XP/2003.](#)
- **Restrict the Start Menu Log Off Option** - This restriction removes the ability for a user to enable the "Log Off..." option on the Start Menu. Option affects selected user, see the status bar. Reboot your PC to activate or deactivate this option. [Applicable to Windows ME/2000/XP/2003.](#)
- **Disable Highlighting New Programs on Start Menu** - When you install a new Windows program the icon will be highlighted on the Start Menu to allow you to quickly locate it. This tweak controls whether new programs should be highlighted. Option affects selected user, see the status bar. This

only effects the Enhanced Windows XP Start Menu, it will not effect the "Classic" version. Reboot your PC to activate or deactivate this option. [Applicable to Windows XP/2003.](#)

- **Hide Start Menu Subfolders** - This setting can be used to hide any custom sub-folders from being shown in the top section of the Start Menu and therefore only displaying direct file shortcuts. Option affects selected user, see the status bar. Reboot your PC to activate or deactivate this option. [Applicable to Windows 95/98/ME/NT/2000/XP/2003.](#)
- **Remove the Disconnect Menu Item** - This setting is used to hide the Disconnect menu item on a terminal server Start menu. Option affects selected user, see the status bar. Reboot your PC to activate or deactivate this option. [Applicable to Windows 2000/XP/2003.](#)
- **Remove Windows Security from Start Menu** - This restriction hides the Windows NT Security menu item on the Start Menu of a terminal server session. Option affects selected user, see the status bar. Reboot your PC to activate or deactivate this option. [Applicable to Windows NT/2000/XP/2003.](#)
- **Hide Control Panel, Printer and Network Settings** - This restriction removes the Control Panel, Printers and Network Connection settings from the Start menu. If the Taskbar settings are also hidden it causes the Settings menu to be completely removed. Option affects selected user, see the status bar. Reboot your PC to activate or deactivate this option. [Applicable to Windows 95/98/ME/NT/2000/XP/2003.](#)
- **Gray Unavailable Windows Installer Programs Start Menu Shortcuts** - When this restriction is enabled, shortcuts to partially-installed programs appear in gray text what makes it easier for users to distinguish between programs that are fully installed and those that are only partially installed. Partially installed programs include those that a system administrator assigns using Windows Installer and those that users have configured for full installation upon first use. Option affects selected user, see the status bar. Reboot your PC to activate or deactivate this option. [Applicable to Windows 2000/XP/2003.](#)
- **Remove the Personalized Menus option** - Personalized Menus is the feature that remembers which items you use regularly on the Start Menu and hides less used items. This restriction lets you removes the Use Personalized Menus option from the Start menu options and enable or disable the feature. Option affects selected user, see the status bar. Reboot your PC to activate or deactivate this option. [Applicable to Windows ME/2000/XP/2003.](#)
- **Force Maximum Number of Recent Documents** - This restriction lets you force maximum number of recent documents stored in the Recent Documents folder. It also determines how many shortcuts the system can display in the Recent Documents menu on the Start menu. Enter an integer number below. Option affects selected user, see the status bar. Reboot your PC to activate or deactivate this option. [Applicable to Windows ME/2000/XP/2003.](#)

See also:

- [All restrictions.](#)
- [How to use.](#)
- [How to spy on your PC users.](#)
- [How to copy restrictions between users in the tree.](#)
- [How to Export/Import restrictions.](#)
- [How to lock your personal computer with a password.](#)
- [How to deny access to 1st Security Agent.](#)
- [About the program.](#)
- [Purpose of the program.](#)
- [User interface.](#)

Taskbar and System Tray Security Restrictions

The following restrictions are available in this group:

- **Disable Taskbar Balloon Tips** - Sometimes Windows shows tips advices and warnings to users by opening balloon windows from the taskbar. The feature can be disabled by using this setting. Option affects selected user, see the status bar. Reboot your PC to activate or deactivate this option. [Applicable to Windows XP/2003.](#)
- **Disable Tray Context Menu** - Removes context menu from Task Bar and System Tray Bar. While this restriction is turned on, a user can not open Task Bar and System Tray Bar context menu using right mouse button or any other way. Option affects selected user, see the status bar. Reboot your PC to activate or deactivate this option. [Applicable to Windows 95/98/ME/NT/2000/XP/2003.](#)
- **Remove Tray Items from Taskbar** - This setting removes and restricts access to the tray icons normally found next to the clock on the taskbar. Option affects selected user, see the status bar. Reboot your PC to activate or deactivate this option. [Applicable to Windows XP/2003.](#)
- **Turn Off Notification Area Cleanup** - This setting effects the notification area, also called the System Tray. The notification area is located in the task bar, generally at the bottom of the screen, and it includes the clock and current notifications. This setting determines whether the items are always expanded or always collapsed. By default, notifications are collapsed. The notification cleanup << icon can be referred to as the Notification Chevron. This restriction will cause the notification area to show all of the notifications that use this area. Option affects selected user, see the status bar. Reboot your PC to activate or deactivate this option. [Applicable to Windows XP/2003.](#)
- **Lock the Taskbar** - This restriction is used to force the locking of the taskbar and restrict users from making any changes to its position. Option affects selected user, see the status bar. Reboot your PC to activate or deactivate this option. [Applicable to Windows XP/2003.](#)
- **Hide the Taskbar Clock** - This setting allows you to remove the clock from the system tray on the taskbar. Option affects selected user, see the status bar. Reboot your PC to activate or deactivate this option. [Applicable to Windows XP/2003.](#)
- **Remove the Toolbars on the Taskbar** - This restriction is used to remove all the toolbars, including Quick Launch, from the taskbar. It also restricts the ability to re-enable them. Option affects selected user, see the status bar. Reboot your PC to activate or deactivate this option. [Applicable to Windows XP/2003.](#)
- **Hide the Task Bar and System Tray** - This option allows you to hide the Task Bar and System Tray so that users will be unable to use system tray and switch between tasks using the Task Bar. Option affects selected user, see the status bar. Reboot your PC to activate or deactivate this option. [Applicable to Windows 95/98/ME.](#)
- **Remove the Start Banner on the Taskbar** - Hide the bouncing arrow and the "Click Here to Begin" caption that appear on the taskbar when you start Windows. Option affects selected user, see the status bar. This option will remove the banner if it exists on your Windows. Reboot your PC to activate or deactivate this option. [Applicable to Windows 95/98/ME/NT/2000/XP/2003.](#)
- **Prevent Grouping of Taskbar Items** - Taskbar grouping consolidates similar applications when there is no room on the taskbar. It kicks in when the user taskbar is full. This restriction will prevent the taskbar from grouping items that share the same program name. It will also prevent the user from enabling this feature. Option affects selected user, see the status bar. Reboot your PC to activate or deactivate this option. [Applicable to Windows XP/2003.](#)

See also:

- [All restrictions.](#)
- [How to use.](#)
- [How to spy on your PC users.](#)
- [How to copy restrictions between users in the tree.](#)
- [How to Export/Import restrictions.](#)
- [How to lock your personal computer with a password.](#)
- [How to deny access to 1st Security Agent.](#)
- [About the program.](#)
- [Purpose of the program.](#)

- User interface.

Common Dialog Boxes Security Restrictions

The following restrictions are available in this group:

- **Hide Places Bar in Open and Save Dialog Box** - Hides Places Bar in Open and Save Dialog Box
Option affects selected user, see the status bar. Reboot your PC to activate or deactivate this option.
[Applicable to Windows ME/2000/XP/2003.](#)
- **Hide Back Button in Open and Save Dialog Box** - Hides Back Button in Open and Save Dialog Box
Option affects selected user, see the status bar. Reboot your PC to activate or deactivate this option.
[Applicable to Windows ME/2000/XP/2003.](#)
- **Hide MRU List in Open and Save Dialog Box** - Hides MRU List in Open and Save Dialog Box
Option affects selected user, see the status bar. Reboot your PC to activate or deactivate this option.
[Applicable to Windows ME/2000/XP/2003.](#)

See also:

- [All restrictions.](#)
- [How to use.](#)
- [How to spy on your PC users.](#)
- [How to copy restrictions between users in the tree.](#)
- [How to Export/Import restrictions.](#)
- [How to lock your personal computer with a password.](#)
- [How to deny access to 1st Security Agent.](#)
- [About the program.](#)
- [Purpose of the program.](#)
- [User interface.](#)

Active Desktop Security Restrictions

The following restrictions are available in this group:

- **Disable Active Desktop** - This tweak will disable the use of the Active Desktop feature. Option affects selected user, see the status bar. Reboot your PC to activate or deactivate this option. [Applicable to Windows 95/98/ME/NT/2000/XP/2003.](#)
- **Disable Changing Wallpaper in Display Properties** - This option allows you to stop users from being able to change wallpaper from the Display Properties dialog box. It will be still possible to change wallpaper from other Windows programs, and if you need to stop changing your wallpaper completely, use the Force the Background Image and Wallpaper Style restriction in the Control Panel - Display group along with this option. Option affects selected user, see the status bar. Reboot your PC to activate or deactivate this option. [Applicable to Windows 95/98/ME/NT/2000/XP/2003.](#)
- **Disable Using Web Components** - This option disables using any web components such as HTML pages as wallpaper. Option affects selected user, see the status bar. Reboot your PC to activate or deactivate this option. [Applicable to Windows 95/98/ME/NT/2000/XP/2003.](#)
- **Disable the Ability to Add Web Components** - Disables the ability to add web components. Option affects selected user, see the status bar. Reboot your PC to activate or deactivate this option. [Applicable to Windows 95/98/ME/NT/2000/XP/2003.](#)
- **Disable the Ability to Delete Web Components** - Disables the ability to delete web components. Option affects selected user, see the status bar. Reboot your PC to activate or deactivate this option. [Applicable to Windows 95/98/ME/NT/2000/XP/2003.](#)
- **Disable the Ability to Edit Web Components** - Disables the ability to edit web components. Option affects selected user, see the status bar. Reboot your PC to activate or deactivate this option. [Applicable to Windows 95/98/ME/NT/2000/XP/2003.](#)
- **Disable Closing DragDrop Bands** - Disables closing dragdrop bands. Option affects selected user, see the status bar. Reboot your PC to activate or deactivate this option. [Applicable to Windows 95/98/ME/NT/2000/XP/2003.](#)
- **Disable Moving DragDrop Bands** - Disables moving dragdrop bands. Option affects selected user, see the status bar. Reboot your PC to activate or deactivate this option. [Applicable to Windows 95/98/ME/NT/2000/XP/2003.](#)
- **Disallow using HTML pages as Wallpaper** - Use this option to disable using HTML pages as desktop wallpaper. Option affects selected user, see the status bar. Reboot your PC to activate or deactivate this option. [Applicable to Windows 95/98/ME/NT/2000/XP/2003.](#)
- **Restrict Users from Changing Active Desktop Settings** - This restriction prevents users from changing the active desktop settings allowing to have it enabled though. Option affects selected user, see the status bar. Reboot your PC to activate or deactivate this option. [Applicable to Windows 95/98/ME/NT/2000/XP/2003.](#)
- **Force the Use of Active Desktop** - The user is normally given the option of disabling Active Desktop through the display properties. This tweak removes the ability to disable Active Desktop. Option affects selected user, see the status bar. Reboot your PC to activate or deactivate this option. [Applicable to Windows 95/98/ME/NT/2000/XP/2003.](#)

See also:

- [All restrictions.](#)
- [How to use.](#)
- [How to spy on your PC users.](#)
- [How to copy restrictions between users in the tree.](#)
- [How to Export/Import restrictions.](#)
- [How to lock your personal computer with a password.](#)
- [How to deny access to 1st Security Agent.](#)
- [About the program.](#)
- [Purpose of the program.](#)
- [User interface.](#)

Internet Security Restrictions

The following restrictions are available in this group:

- **Disable Internet Access for Windows Applications** - By using this option you can restrict access to the Internet when using Internet Explorer and other Microsoft compatible products such as Microsoft Office. To stop users from modifying the Internet settings enable the "Disable the Internet Connection Wizard" and the "Disable Changing Connections" restrictions in the User Restrictions->Control Panel->Internet Options. Option affects selected user, see the status bar. Reboot your PC to activate or deactivate this option. [Applicable to Windows 95/98/ME/NT/2000/XP/2003.](#)
- **Disable Downloading of Web Service Wizards** - This restriction lets you prevent Internet download for Web Publishing and Online Ordering wizards. Option affects selected user, see the status bar. Reboot your PC to activate or deactivate this option. [Applicable to Windows XP/2003.](#)
- **Disable Access to File URLs in Internet Explorer** - Normally you can use the Internet Explorer address bar to access standard files and folders. This setting disables that functionality and only allows access to Internet URLs. The "Remove the Run Command from the Start Menu" option must be turned on as well to activate this restriction (See the Start Menu section). Option affects selected user, see the status bar. Reboot your PC to activate or deactivate this option. [Applicable to Windows 95/98/ME/NT/2000/XP/2003.](#)
- **Disable the Internet Explorer HTML Source Editor Check** - Internet Explorer will normally attempt to detect the program originally used to create a HTML document and modify the "Edit" option to use the same program for future editing. This option can be used to disable the checking. Option affects selected user, see the status bar. [Applicable to Windows 95/98/ME/NT/2000/XP/2003.](#)
- **Disable the Internet Explorer Splash Screen** - When this setting is enabled the splash screen will not be shown when Internet Explorer is started. If your Internet Explorer does not show the splash screen, this options will not affect your Internet Explorer. Option affects selected user, see the status bar. [Applicable to Windows 95/98/ME/NT/2000/XP/2003.](#)
- **Disable Showing My Pictures Toolbar in Internet Explorer** - When displaying an image in Internet Explorer a floating toolbar is shown that allows you to Save, Print, E-mail or Open the My Pictures folder. This setting allows you to hide the toolbar. Option affects selected user, see the status bar. [Applicable to Windows 95/98/ME/NT/2000/XP/2003.](#)
- **Disable the Go Button in Internet Explorer** - This setting is used to remove the "Go" button from the Internet Explorer toolbar. Option affects selected user, see the status bar. [Applicable to Windows 95/98/ME/NT/2000/XP/2003.](#)
- **Disable Internet Explorer Download Notification** - This setting is used to disable download completion notification in Internet Explorer. Option affects selected user, see the status bar. Reboot your PC to activate or deactivate this option. [Applicable to Windows 95/98/ME/NT/2000/XP/2003.](#)
- **Disable File Download in Internet Explorer** - This setting allows you to restrict the ability to download files using Internet Explorer. Option affects selected user, see the status bar. Reboot your PC to activate or deactivate this option. [Applicable to Windows 95/98/ME/NT/2000/XP/2003.](#)
- **Empty Temporary Internet Files on Exit** - This setting controls whether Internet Explorer should delete all of the temporary Internet files stored during the session when the browser is closed. Option affects selected user, see the status bar. Reboot your PC to activate or deactivate this option. [Applicable to Windows 95/98/ME/NT/2000/XP/2003.](#)
- **Hide the Internet Explorer Icon from the Desktop** - This option hides the Internet Explorer icon from the Windows desktop. Option affects selected user, see the status bar. Reboot your PC to activate or deactivate this option. [Applicable to Windows 95/98/ME/NT/2000/XP/2003.](#)
- **Disable DialUp Internet Connection** - This option disables DialUp Internet Connection (by modem, for example). Option affects selected user, see the status bar. Reboot your PC to activate or deactivate this option. [Applicable to Windows 95/98/ME.](#)
- **Disable Tools - Internet Options in Internet Explorer** - Disables the Tools - Internet Options menu item in Internet Explorer. Option affects selected user, see the status bar. Reboot your PC to activate or deactivate this option. [Applicable to Windows 95/98/ME/NT/2000/XP/2003.](#)
- **Disable Form Autocomplete** - Disables the function of autocompleting of forms in Internet Explorer. Option affects selected user, see the status bar. Reboot your PC to activate or deactivate this option. [Applicable to Windows 95/98/ME/NT/2000/XP/2003.](#)

- **Disable Password Autocomplete** - Disables the function of autocompleting of passwords in Internet Explorer. Option affects selected user, see the status bar. Reboot your PC to activate or deactivate this option. [Applicable to Windows 95/98/ME/NT/2000/XP/2003.](#)
- **Disable Closing Internet Explorer** - Disables the option of closing Internet Explorer. Option affects selected user, see the status bar. Reboot your PC to activate or deactivate this option. [Applicable to Windows 95/98/ME/NT/2000/XP/2003.](#)
- **Disable RightClick Context Menu** - Disables the right-click context menu in Internet Explorer. Option affects selected user, see the status bar. Reboot your PC to activate or deactivate this option. [Applicable to Windows 95/98/ME/NT/2000/XP/2003.](#)
- **Disable Save As** - Disables the ability to do Save As operation in Internet Explorer. Option affects selected user, see the status bar. Reboot your PC to activate or deactivate this option. [Applicable to Windows 95/98/ME/NT/2000/XP/2003.](#)
- **Disable Favorites** - Disables the Favorites in Internet Explorer. Option affects selected user, see the status bar. Reboot your PC to activate or deactivate this option. [Applicable to Windows 95/98/ME/NT/2000/XP/2003.](#)
- **Disable File - New Command** - Disables the File - New command in Internet Explorer. Option affects selected user, see the status bar. Reboot your PC to activate or deactivate this option. [Applicable to Windows 95/98/ME/NT/2000/XP/2003.](#)
- **Disable File - Open Command** - Disables the File - Open command in Internet Explorer. Option affects selected user, see the status bar. Reboot your PC to activate or deactivate this option. [Applicable to Windows 95/98/ME/NT/2000/XP/2003.](#)
- **Disable Find Files Command** - Disables the Find Files command in Internet Explorer. Option affects selected user, see the status bar. Reboot your PC to activate or deactivate this option. [Applicable to Windows 95/98/ME/NT/2000/XP/2003.](#)
- **Disable Selecting Download Directory** - Disables the option of selecting a download directory in Internet Explorer. Option affects selected user, see the status bar. Reboot your PC to activate or deactivate this option. [Applicable to Windows 95/98/ME/NT/2000/XP/2003.](#)
- **Disable Full Screen View Option** - Disables the Full Screen view option in Internet Explorer. Option affects selected user, see the status bar. Reboot your PC to activate or deactivate this option. [Applicable to Windows 95/98/ME/NT/2000/XP/2003.](#)
- **Disable Open in New Window option** - Disables Open in New Window option. Option affects selected user, see the status bar. Reboot your PC to activate or deactivate this option. [Applicable to Windows 95/98/ME/NT/2000/XP/2003.](#)
- **Disable View - Source Menu Item** - Disables the View - Source menu item in Internet Explorer. Option affects selected user, see the status bar. Reboot your PC to activate or deactivate this option. [Applicable to Windows 95/98/ME/NT/2000/XP/2003.](#)
- **Disable Navigation Buttons** - Disables the navigation buttons in Internet Explorer. Option affects selected user, see the status bar. Reboot your PC to activate or deactivate this option. [Applicable to Windows 95/98/ME/NT/2000/XP/2003.](#)
- **Remove Print and Print Preview from the File menu** - Removes Print and Print Preview from the File menu. [Applicable to Windows 95/98/ME/NT/2000/XP/2003.](#)
- **Hide Mail Button On ToolBar** - Hides Mail button on ToolBar in Internet Explorer. Also, disables Tools->Mail and News. Option affects selected user, see the status bar. Reboot your PC to activate or deactivate this option. [Applicable to Windows 95/98/ME/NT/2000/XP/2003.](#)
- **Remove the Option to Change or Hide Toolbars** - By default users are able to select which toolbars are displayed either be right clicking the toolbar itself, or by changing the options from the View menu. This tweak locks the toolbars, removing the ability to change which are displayed. Option affects selected user, see the status bar. Reboot your PC to activate or deactivate this option. [Applicable to Windows 95/98/ME/NT/2000/XP/2003.](#)
- **Disable the ability to change toolbar selection** - Disables the ability to change toolbar selection. Option affects selected user, see the status bar. Reboot your PC to activate or deactivate this option. [Applicable to Windows 95/98/ME/NT/2000/XP/2003.](#)
- **Disable the Ability to Customize Toolbars** - By right clicking on a toolbar you are usually given the option to Customize, which allows you to change which functions are available from the toolbar. This tweak allows you to disable that function. Option affects selected user, see the status bar. Reboot your PC to activate or deactivate this option. [Applicable to Windows 95/98/ME/NT/2000/XP/2003.](#)

- **Disable Tool Bar** - Disables Tool Bar in Internet Explorer. Option affects selected user, see the status bar. Reboot your PC to activate or deactivate this option. [Applicable to Windows 95/98/ME/NT/2000/XP/2003.](#)
- **Disable Address Bar** - Disables the address bar in Internet Explorer. Option affects selected user, see the status bar. Reboot your PC to activate or deactivate this option. [Applicable to Windows 95/98/ME/NT/2000/XP/2003.](#)
- **Disable Links Bar** - Disables Links Bar in Internet Explorer. Option affects selected user, see the status bar. Reboot your PC to activate or deactivate this option. [Applicable to Windows 95/98/ME/NT/2000/XP/2003.](#)
- **Disable Entire Help Menu** - Disables the entire Help menu in Internet Explorer. Option affects selected user, see the status bar. Reboot your PC to activate or deactivate this option. [Applicable to Windows 95/98/ME/NT/2000/XP/2003.](#)
- **Remove ForNetscapeUsers menu item** - Removes ForNetscapeUsers menu item of Help menu in Internet Explorer. Option affects selected user, see the status bar. Reboot your PC to activate or deactivate this option. [Applicable to Windows 95/98/ME/NT/2000/XP/2003.](#)
- **Remove SendFeedback menu item** - Removes SendFeedback menu item of Help menu in Internet Explorer. Option affects selected user, see the status bar. Reboot your PC to activate or deactivate this option. [Applicable to Windows 95/98/ME/NT/2000/XP/2003.](#)
- **Remove TipOfTheDay menu item** - Removes TipOfTheDay menu item of Help menu in Internet Explorer. Option affects selected user, see the status bar. Reboot your PC to activate or deactivate this option. [Applicable to Windows 95/98/ME/NT/2000/XP/2003.](#)
- **Remove Tour menu item** - Removes Tour menu item of Help menu in Internet Explorer. Option affects selected user, see the status bar. Reboot your PC to activate or deactivate this option. [Applicable to Windows 95/98/ME/NT/2000.](#)
- **Disable Search Customization** - Disables Customize button in Search panel of Internet Explorer. Option affects selected user, see the status bar. Reboot your PC to activate or deactivate this option. [Applicable to Windows 95/98/ME/NT/2000/XP/2003.](#)
- **Disable Web Pages Complete Saving** - Disables the ability to save web pages completely in Internet Explorer. Option affects selected user, see the status bar. Reboot your PC to activate or deactivate this option. [Applicable to Windows 95/98/ME/NT/2000/XP/2003.](#)
- **Disable Expanding Internet Explorer New Menu** - Usually when you click on the New menu in Internet Explorer it is expanded to include options like New Window, Message, Post and Internet Call. Using this tweak will stop the menu expanding and therefore only display the "New Window" option. Option affects selected user, see the status bar. Reboot your PC to activate or deactivate this option. [Applicable to Windows 95/98/ME/NT/2000/XP/2003.](#)
- **Disable Caching of Secure Web Pages** - This setting controls whether web pages encrypted using Secure Sockets Layer (SSL) should be stored on the hard disk in the temporary Internet cache. Option affects selected user, see the status bar. Reboot your PC to activate or deactivate this option. [Applicable to Windows 95/98/ME/NT/2000/XP/2003.](#)
- **Disable changes to browsers bars** - Disables changes to browsers bars. Option affects selected user, see the status bar. Reboot your PC to activate or deactivate this option. [Applicable to Windows 95/98/ME/NT/2000/XP/2003.](#)
- **Always prompt user when downloading files** - Always prompts user when downloading files. Option affects selected user, see the status bar. Reboot your PC to activate or deactivate this option. [Applicable to Windows 95/98/ME/NT/2000/XP/2003.](#)
- **Disable the Custom Search Page in Internet Explorer** - This setting lets you disable the use of the custom search page in Internet Explorer web browser. Option affects selected user, see the status bar. Reboot your PC to activate or deactivate this option. [Applicable to Windows 95/98/ME/NT/2000/XP/2003.](#)
- **Disable Import and Export feature in Internet Explorer** - This restriction is used to disable the ability of importing and exporting of Internet Explorer cookies and favorites. When users use the Import and Export wizard from the File menu item they will get a message after clicking "Finish" that they are restricted in doing it. Option affects selected user, see the status bar. Reboot your PC to activate or deactivate this option. [Applicable to Windows 95/98/ME/NT/2000/XP/2003.](#)
- **Disable Password Caching in Internet Explorer** - When you try to open a password-protected web site, you are normally prompted to enter your username and password with an option to "Save this

password...". This restriction disables the ability of users to save passwords. Option affects selected user, see the status bar. Reboot your PC to activate or deactivate this option. [Applicable to Windows 95/98/ME/NT/2000/XP/2003.](#)

- **Disable Local Stylesheets in Internet Explorer** - Internet Explorer has an option to always load a local stylesheet to set browser based preferences for web page styles. This feature can be exploited by unauthorized programs to implement unrequested popups and malicious tracking of user activity. This restriction lets you disable loading the local stylesheet. Option affects selected user, see the status bar. Reboot your PC to activate or deactivate this option. [Applicable to Windows 95/98/ME/NT/2000/XP/2003.](#)
- **Customize the Internet Explorer Window Title** - Use this option to change the window title of Internet Explorer. It is useful when you set up a public access PC and want to place your company's information on the title to notify users that your company provides this service. Option affects selected user, see the status bar. Reboot your PC to activate or deactivate this option. [Applicable to Windows 95/98/ME/NT/2000/XP/2003.](#)
- **Disable Script Debugger in Internet Explorer** - This restriction allows you to disable the script debugger that pops up each time Internet Explorer encounters an error in a script on a web page. Option affects selected user, see the status bar. Reboot your PC to activate or deactivate this option. [Applicable to Windows 95/98/ME/NT/2000/XP/2003.](#)
- **Disable Automatic Proxy Caching in Internet Explorer** - If you configure Internet Explorer to use automatic proxy configuration, it caches the received proxy information, therefore in the event that a proxy server fails you may get an error message even though other proxies are alive. By enabling this option you disable caching and force Internet Explorer to use the latest proxy information. Option affects selected user, see the status bar. Reboot your PC to activate or deactivate this option. [Applicable to Windows 95/98/ME/NT/2000/XP/2003.](#)
- **Remove Windows Update Menu Item from Internet Explorer** - This restriction allows you to remove the Windows Update item from the Tools menu of Internet Explorer. Option affects selected user, see the status bar. Reboot your PC to activate or deactivate this option. [Applicable to Windows 95/98/ME/NT/2000/XP/2003.](#)
- **Prevent Internet Explorer Windows from Being Reused** - This restriction prevents Internet Explorer windows from being reused. If you turn it on, a new window will always be created each time you open an Internet shortcut. Option affects selected user, see the status bar. Reboot your PC to activate or deactivate this option. [Applicable to Windows 95/98/ME/NT/2000/XP/2003.](#)
- **Remove Media Bar Command on the Toolbar of Internet Explorer** - Removes the Media Bar command on the toolbar of Internet Explorer when the user plays online content. Option affects selected user, see the status bar. Reboot your PC to activate or deactivate this option. [Applicable to Windows 95/98/ME/NT/2000/XP/2003.](#)
- **Disallow the Playing of Online Content in Internet Explorer** - This restriction disallows the playing of online content in Internet Explorer. Note that this will only disable online content in Internet Explorer if the content is displayed right on a web page. It will not prevent users from playing video and audio files using Media Players. Option affects selected user, see the status bar. Reboot your PC to activate or deactivate this option. [Applicable to Windows 95/98/ME/NT/2000/XP/2003.](#)
- **Hide the Links Folder on the Favorites Menu** - By default, Internet Explorer constantly creates the Links folder on the Favorites menu each time you delete it manually from Favorites. This option allows you to remove it permanently. Note that this option only stops this folder from being automatically recreated. You must delete it manually from Favorites after reboot. Option affects selected user, see the status bar. Reboot your PC to activate or deactivate this option. [Applicable to Windows 95/98/ME/NT/2000/XP/2003.](#)

See also:

- [All restrictions.](#)
- [How to use.](#)
- [How to spy on your PC users.](#)
- [How to copy restrictions between users in the tree.](#)
- [How to Export/Import restrictions.](#)
- [How to lock your personal computer with a password.](#)
- [How to deny access to 1st Security Agent.](#)

- About the program.
- Purpose of the program.
- User interface.

Hiding Selected Internet Explorer Toolbar Buttons

The following restrictions are available in this group:

- **Hide Checked in this Group Browser Buttons** - If you check this option, all checked in this group buttons will become hidden. If you uncheck this option, all browser buttons will become visible even if they are checked in the group. To specify hidden buttons, check desired items in this group (see below this option). Option affects selected user, see the status bar. Reboot your PC to activate or deactivate this option. [Applicable to Windows 95/98/ME/NT/2000/XP/2003.](#)
- **Back Button** - Along with the "Hide Checked in this Group Browser Buttons" option, removes Back button from the Internet Explorer. Option affects selected user, see the status bar. Reboot your PC to activate or deactivate this option. [Applicable to Windows 95/98/ME/NT/2000/XP/2003.](#)
- **Forward Button** - Along with the "Hide Checked in this Group Browser Buttons" option, removes Forward button from the Internet Explorer. Option affects selected user, see the status bar. Reboot your PC to activate or deactivate this option. [Applicable to Windows 95/98/ME/NT/2000/XP/2003.](#)
- **Stop Button** - Along with the "Hide Checked in this Group Browser Buttons" option, removes Stop button from the Internet Explorer. Option affects selected user, see the status bar. Reboot your PC to activate or deactivate this option. [Applicable to Windows 95/98/ME/NT/2000/XP/2003.](#)
- **Refresh Button** - Along with the "Hide Checked in this Group Browser Buttons" option, removes Refresh button from the Internet Explorer. Option affects selected user, see the status bar. Reboot your PC to activate or deactivate this option. [Applicable to Windows 95/98/ME/NT/2000/XP/2003.](#)
- **Home Button** - Along with the "Hide Checked in this Group Browser Buttons" option, removes Home button from the Internet Explorer. Option affects selected user, see the status bar. Reboot your PC to activate or deactivate this option. [Applicable to Windows 95/98/ME/NT/2000/XP/2003.](#)
- **Search Button** - Along with the "Hide Checked in this Group Browser Buttons" option, removes Search button from the Internet Explorer. Option affects selected user, see the status bar. Reboot your PC to activate or deactivate this option. [Applicable to Windows 95/98/ME/NT/2000/XP/2003.](#)
- **Folders Button** - Along with the "Hide Checked in this Group Browser Buttons" option, removes Folders button from the Internet Explorer. Option affects selected user, see the status bar. Reboot your PC to activate or deactivate this option. [Applicable to Windows 95/98/ME/NT/2000/XP/2003.](#)
- **Favorites Button** - Along with the "Hide Checked in this Group Browser Buttons" option, removes Favorites button from the Internet Explorer. Option affects selected user, see the status bar. Reboot your PC to activate or deactivate this option. [Applicable to Windows 95/98/ME/NT/2000/XP/2003.](#)
- **Media Button** - Along with the "Hide Checked in this Group Browser Buttons" option, removes Media button from the Internet Explorer. Option affects selected user, see the status bar. Reboot your PC to activate or deactivate this option. [Applicable to Windows 95/98/ME/NT/2000/XP/2003.](#)
- **History Button** - Along with the "Hide Checked in this Group Browser Buttons" option, removes History button from the Internet Explorer. Option affects selected user, see the status bar. Reboot your PC to activate or deactivate this option. [Applicable to Windows 95/98/ME/NT/2000/XP/2003.](#)
- **Fullscreen Button** - Along with the "Hide Checked in this Group Browser Buttons" option, removes Fullscreen button from the Internet Explorer. Option affects selected user, see the status bar. Reboot your PC to activate or deactivate this option. [Applicable to Windows 95/98/ME/NT/2000/XP/2003.](#)
- **Tools Button** - Along with the "Hide Checked in this Group Browser Buttons" option, removes Tools button from the Internet Explorer. Option affects selected user, see the status bar. Reboot your PC to activate or deactivate this option. [Applicable to Windows 95/98/ME/NT/2000/XP/2003.](#)
- **MailNews Button** - Along with the "Hide Checked in this Group Browser Buttons" option, removes MailNews button from the Internet Explorer. Option affects selected user, see the status bar. Reboot your PC to activate or deactivate this option. [Applicable to Windows 95/98/ME/NT/2000/XP/2003.](#)
- **Size Button** - Along with the "Hide Checked in this Group Browser Buttons" option, removes Size button from the Internet Explorer. Option affects selected user, see the status bar. Reboot your PC to activate or deactivate this option. [Applicable to Windows 95/98/ME/NT/2000/XP/2003.](#)
- **Print Button** - Along with the "Hide Checked in this Group Browser Buttons" option, removes Print button from the Internet Explorer. Option affects selected user, see the status bar. Reboot your PC to activate or deactivate this option. [Applicable to Windows 95/98/ME/NT/2000/XP/2003.](#)
- **Edit Button** - Along with the "Hide Checked in this Group Browser Buttons" option, removes Edit button from the Internet Explorer. Option affects selected user, see the status bar. Reboot your PC to

- activate or deactivate this option. [Applicable to Windows 95/98/ME/NT/2000/XP/2003.](#)
- **Discussions Button** - Along with the "Hide Checked in this Group Browser Buttons" option, removes Discussions button from the Internet Explorer. Option affects selected user, see the status bar. Reboot your PC to activate or deactivate this option. [Applicable to Windows 95/98/ME/NT/2000/XP/2003.](#)
 - **Cut Button** - Along with the "Hide Checked in this Group Browser Buttons" option, removes Cut button from the Internet Explorer. Option affects selected user, see the status bar. Reboot your PC to activate or deactivate this option. [Applicable to Windows 95/98/ME/NT/2000/XP/2003.](#)
 - **Copy Button** - Along with the "Hide Checked in this Group Browser Buttons" option, removes Copy button from the Internet Explorer. Option affects selected user, see the status bar. Reboot your PC to activate or deactivate this option. [Applicable to Windows 95/98/ME/NT/2000/XP/2003.](#)
 - **Paste Button** - Along with the "Hide Checked in this Group Browser Buttons" option, removes Paste button from the Internet Explorer. Option affects selected user, see the status bar. Reboot your PC to activate or deactivate this option. [Applicable to Windows 95/98/ME/NT/2000/XP/2003.](#)
 - **Encoding Button** - Along with the "Hide Checked in this Group Browser Buttons" option, removes Encoding button from the Internet Explorer. Option affects selected user, see the status bar. Reboot your PC to activate or deactivate this option. [Applicable to Windows 95/98/ME/NT/2000/XP/2003.](#)
 - **Print Preview Button** - Along with the "Hide Checked in this Group Browser Buttons" option, removes Print Preview button from the Internet Explorer. Option affects selected user, see the status bar. Reboot your PC to activate or deactivate this option. [Applicable to Windows 95/98/ME/NT/2000/XP/2003.](#)

See also:

- [All restrictions.](#)
- [How to use.](#)
- [How to spy on your PC users.](#)
- [How to copy restrictions between users in the tree.](#)
- [How to Export/Import restrictions.](#)
- [How to lock your personal computer with a password.](#)
- [How to deny access to 1st Security Agent.](#)
- [About the program.](#)
- [Purpose of the program.](#)
- [User interface.](#)

Offline Pages Restrictions

The following restrictions are available in this group:

- **Disable Adding Channels** - Prevents the user from adding channels to Internet Explorer. Channels are web sites that are updated automatically on your computer, according to a schedule specified by the channel provider. If you enable this restriction, the Add Active Channel button that appears on a channel the user has not yet subscribed to, will be disabled. The user also can not add content that is based on a channel, such as some of the Active Desktop items from Microsoft's Active Desktop Gallery, to their desktop. Option affects selected user, see the status bar. Reboot your PC to activate or deactivate this option. [Applicable to Windows 95/98/ME/NT/2000/XP/2003.](#)
- **Disable Removing Channels** - Prevents the user from disabling channel synchronization in Microsoft Internet Explorer. Channels are web sites that are automatically updated on your computer according to a schedule specified by the channel provider. If you enable this restriction, the user can not prevent channels from being synchronized. Option affects selected user, see the status bar. Reboot your PC to activate or deactivate this option. [Applicable to Windows 95/98/ME/NT/2000/XP/2003.](#)
- **Disable Users Channels** - Disables users channels in Internet Explorer. Channels are web sites that are updated automatically on your computer, according to a schedule specified by the channel provider. Option affects selected user, see the status bar. Reboot your PC to activate or deactivate this option. [Applicable to Windows 95/98/ME/NT/2000/XP/2003.](#)
- **Disable Adding Schedules for Offline Pages** - Prevents the user from specifying that web pages can be downloaded for viewing offline. When the user makes web pages available for offline viewing, he/she can view the content when the computer is not connected to the Internet. If you enable this restriction, the user can not add new schedules for downloading offline content. The Make Available Offline check box will be dimmed in the Add Favorite dialog box. Option affects selected user, see the status bar. Reboot your PC to activate or deactivate this option. [Applicable to Windows 95/98/ME/NT/2000/XP/2003.](#)
- **Disable Editing Schedules for Offline Pages** - Prevents the user from editing an existing schedule for downloading web pages for offline viewing. When the user makes web pages available for offline viewing, he/she can view content when the computer is not connected to the Internet. If you enable this restriction, the user is unable to display the schedule properties of pages that have been set up for offline viewing. If the user clicks the Tools - Synchronize menu item then selects a web page, and then clicks the Properties button, no properties are displayed. Option affects selected user, see the status bar. Reboot your PC to activate or deactivate this option. [Applicable to Windows 95/98/ME/NT/2000/XP/2003.](#)
- **Disable Removing Schedules for Offline Pages** - Prevents the user from changing the preconfigured settings for web pages to be downloaded for offline viewing. When the user makes web pages available for offline viewing, he/she can view content when the computer is not connected to the Internet. If you enable this restriction, the Make Available Offline check box in the Organize Favorites Favorite dialog box and the Make This Page Available Offline check box will be selected but dimmed. The Make This Page Available Offline check box can be displayed by using the Tools - Synchronize - Properties command sequence. Option affects selected user, see the status bar. Reboot your PC to activate or deactivate this option. [Applicable to Windows 95/98/ME/NT/2000/XP/2003.](#)
- **Disable Offline Page Hit Logging** - Prevents channel providers from recording information about when their channel pages are viewed by the user who is working offline. If you enable this restriction, you will disable any channel logging settings set by channel providers in the channel definition format file. Option affects selected user, see the status bar. Reboot your PC to activate or deactivate this option. [Applicable to Windows 95/98/ME/NT/2000/XP/2003.](#)
- **Disable All Scheduled Offline Pages** - This restriction will disable the ability to synchronize offline pages by schedule. However the user will still be able to synchronize offline pages by using the Tools - Synchronize command. Option affects selected user, see the status bar. Reboot your PC to activate or deactivate this option. [Applicable to Windows 95/98/ME/NT/2000/XP/2003.](#)
- **Disable Downloading of Site Subscription Content** - Prevents content from being downloaded from web sites that the user has subscribed to. When the user makes web pages available for offline

viewing, he/she can view content when the computer is not connected to the Internet. If you enable this restriction, content will not be downloaded from web sites that the user has subscribed to. However, synchronization with the web pages will still occur to determine if any content has been updated since the last time the user synchronized with or visited the page. Option affects selected user, see the status bar. Reboot your PC to activate or deactivate this option. [Applicable to Windows 95/98/ME/NT/2000/XP/2003.](#)

- **Disable Editing and Creating of Schedule Groups** - Prevents the user from adding, editing, or removing schedules for offline viewing of web pages and groups of web pages that the user has subscribed to. A subscription group is a favorite web page plus the web pages it links to. If you enable this restriction, the Add, Remove, and Edit buttons on the Schedule tab in the Web page Properties dialog box are dimmed. This tab can be displayed by using the Tools - Synchronize - Properties - Schedule command sequence. Option affects selected user, see the status bar. Reboot your PC to activate or deactivate this option. [Applicable to Windows 95/98/ME/NT/2000/XP/2003.](#)
- **Disable the Synchronize Command on the Tools Menu** - This restriction disables the Synchronize command on the Tools menu of Windows Explorer and Internet Explorer. Option affects selected user, see the status bar. Reboot your PC to activate or deactivate this option. [Applicable to Windows 95/98/ME/NT/2000/XP/2003.](#)
- **Limit Number of Subscriptions** - This restriction limits the number of web pages that the user can make available offline. If you enable this restriction and set the maximum number of allowed subscriptions, the user will get an error message upon adding a new offline page if the number of added subscriptions exceeds this maximum. Enter the maximum number of pages below. Option affects selected user, see the status bar. Reboot your PC to activate or deactivate this option. [Applicable to Windows 95/98/ME/NT/2000/XP/2003.](#)
- **Limit Allowed Subscription Size** - This restriction lets you limit the disk space used for storing user's offline pages. If you enable this restriction and set the maximum allowed subscription size, the user will get an error message upon synchronization if the total size of his/her subscription exceeds this maximum. Enter the maximum allowed size in KBytes below. Option affects selected user, see the status bar. Reboot your PC to activate or deactivate this option. [Applicable to Windows 95/98/ME/NT/2000/XP/2003.](#)
- **Limit the Number Crawled Levels** - This restriction lets you limit the number of crawled levels for user's offline pages. Enter the maximum number of levels below. Option affects selected user, see the status bar. Reboot your PC to activate or deactivate this option. [Applicable to Windows 95/98/ME/NT/2000/XP/2003.](#)
- **Force Subscription Update Timing** - This restriction lets you force a minimum update time interval for your subscriptions. Channels and subscriptions can not be updated more often than this number of minutes. Enter the minimum number of minutes below. Option affects selected user, see the status bar. Reboot your PC to activate or deactivate this option. [Applicable to Windows 95/98/ME/NT/2000/XP/2003.](#)

See also:

- [All restrictions.](#)
- [How to use.](#)
- [How to spy on your PC users.](#)
- [How to copy restrictions between users in the tree.](#)
- [How to Export/Import restrictions.](#)
- [How to lock your personal computer with a password.](#)
- [How to deny access to 1st Security Agent.](#)
- [About the program.](#)
- [Purpose of the program.](#)
- [User interface.](#)

Network and Workgroup Security Settings

The following restrictions are available in this group:

- **Disable Mapped Drive Reconnect Warning** - This setting is used to disable the mapped drive reconnect warning shown at startup when a network drive is unavailable. Option affects selected user, see the status bar. Reboot your PC to activate or deactivate this option. [Applicable to Windows 95/98/ME.](#)
- **Hide the Active Directory Folder in My Network Places** - This restriction is used to remove the Active Directory folder from My Network Places. This still allows users to search but not browse the Active Directory. Option affects selected user, see the status bar. Reboot your PC to activate or deactivate this option. [Applicable to Windows 2000.](#)
- **Hide the Network Neighborhood Icon from the Desktop** - The Network Neighborhood/My Network Places icon is shown on the Windows desktop whenever Windows networking is installed, by enabling this setting the icon will be hidden. Option affects selected user, see the status bar. Reboot your PC to activate or deactivate this option. [Applicable to Windows 95/98/ME/NT/2000/XP/2003.](#)
- **Remove Entire Network from Network Neighborhood** - Entire Network is an option under Network Neighborhood that allows users to see all the Workgroup and Domains on the network. Entire Network can be disabled, so users are confined to their own Workgroup or Domain. Option affects selected user, see the status bar. Reboot your PC to activate or deactivate this option. [Applicable to Windows 95/98/ME/NT/2000/XP/2003.](#)
- **Hide Workgroup Content from Network Neighborhood** - Enabling this option, hides all Workgroup content from being displayed in Network Neighborhood. Option affects selected user, see the status bar. Reboot your PC to activate or deactivate this option. [Applicable to Windows 95/98/ME/NT/2000/XP/2003.](#)
- **Remove the Map and Disconnect Network Drive Options** - Prevents users from making additional network connections by removing the Map Network Drive and Disconnect Network Drive buttons from the toolbar in Explorer and also removing the menu items from the Context menu of My Computer and the Tools menu of Explorer. Option affects selected user, see the status bar. Reboot your PC to activate or deactivate this option. [Applicable to Windows ME/2000/XP/2003.](#)
- **Hide Computers Near Me in Network Places** - This setting allows you to show or hide the computers listed Near Me in My Network Places. Option affects selected user, see the status bar. Reboot your PC to activate or deactivate this option. [Applicable to Windows 2000/XP/2003.](#)
- **Disable Recent Shares in Network Places** - This restriction stops remote shared folders from being added to Network Places whenever you open a document in the shared folder. Option affects selected user, see the status bar. Reboot your PC to activate or deactivate this option. [Applicable to Windows 2000/XP/2003.](#)
- **Disable Network Folders and Printers Crawling** - This restriction disables the ability in Windows to automatically attempt to locate available file shares and printers by crawling the local network. Option affects selected user, see the status bar. Reboot your PC to activate or deactivate this option. [Applicable to Windows 95/98/ME/NT/2000/XP/2003.](#)
- **Disallow Portables to Undock Before Logon** - This restriction disables the option to undock the system before logging onto the computer. Option affects selected user, see the status bar. Reboot your PC to activate or deactivate this option. [Applicable to Windows XP/2003.](#)

See also:

- [All restrictions.](#)
- [How to use.](#)
- [How to spy on your PC users.](#)
- [How to copy restrictions between users in the tree.](#)
- [How to Export/Import restrictions.](#)
- [How to lock your personal computer with a password.](#)
- [How to deny access to 1st Security Agent.](#)
- [About the program.](#)
- [Purpose of the program.](#)
- [User interface.](#)

System Security Restrictions and Settings

The following restrictions are available in this group:

- **Enforce Shell Extension Security** - This restriction can be used to limit the system to only run files that have an approved shell extension. Option affects selected user, see the status bar. Reboot your PC to activate or deactivate this option. [Applicable to Windows 95/98/ME/NT/2000/XP/2003.](#)
- **Disable PC Speaker Beeping on Errors** - If you get annoyed by the beeps and noises coming from your PC speaker but can't find a way to turn it off, then use this tip to disable it. Option affects selected user, see the status bar. Reboot your PC to activate or deactivate this option. [Applicable to Windows 95/98/ME/NT/2000/XP/2003.](#)
- **Automatically Ending Hung Applications** - When this option is enabled it will force Windows to shutdown immediately ending all tasks without attempting to safely close any applications that have hung. Option affects selected user, see the status bar. Reboot your PC to activate or deactivate this option. [Applicable to Windows 95/98/ME/NT/2000/XP/2003.](#)
- **Disable Using Connected Web Files and Folders** - The Windows file system includes a feature to connect web documents and their associated files. If an HTML document is moved or copied all its associated files, including images, JavaScript and style sheets, can also be automatically relocated. This feature can be disabled by this restriction. Option affects selected user, see the status bar. Reboot your PC to activate or deactivate this option. [Applicable to Windows ME/2000/XP/2003.](#)
- **Disable Low Disk Space Notification** - This setting controls whether you receive a "Low Disk Space" warning when free disk space reaches less than 200 megabytes. Option affects selected user, see the status bar. Reboot your PC to activate or deactivate this option. [Applicable to Windows XP/2003.](#)
- **Disable Registry Editing Tools** - This setting disables user's ability to run Regedit.exe or Regedt32.exe to modify the registry. Be careful with this setting and make sure you don't lock yourself of the registry. Option affects selected user, see the status bar. Reboot your PC to activate or deactivate this option. [Applicable to Windows 95/98/ME/NT/2000/XP/2003.](#)
- **Disable the Windows Animation Function** - Although the Windows animation function, can look good it can slow down your PC if you have a slower graphics card. This option allows you to disable the Windows animation function. Option affects selected user, see the status bar. Reboot your PC to activate or deactivate this option. [Applicable to Windows 95/98/ME/NT/2000.](#)
- **Disable Smooth Scrolling Function** - This setting allows you to disable the Windows smooth scrolling function, which on a low-powered system can cause performance degradation. Option affects selected user, see the status bar. Reboot your PC to activate or deactivate this option. [Applicable to Windows 95/98/ME/NT/2000.](#)
- **Disable the Shut Down Command** - This option allows you to stop users from being able to shutdown the computer, by disabling the shut down command. It also removes the Shut Down button from the Windows NT Security dialog box. To enable Windows Security dialog box on Windows XP, turn off Fast User Switching in Control Panel->User Accounts. Option affects selected user, see the status bar. Reboot your PC to activate or deactivate this option. [Applicable to Windows 95/98/ME/NT/2000/XP/2003.](#)
- **Disable Task Manager** - Enables or disables the user's ability to start Task Manager to view processes, applications running, and make changes to the priority or state of the individual processes. It also removes the Task Manager button from the Windows NT Security dialog box. To enable Windows Security dialog box on Windows XP, turn off Fast User Switching in Control Panel->User Accounts. Option affects selected user, see the status bar. Reboot your PC to activate or deactivate this option. [Applicable to Windows NT/2000/XP/2003.](#)
- **Disable the Lock Workstation Button** - Add this setting to the registry to stop unauthorized users from locking machines from the Windows NT Security dialog box. To enable Windows Security dialog box on Windows XP, turn off Fast User Switching in Control Panel->User Accounts. Option affects selected user, see the status bar. Reboot your PC to activate or deactivate this option. [Applicable to Windows NT/2000/XP/2003.](#)
- **Disable the Change Password Button** - This setting disables the 'Change Password' button on the Windows NT Security dialog box. Enabling this setting stops casual users from being able to change the password. To enable Windows Security dialog box on Windows XP, turn off Fast User Switching in

Control Panel->User Accounts. Option affects selected user, see the status bar. Reboot your PC to activate or deactivate this option. [Applicable to Windows NT/2000/XP/2003.](#)

- **Disable the Log Off Button** - This option disables the Log Off button in the Windows NT Security dialog box. It also removes the Log Off <Username> item from the Start Menu if the Windows Welcome Screen is disabled and the classic logon window is used. To enable Windows Security dialog box on Windows XP and higher, turn off Fast User Switching in Control Panel->User Accounts. Option affects selected user, see the status bar. Reboot your PC to activate or deactivate this option. [Applicable to Windows 95/98/ME/NT/2000/XP/2003.](#)
- **Disable Alternate Installation Credential Settings** - These settings control whether users are prompted to enter alternate logon credentials when installing software as a non administrative user or not. Option affects selected user, see the status bar. Reboot your PC to activate or deactivate this option. [Applicable to Windows 2000/XP/2003.](#)
- **Screen Saver Password Protection Policy** - This restriction determines whether the screen saver is password protected and prevents users from changing the password-protection setting. Option affects selected user, see the status bar. Reboot your PC to activate or deactivate this option. [Applicable to Windows 2000/XP/2003.](#)
- **Prompt for Password on Resume** - This setting allows you to configure the computer to always lock and require a password after resuming from hibernate or suspend mode. Option affects the whole PC. Reboot your PC to activate or deactivate this option. [Applicable to Windows XP/2003.](#)
- **Disable Tracking of Broken Shortcut Links** - The NTFS File System in NT-based Windows automatically attempts to locate broken shortcut destinations by searching all paths that are associated with it. This setting can be used to disable that feature. Option affects selected user, see the status bar. Reboot your PC to activate or deactivate this option. [Applicable to Windows 2000/XP/2003.](#)
- **Comprehensive Search for Broken Shortcuts** - When the system cannot find the target file of a shortcut it searches all the associated paths. If still not found it performs a comprehensive search of the drive to locate the file. This setting can be used to disable the final search. This applies only to target files on NTFS partitions. File allocation table (FAT) partitions do not have this ID tracking and search capability. [Applicable to Windows NT/2000/XP/2003.](#)
- **Disable Automatic Network Shortcut Resolution** - When you create a shortcut to a resource on a mapped network drive, and then remap the same drive to a different network resource, Windows attempts to connect to the original network resource when you access the shortcut. This option lets you disable it completely. Option affects selected user, see the status bar. Reboot your PC to activate or deactivate this option. [Applicable to Windows 95/98/ME/NT/2000/XP/2003.](#)
- **Disable Update Device Driver Wizard** - This option allows you to disable the ability to use Windows Update to locate updated drivers for hardware in the Device Manager. Option affects selected user, see the status bar. Reboot your PC to activate or deactivate this option. [Applicable to Windows 98/ME/2000/XP/2003.](#)
- **Disable Desktop Cleanup Wizard** - By default Windows runs the Desktop Cleanup Wizard every 60 days to remove unused items and shortcuts from desktop. This setting lets you disable it from running automatically. Option affects selected user, see the status bar. Reboot your PC to activate or deactivate this option. [Applicable to Windows XP/2003.](#)
- **Disable the Thumbnail Cache** - This option lets you stop explorer from caching thumbnail pictures and instead of this refresh any images every time a folder is opened. Option affects selected user, see the status bar. Reboot your PC to activate or deactivate this option. [Applicable to Windows XP/2003.](#)
- **Disable CD Burning** - This restriction is used to disable the use of the inbuilt CD recording functions of Windows. Option affects selected user, see the status bar. Reboot your PC to activate or deactivate this option. [Applicable to Windows XP/2003.](#)
- **Restrict MSI Installations from Removable Media** - This restriction stops users from installing programs built with MSI Microsoft Installer (files with *.msi extension) from removable media, such as CD-ROMs, floppy disks, DVDs, and so on. Option affects selected user, see the status bar. Reboot your PC to activate or deactivate this option. [Applicable to Windows 2000/XP/2003.](#)
- **Disable MSI Windows Installer Rollback** - This restriction stops MSI Windows Installer from recording the original state of the system and sequence of changes it makes during installations. This restriction may be used to reduce the amount of temporary disk space required to install programs.

Option affects selected user, see the status bar. Reboot your PC to activate or deactivate this option. [Applicable to Windows 2000/XP/2003.](#)

- **Disable Installation of Unsigned Device Drivers** - This restriction disables installing device drivers, which are not digitally signed and have not passed the Windows Logo testing. Option affects selected user, see the status bar. Reboot your PC to activate or deactivate this option. [Applicable to Windows 2000/XP/2003.](#)
- **Force to Copy/Move Files with Original NTFS Permissions** - When you copy or move files or folders, they inherit the permissions of their new root. This restriction allows you to force Windows to preserve the original permissions instead. Option affects selected user, see the status bar. Reboot your PC to activate or deactivate this option. [Applicable to Windows NT/2000/XP/2003.](#)
- **Restrict Author Mode in Management Console** - This restriction prevents users from opening Microsoft Management Console and relevant MMC console files in the author mode. Option affects selected user, see the status bar. Reboot your PC to activate or deactivate this option. [Applicable to Windows 2000/XP/2003.](#)
- **Restrict the Use of Management Console Snap-Ins** - This option restricts access to all snap-ins, except for those, which you explicitly permit via the group policy restricted/permitted snap-ins setting folder. Option affects selected user, see the status bar. Reboot your PC to activate or deactivate this option. [Applicable to Windows 2000/XP/2003.](#)
- **Disable Home Folder Search on Program Run** - If you have a home folder set and you try to run a program by clicking Start and then clicking Run, Windows searches your home folder for the program before searching the path. If your home folder is on the network, this creates unnecessary network traffic if the program is located on the local computer. This restriction lets you disable this behavior. Option affects selected user, see the status bar. Reboot your PC to activate or deactivate this option. [Applicable to Windows 2000/XP/2003.](#)

See also:

- [All restrictions.](#)
- [How to use.](#)
- [How to spy on your PC users.](#)
- [How to copy restrictions between users in the tree.](#)
- [How to Export/Import restrictions.](#)
- [How to lock your personal computer with a password.](#)
- [How to deny access to 1st Security Agent.](#)
- [About the program.](#)
- [Purpose of the program.](#)
- [User interface.](#)

[Shutdown and Logon Scripts Security Restrictions](#)

The following restrictions are available in this group:

- **Hide the Logon Scripts** - This setting controls whether the output from the logon scripts is displayed in a console window as the script executes. Option affects selected user, see the status bar. Reboot your PC to activate or deactivate this option. [Applicable to Windows 2000/XP/2003.](#)
- **Hide the Logoff Scripts** - This setting controls whether the output from the logoff scripts is displayed in a console window as the script executes. Option affects selected user, see the status bar. Reboot your PC to activate or deactivate this option. [Applicable to Windows 2000/XP/2003.](#)
- **Hide the Legacy Logon Scripts** - This setting controls whether the output from legacy Windows NT 4.0 logon scripts is displayed in a console window as the script executes. Option affects selected user, see the status bar. Reboot your PC to activate or deactivate this option. [Applicable to Windows 2000/XP/2003.](#)

See also:

- [All restrictions.](#)
- [How to use.](#)
- [How to spy on your PC users.](#)
- [How to copy restrictions between users in the tree.](#)
- [How to Export/Import restrictions.](#)
- [How to lock your personal computer with a password.](#)
- [How to deny access to 1st Security Agent.](#)
- [About the program.](#)
- [Purpose of the program.](#)
- [User interface.](#)

Hiding Special Icons

By default Windows has no a possibility to hide special icons such as My Computer, Recycle Bin, My Documents, etc. from the desktop and from the file system. Using the following options you can hide a lot of special icons:

- **Hide My Computer Icon** - Hides My Computer Icon Option affects selected user, see the status bar. Reboot your PC to activate or deactivate this option. In Windows 95/98 this option disables the Icon but does not remove it from the desktop. [Applicable to Windows 95/98/ME//NT42000/XP/2003.](#)
- **Hide My Documents Icon** - Hides My Documents Icon Option affects selected user, see the status bar. Reboot your PC to activate or deactivate this option. [Applicable to Windows 95/98/ME/NT4/2000/XP/2003.](#)
- **Hide Recycle Bin Icon** - Hides Recycle Bin Icon Option affects selected user, see the status bar. Reboot your PC to activate or deactivate this option. [Applicable to Windows 95/98/ME/NT4/2000/XP/2003.](#)
- **Hide My Network Places Icon** - Hides My Network Places Icon Option affects selected user, see the status bar. Reboot your PC to activate or deactivate this option. [Applicable to Windows ME/2000/XP/2003.](#)
- **Hide Administrative Tools Icon** - Hides Administrative Tools Icon Option affects selected user, see the status bar. Reboot your PC to activate or deactivate this option. [Applicable to Windows ME/2000/XP/2003.](#)
- **Hide Network Connections Icon** - Hides Network Connections Icon Option affects selected user, see the status bar. Reboot your PC to activate or deactivate this option. [Applicable to Windows ME/2000/XP/2003.](#)
- **Hide Control Panel Icon** - Hides Control Panel Icon Option affects selected user, see the status bar. Reboot your PC to activate or deactivate this option. [Applicable to Windows ME/2000/XP/2003.](#)
- **Hide Briefcase Icon** - Hides Briefcase Icon Option affects selected user, see the status bar. Reboot your PC to activate or deactivate this option. [Applicable to Windows ME/2000/XP/2003.](#)
- **Hide Fonts Icon** - Hides Fonts Icon Option affects selected user, see the status bar. Reboot your PC to activate or deactivate this option. [Applicable to Windows ME/2000/XP/2003.](#)
- **Hide History Icon** - Hides History Icon Option affects selected user, see the status bar. Reboot your PC to activate or deactivate this option. [Applicable to Windows ME/2000/XP/2003.](#)
- **Hide Inbox Icon** - Hides Inbox Icon Option affects selected user, see the status bar. Reboot your PC to activate or deactivate this option. [Applicable to Windows 95/98/ME/NT4/2000/XP/2003.](#)
- **Hide Microsoft Network Icon** - Hides Microsoft Network Icon Option affects selected user, see the status bar. Reboot your PC to activate or deactivate this option. [Applicable to Windows 95/98/ME/NT4/2000/XP/2003.](#)
- **Hide Network Computers Icon** - Hides Network Computers Icon Option affects selected user, see the status bar. Reboot your PC to activate or deactivate this option. [Applicable to Windows ME/2000/XP/2003.](#)
- **Hide Printers and Faxes Icon** - Hides Printers and Faxes Icon Option affects selected user, see the status bar. Reboot your PC to activate or deactivate this option. [Applicable to Windows ME/2000/XP/2003.](#)
- **Hide Programs Folder Icon** - Hides Programs Folder Icon Option affects selected user, see the status bar. Reboot your PC to activate or deactivate this option. [Applicable to Windows ME/2000/XP/2003.](#)
- **Hide Scanners and Cameras Icon** - Hides Scanners and Cameras Icon Option affects selected user, see the status bar. Reboot your PC to activate or deactivate this option. [Applicable to Windows ME/2000/XP/2003.](#)
- **Hide Scheduled Tasks Icon** - Hides Scheduled Tasks Icon Option affects selected user, see the status bar. Reboot your PC to activate or deactivate this option. [Applicable to Windows ME/2000/XP/2003.](#)
- **Hide Start Menu Folder Icon** - Hides Start Menu Folder Icon Option affects selected user, see the status bar. Reboot your PC to activate or deactivate this option. [Applicable to Windows ME/2000/XP/2003.](#)
- **Hide Temporary Internet Files Icon** - Hides Temporary Internet Files Icon Option affects selected

user, see the status bar. Reboot your PC to activate or deactivate this option. [Applicable to Windows ME/2000/XP/2003.](#)

- **Hide Web Folders Icon** - Hides Web Folders Icon Option affects selected user, see the status bar. Reboot your PC to activate or deactivate this option. [Applicable to Windows 95/98/ME/NT4/2000/XP/2003.](#)

See also:

- [All restrictions.](#)
- [How to use.](#)
- [How to spy on your PC users.](#)
- [How to copy restrictions between users in the tree.](#)
- [How to Export/Import restrictions.](#)
- [How to lock your personal computer with a password.](#)
- [How to deny access to 1st Security Agent.](#)
- [About the program.](#)
- [Purpose of the program.](#)
- [User interface.](#)

User Profile Quota Restrictions

The following restrictions are available in this group:

- **Limit Size of Roaming User Profiles** - If this restriction is enabled and a roaming user profile reaches the threshold established by the value entered below, the user cannot log off until he or she reduces the profile to a permissible size. To help the user, the system displays the files that make up the user profile, and it prompts the user to delete files from the list. Enter an integer number of KBytes below. Option affects selected user, see the status bar. Reboot your PC to activate or deactivate this option. [Applicable to Windows 2000/XP/2003.](#)
- **Include Registry Files to the List of Files Prompted for Deletion** - This setting determines whether registry files appear in the list of files that a user can delete from the roaming user profile. When a roaming user profile grows too large, the system displays a list of files that make up the user profile, and it prompts the user to delete files from the list. Option affects selected user, see the status bar. Reboot your PC to activate or deactivate this option. [Applicable to Windows 2000/XP/2003.](#)
- **Notify User When Profile Quota Is Exceeded** - When this setting is enabled, the system notifies the user as soon as it detects that the profile exceeds the permitted maximum size. If the user does not resolve the problem, the system notifies the user when he or she tries to log off. If this restriction is turned off, the user will be notified only on log off. Enter a warning message below. Option affects selected user, see the status bar. Reboot your PC to activate or deactivate this option. [Applicable to Windows 2000/XP/2003.](#)
- **Profile Quota Exceeding Notification Frequency** - When this setting is enabled, it determines how often the message specified by the value of the Notify User When Profile Quota Is Exceeded option is displayed. This message is displayed repeatedly at the specified rate when the user's roaming user profile is too large. If you enter 0, the message is displayed only once. Enter an integer number of minutes below. Option affects selected user, see the status bar. Reboot your PC to activate or deactivate this option. [Applicable to Windows 2000/XP/2003.](#)

See also:

- [All restrictions.](#)
- [How to use.](#)
- [How to spy on your PC users.](#)
- [How to copy restrictions between users in the tree.](#)
- [How to Export/Import restrictions.](#)
- [How to lock your personal computer with a password.](#)
- [How to deny access to 1st Security Agent.](#)
- [About the program.](#)
- [Purpose of the program.](#)
- [User interface.](#)

Customizing Shell Folders

By default Windows has no a possibility to customize Shell Folders. For example, you can not assign the same desktop for any first two users and different desktop for third user. Only separate shell folders can be assigned for each user. It is impossible to make a common shell folder such as Desktop for two or more users if you use standard Windows tools.

1st Security Agent enables you to realize it. You can customize not only Desktop, but also Favorites, Recent Documents, My Documents, Start Menu, Programs, Startup, Network Neighborhood and other Windows Shell Folders.

The following restrictions are available in this group:

- **Custom Desktop** - These are the shortcuts that appear on the desktop. This option customizes desktop icons. Enter a path for the directory containing complete files or LNK files that define the desktop shortcuts. Option affects selected user, see the status bar. Reboot your PC to activate or deactivate this option. [Applicable to Windows 95/98/ME/NT/2000/XP/2003.](#)
- **Custom Favorites** - These are the shortcuts that appear in the Favorites group on the Start menu and in the Favorites of Internet Explorer. This option customizes the contents of the Favorites directory. Enter a path for the directory containing complete files or LNK files that define the Favorites directory items. Option affects selected user, see the status bar. Reboot your PC to activate or deactivate this option. [Applicable to Windows 95/98/ME/NT/2000/XP/2003.](#)
- **Custom Recent Documents** - These are the shortcuts that appear in the Documents group on the Start menu. This option customizes the contents of the Recent directory. Enter a path for the directory containing complete files or LNK files that define the Recent directory items. Option affects selected user, see the status bar. Reboot your PC to activate or deactivate this option. [Applicable to Windows 95/98/ME/NT/2000/XP/2003.](#)
- **Custom My Documents** - These are the shortcuts that appear in the My Documents folder. This option customizes the contents of the My Documents directory. Enter a path for the directory containing complete files or LNK files that define the My Documents directory items. Option affects selected user, see the status bar. Reboot your PC to activate or deactivate this option. [Applicable to Windows 95/98/ME/NT/2000/XP/2003.](#)
- **Custom Start Menu** - These are the shortcuts and other options that appear on the Start menu, as defined by using the Taskbar Properties dialog box. This option customizes what is listed on the Start menu. Enter a path for the directory containing complete files or LNK files that define the Start menu items. Option affects selected user, see the status bar. Reboot your PC to activate or deactivate this option. [Applicable to Windows 95/98/ME/NT/2000/XP/2003.](#)
- **Custom Programs** - These are the shortcuts that appear in the Programs group on the Start menu. This option customizes the contents of the Programs directory. Enter a path for the directory containing complete files or LNK files that define the Programs directory items. Option affects selected user, see the status bar. Reboot your PC to activate or deactivate this option. [Applicable to Windows 95/98/ME/NT/2000/XP/2003.](#)
- **Custom Startup** - These are the programs or batch files that appear in the Startup group on the Start menu. This option customizes the contents of the Startup directory. Enter a path for the directory containing complete files or LNK files that define the Startup directory items. Option affects selected user, see the status bar. Reboot your PC to activate or deactivate this option. [Applicable to Windows 95/98/ME/NT/2000/XP/2003.](#)
- **Custom Network Neighborhood** - These are the shortcuts to resources that appear in Network Neighborhood, including shortcuts to shared printers and files and to Dial-Up Networking connections. Customizes the contents of Network Neighborhood. Enter a path for the directory containing complete files or LNK files that define the Network Neighborhood items. Option affects selected user, see the status bar. Reboot your PC to activate or deactivate this option. [Applicable to Windows 95/98/ME/NT/2000/XP/2003.](#)

See also:

- [All restrictions.](#)

- [How to use.](#)
- [How to spy on your PC users.](#)
- [How to copy restrictions between users in the tree.](#)
- [How to Export/Import restrictions.](#)
- [How to lock your personal computer with a password.](#)
- [How to deny access to 1st Security Agent.](#)
- [About the program.](#)
- [Purpose of the program.](#)
- [User interface.](#)

Miscellaneous Software Restrictions

The following subgroups are available in this group:

- **MSN Messenger** - Microsoft MSN Instant Messenger Security Restrictions.
- **Net Meeting** - Windows Net Meeting Policies and Restrictions.
- **Task Scheduler** - Task Scheduler Security Restrictions.
- **Media Player** - Windows Media Player Security Restrictions.
- **Microsoft Office** - Microsoft Office Security Restrictions.

See also:

- [All restrictions.](#)
- [How to use.](#)
- [How to spy on your PC users.](#)
- [How to copy restrictions between users in the tree.](#)
- [How to Export/Import restrictions.](#)
- [How to lock your personal computer with a password.](#)
- [How to deny access to 1st Security Agent.](#)
- [About the program.](#)
- [Purpose of the program.](#)
- [User interface.](#)

Microsoft MSN Instant Messenger Security Restrictions

The following restrictions are available in this group:

- **Disable MSN Instant Messenger** - This restriction is used to disable the ability to run the Microsoft MSN Instant Messenger client. Option affects selected user, see the status bar. Reboot your PC to activate or deactivate this option. [Applicable to Windows 95/98/ME/NT/2000/XP/2003.](#)
- **Disable Computer-to-Computer Voice Feature** - The option determines whether the computer-to-computer voice feature in Windows Messenger is enabled or disabled. Option affects selected user, see the status bar. Reboot your PC to activate or deactivate this option. [Applicable to Windows 95/98/ME/NT/2000/XP/2003.](#)
- **Disable Computer-to-Phone Feature** - The option determines whether the computer-to-phone feature in Windows Messenger is enabled or disabled. Option affects selected user, see the status bar. Reboot your PC to activate or deactivate this option. [Applicable to Windows 95/98/ME/NT/2000/XP/2003.](#)
- **Disable Collaboration Applications** - The option determines whether the Whiteboard and application sharing features in Windows Messenger are enabled or disabled. Option affects selected user, see the status bar. The option available only in Windows Messenger on Windows XP. Reboot your PC to activate or deactivate this option. [Applicable to Windows 95/98/ME/NT/2000/XP/2003.](#)
- **Disable File Transfer Feature** - The option determines whether the file transfer feature in Windows Messenger is enabled or disabled. Option affects selected user, see the status bar. Reboot your PC to activate or deactivate this option. [Applicable to Windows 95/98/ME/NT/2000/XP/2003.](#)
- **Disable Video Feature** - The option determines whether the video feature in Windows Messenger is enabled or disabled. Option affects selected user, see the status bar. Reboot your PC to activate or deactivate this option. [Applicable to Windows 95/98/ME/NT/2000/XP/2003.](#)
- **Disable Auto Update Feature** - Option determines whether the feature that allows Windows Messenger to automatically update notifications from service providers is enabled or disabled. Option affects selected user, see the status bar. Reboot your PC to activate or deactivate this option. [Applicable to Windows 95/98/ME/NT/2000/XP/2003.](#)
- **Prevent Consumer Version** - The option determines whether the consumer version feature in Windows Messenger is enabled or disabled. Option affects selected user, see the status bar. Reboot your PC to activate or deactivate this option. [Applicable to Windows 95/98/ME/NT/2000/XP/2003.](#)
- **Prevent Background Download** - The option determines whether the background download feature in Windows Messenger is enabled or disabled. Option affects selected user, see the status bar. Reboot your PC to activate or deactivate this option. [Applicable to Windows 95/98/ME/NT/2000/XP/2003.](#)

See also:

- [Miscellaneous Software Restrictions.](#)
- [All restrictions.](#)
- [How to use.](#)
- [How to spy on your PC users.](#)
- [How to copy restrictions between users in the tree.](#)
- [How to Export/Import restrictions.](#)
- [How to lock your personal computer with a password.](#)
- [How to deny access to 1st Security Agent.](#)
- [About the program.](#)
- [Purpose of the program.](#)
- [User interface.](#)

Windows Net Meeting Policies and Restrictions

The following restrictions are available in this group:

- **Disable Call Security** - Disables Call Security Option affects selected user, see the status bar. Reboot your PC to activate or deactivate this option. [Applicable to Windows 95/98/ME/NT/2000/XP/2003.](#)
- **Disable Intranet Web Directory** - Disables Intranet Web Directory Option affects selected user, see the status bar. Reboot your PC to activate or deactivate this option. [Applicable to Windows 95/98/ME/NT/2000/XP/2003.](#)
- **Disable Max Bandwidth** - Disables Max Bandwidth Option affects selected user, see the status bar. Reboot your PC to activate or deactivate this option. [Applicable to Windows 95/98/ME/NT/2000/XP/2003.](#)
- **Disable Adding Directory Servers** - Disables Adding Directory Servers Option affects selected user, see the status bar. Reboot your PC to activate or deactivate this option. [Applicable to Windows 95/98/ME/NT/2000/XP/2003.](#)
- **Disable Advanced Audio** - Disables Advanced Audio Option affects selected user, see the status bar. Reboot your PC to activate or deactivate this option. [Applicable to Windows 95/98/ME/NT/2000/XP/2003.](#)
- **Disable Advanced Calling** - Disables Advanced Calling Option affects selected user, see the status bar. Reboot your PC to activate or deactivate this option. [Applicable to Windows 95/98/ME/NT/2000/XP/2003.](#)
- **Disable Control** - Disables Control Option affects selected user, see the status bar. Reboot your PC to activate or deactivate this option. [Applicable to Windows 95/98/ME/NT/2000/XP/2003.](#)
- **Disable Application Sharing** - Disables Application Sharing Option affects selected user, see the status bar. Reboot your PC to activate or deactivate this option. [Applicable to Windows 95/98/ME/NT/2000/XP/2003.](#)
- **Disable Audio** - Disables Audio Option affects selected user, see the status bar. Reboot your PC to activate or deactivate this option. [Applicable to Windows 95/98/ME/NT/2000/XP/2003.](#)
- **Disable Audio Control** - Disables Audio Control Option affects selected user, see the status bar. Reboot your PC to activate or deactivate this option. [Applicable to Windows 95/98/ME/NT/2000/XP/2003.](#)
- **Disable Auto Accepting Calls** - Disables Auto Accepting Calls Option affects selected user, see the status bar. Reboot your PC to activate or deactivate this option. [Applicable to Windows 95/98/ME/NT/2000/XP/2003.](#)
- **Disable Changing Direct Sound** - Disables Changing Direct Sound Option affects selected user, see the status bar. Reboot your PC to activate or deactivate this option. [Applicable to Windows 95/98/ME/NT/2000/XP/2003.](#)
- **Disable Changing Call Mode** - Disables Changing Call Mode Option affects selected user, see the status bar. Reboot your PC to activate or deactivate this option. [Applicable to Windows 95/98/ME/NT/2000/XP/2003.](#)
- **Disable Chat** - Disables Chat Option affects selected user, see the status bar. Reboot your PC to activate or deactivate this option. [Applicable to Windows 95/98/ME/NT/2000/XP/2003.](#)
- **Disable Directory Services** - Disables Directory Services Option affects selected user, see the status bar. Reboot your PC to activate or deactivate this option. [Applicable to Windows 95/98/ME/NT/2000/XP/2003.](#)
- **Disable Full Duplex** - Disables Full Duplex Option affects selected user, see the status bar. Reboot your PC to activate or deactivate this option. [Applicable to Windows 95/98/ME/NT/2000/XP/2003.](#)
- **Disable General Control** - Disables General Control Option affects selected user, see the status bar. Reboot your PC to activate or deactivate this option. [Applicable to Windows 95/98/ME/NT/2000/XP/2003.](#)
- **Disable New White Board** - Disables New White Board Option affects selected user, see the status bar. Reboot your PC to activate or deactivate this option. [Applicable to Windows 95/98/ME/NT/2000/XP/2003.](#)
- **Disable Old White Board** - Disables Old White Board Option affects selected user, see the status bar. Reboot your PC to activate or deactivate this option. [Applicable to Windows](#)

[95/98/ME/NT/2000/XP/2003](#).

- **Disable Receiving Files** - Disables Receiving Files Option affects selected user, see the status bar. Reboot your PC to activate or deactivate this option. [Applicable to Windows 95/98/ME/NT/2000/XP/2003](#).
- **Disable Receiving Video** - Disables Receiving Video Option affects selected user, see the status bar. Reboot your PC to activate or deactivate this option. [Applicable to Windows 95/98/ME/NT/2000/XP/2003](#).
- **Disable Security Control** - Disables Security Control Option affects selected user, see the status bar. Reboot your PC to activate or deactivate this option. [Applicable to Windows 95/98/ME/NT/2000/XP/2003](#).
- **Disable Sending Files** - Disables Sending Files Option affects selected user, see the status bar. Reboot your PC to activate or deactivate this option. [Applicable to Windows 95/98/ME/NT/2000/XP/2003](#).
- **Disable Sending Video** - Disables Sending Video Option affects selected user, see the status bar. Reboot your PC to activate or deactivate this option. [Applicable to Windows 95/98/ME/NT/2000/XP/2003](#).
- **Limit the Size of Sending Files** - This restriction lets you limit size of sending files. Enter the maximum allowed file size in KBytes below. Option affects selected user, see the status bar. Reboot your PC to activate or deactivate this option. [Applicable to Windows 95/98/ME/NT/2000/XP/2003](#).
- **Disable Sharing** - Disables Sharing Option affects selected user, see the status bar. Reboot your PC to activate or deactivate this option. [Applicable to Windows 95/98/ME/NT/2000/XP/2003](#).
- **Disable Sharing Desktop** - Disables Sharing Desktop Option affects selected user, see the status bar. Reboot your PC to activate or deactivate this option. [Applicable to Windows 95/98/ME/NT/2000/XP/2003](#).
- **Disable Sharing DOS Windows** - Disables Sharing DOS Windows Option affects selected user, see the status bar. Reboot your PC to activate or deactivate this option. [Applicable to Windows 95/98/ME/NT/2000/XP/2003](#).
- **Disable Sharing Explorer** - Disables Sharing Explorer Option affects selected user, see the status bar. Reboot your PC to activate or deactivate this option. [Applicable to Windows 95/98/ME/NT/2000/XP/2003](#).
- **Disable Sharing True Color Video** - Disables Sharing True Color Video Option affects selected user, see the status bar. Reboot your PC to activate or deactivate this option. [Applicable to Windows 95/98/ME/NT/2000/XP/2003](#).
- **Disable Video Control** - Disables Video Control Option affects selected user, see the status bar. Reboot your PC to activate or deactivate this option. [Applicable to Windows 95/98/ME/NT/2000/XP/2003](#).
- **Disable Web Directory** - Disables Web Directory Option affects selected user, see the status bar. Reboot your PC to activate or deactivate this option. [Applicable to Windows 95/98/ME/NT/2000/XP/2003](#).
- **Disable Showing First Time URL** - Disables Showing First Time URL Option affects selected user, see the status bar. Reboot your PC to activate or deactivate this option. [Applicable to Windows 95/98/ME/NT/2000/XP/2003](#).
- **Force Using Auto Configuration** - Forces Net Meeting to use a specific configuration defined in a configuration file. Enter the URL of your configuration file below. Option affects selected user, see the status bar. Reboot your PC to activate or deactivate this option. [Applicable to Windows 95/98/ME/NT/2000/XP/2003](#).
- **Set the Intranet Support Web Page** - This option lets you set the Intranet support web page. Enter the support web page URL below. Option affects selected user, see the status bar. Reboot your PC to activate or deactivate this option. [Applicable to Windows 95/98/ME/NT/2000/XP/2003](#).
- **Limit the Bandwidth of Audio and Video** - This restriction lets you limit the bandwidth of audio and video streaming. Enter the maximum allowed bandwidth in KBits/Second below. Option affects selected user, see the status bar. Reboot your PC to activate or deactivate this option. [Applicable to Windows 95/98/ME/NT/2000/XP/2003](#).

See also:

- [Miscellaneous Software Restrictions](#).

- [All restrictions.](#)
- [How to use.](#)
- [How to spy on your PC users.](#)
- [How to copy restrictions between users in the tree.](#)
- [How to Export/Import restrictions.](#)
- [How to lock your personal computer with a password.](#)
- [How to deny access to 1st Security Agent.](#)
- [About the program.](#)
- [Purpose of the program.](#)
- [User interface.](#)

Task Scheduler Security Restrictions

The following restrictions are available in this group:

- **Restrict Task Creation in Task Scheduler** - Restricts Task Creation in Task Scheduler Option affects selected user, see the status bar. [Applicable to Windows ME/2000/XP/2003.](#)
- **Restrict Task Deletion in Task Scheduler** - Restricts Task Deletion in Task Scheduler Option affects selected user, see the status bar. [Applicable to Windows ME/2000/XP/2003.](#)
- **Disable Changes to Task Run Command** - This setting restricts changes to the run command and disables the Browse button in the Task Scheduler properties. Option affects selected user, see the status bar. [Applicable to Windows ME/2000/XP/2003.](#)
- **Disable Manual Task Control** - This restriction disables the ability for users to manually start and stop scheduled tasks. Tasks will continue to run automatically as configured. Option affects selected user, see the status bar. [Applicable to Windows ME/2000/XP/2003.](#)
- **Disable Drag and Drop Task Scheduling** - This restriction disables the ability to drag and drop programs into the Scheduled Tasks folder. This also disables the functionality of the Cut, Copy and Paste shortcut items. Option affects selected user, see the status bar. [Applicable to Windows ME/2000/XP/2003.](#)
- **Remove Advanced Option from Task Scheduler Wizard** - This setting removes the "Open advanced properties for this task when I click Finish" checkbox from the task creation wizard. This should be enabled to simplify the process for novice users. Option affects selected user, see the status bar. [Applicable to Windows ME/2000/XP/2003.](#)
- **Disable Changes to Task Properties** - This setting restricts users from changing the properties of an existing item in Task Scheduler. Option affects selected user, see the status bar. [Applicable to Windows ME/2000/XP/2003.](#)

See also:

- [Miscellaneous Software Restrictions.](#)
- [All restrictions.](#)
- [How to use.](#)
- [How to spy on your PC users.](#)
- [How to copy restrictions between users in the tree.](#)
- [How to Export/Import restrictions.](#)
- [How to lock your personal computer with a password.](#)
- [How to deny access to 1st Security Agent.](#)
- [About the program.](#)
- [Purpose of the program.](#)
- [User interface.](#)

Windows Media Player Security Restrictions

The following restrictions are available in this group:

- **Remove Radio Bar from Media Player** - Removes Radio Bar from Media Player Option affects the whole PC. Requires Windows Media Player 8.0 or greater. Restart Windows Media Player for the changes to take effect. [Applicable to Windows 95/98/ME/NT/2000/XP/2003.](#)
- **Remove Media Favorites from Media Player** - Removes Media Favorites from Media Player Option affects the whole PC. Requires Windows Media Player 8.0 or greater. Restart Windows Media Player for the changes to take effect. [Applicable to Windows 95/98/ME/NT/2000/XP/2003.](#)
- **Remove Find New Stations from Media Player** - Removes Find New Stations from Media Player Option affects the whole PC. Requires Windows Media Player 8.0 or greater. Restart Windows Media Player for the changes to take effect. [Applicable to Windows 95/98/ME/NT/2000/XP/2003.](#)
- **Hide Anchor Window in Media Player** - This setting hides the anchor window which is normally shown when using Windows Media Player in compact or skin mode. It also restricts users from re-enabling the window. Option affects the whole PC. Requires Windows Media Player 8.0 or greater. Restart Windows Media Player for the changes to take effect. [Applicable to Windows 95/98/ME/NT/2000/XP/2003.](#)
- **Disable Codec Downloads in Media Player** - This restriction prevents audio and video codecs from being downloaded in Windows Media Player. When enabled it also restricts the ability to re-enable downloads. Option affects the whole PC. Requires Windows Media Player 8.0 or greater. Restart Windows Media Player for the changes to take effect. [Applicable to Windows 95/98/ME/NT/2000/XP/2003.](#)
- **Disable Recent Files in Media Player** - This restriction will stop Windows Media Player from storing the names of the played media in the recent file list. Option affects selected user, see the status bar. This setting only effects Windows Media Player 8.0 or greater. [Applicable to Windows 95/98/ME/NT/2000/XP/2003.](#)
- **Hide the Network tab in Media Player** - This option hides the Network tab within the Options dialog box of Windows Media. Option affects selected user, see the status bar. This setting only effects Windows Media Player 8.0 or greater. [Applicable to Windows 95/98/ME/NT/2000/XP/2003.](#)
- **Hide the Security tab in Media Player** - This option hides the Security tab within the Options dialog box of Windows Media. Option affects selected user, see the status bar. This setting only effects Windows Media Player 8.0 or greater. [Applicable to Windows 95/98/ME/NT/2000/XP/2003.](#)
- **Hide the Privacy tab in Media Player** - This option hides the Privacy tab within the Options dialog box of Windows Media. Option affects selected user, see the status bar. This setting only effects Windows Media Player 8.0 or greater. [Applicable to Windows 95/98/ME/NT/2000/XP/2003.](#)
- **Prevent CD and DVD Media Information Retrieval** - This setting prevents the Player from automatically obtaining media information from the Internet for CDs and DVDs played by users. In addition, the Retrieve media information for CDs and DVDs from the Internet check box on the Privacy Options tab in the first use dialog box and on the Privacy tab in the Player are not selected and are not available. When this setting is not configured or is disabled, users can change the setting of the Retrieve media information for CDs and DVDs from the Internet check box. Option affects selected user, see the status bar. This setting only effects Windows Media Player 8.0 or greater. [Applicable to Windows 95/98/ME/NT/2000/XP/2003.](#)
- **Prevent Music File Media Information Retrieval** - This setting prevents the Player from automatically obtaining media information for music files such as Windows Media Audio (WMA) and MP3 files from the Internet. In addition, the Update my music files (WMA and MP3 files) by retrieving missing media information from the Internet check box in the first use dialog box and on the Privacy and Media Library tabs in the Player are not selected and are not available. When this setting is not configured or is disabled, users can change the setting of the Update my music files (WMA and MP3 files) by retrieving missing media information from the Internet check box. Option affects selected user, see the status bar. This setting only effects Windows Media Player 8.0 or greater. [Applicable to Windows 95/98/ME/NT/2000/XP/2003.](#)
- **Customize the Title of Windows Media Player** - This restriction lets you customize the Title of Windows Media Player to display your company information for instance. Option affects selected user, see the status bar. Reboot your PC to activate or deactivate this option. [Applicable to Windows](#)

[95/98/ME/NT/2000/XP/2003](#).

- **Disable Changing Skins in Media Player** - This restriction will set the Classic.wmz skin by default and disable an ability to change it to something else. In addition to that the user will not be able to switch the player to the full mode or use any features that are not available within the Classic.wmz skin. Option affects selected user, see the status bar. Reboot your PC to activate or deactivate this option. [Applicable to Windows 95/98/ME/NT/2000/XP/2003](#).

See also:

- [Miscellaneous Software Restrictions](#).
- [All restrictions](#).
- [How to use](#).
- [How to spy on your PC users](#).
- [How to copy restrictions between users in the tree](#).
- [How to Export/Import restrictions](#).
- [How to lock your personal computer with a password](#).
- [How to deny access to 1st Security Agent](#).
- [About the program](#).
- [Purpose of the program](#).
- [User interface](#).

Microsoft Office Security Restrictions

The following restrictions are available in this group:

- **Disable Password Caching for Outlook Internet Mail** - As a security precaution, you may want to disable the password caching ability for all Internet mail protocols (IMAP, POP and HTML) in Outlook. This setting will cause Outlook to request a password on each attempt to retrieve new mail. To enable this feature, you need to install Office XP SP1 or greater. Option affects selected user, see the status bar. [Applicable to Windows 95/98/ME/NT/2000/XP/2003.](#)
- **Disable Secondary Credentials Dialog Box in Outlook** - This setting allows you to disable the secondary credentials dialog box that is displayed when you start Outlook and log on to a Microsoft Exchange Server computer that is in a different domain than the client. This setting requires that Office XP Service Pack 1 (SP-1) or greater has been installed. Option affects selected user, see the status bar. [Applicable to Windows 95/98/ME/NT/2000/XP/2003.](#)
- **Remove Deleted Information from Outlook** - Even though an item may have been deleted in Outlook some remnants of it could still remain accessible in Outlook's data files. This setting causes Outlook to completely remove all deleted data upon shut down. This option is applicable to MS Outlook 2002 and higher. Option affects selected user, see the status bar. [Applicable to Windows 95/98/ME/NT/2000/XP/2003.](#)
- **Read Messages as Plain Text in Outlook** - This restriction is used to specify that all non-digitally-signed messages should be read as plain text. This is useful in avoiding a large number of security vulnerabilities caused by HTML viruses. This feature was added in Microsoft Office XP Service Pack 1 (SP-1). Option affects selected user, see the status bar. [Applicable to Windows 95/98/ME/NT/2000/XP/2003.](#)
- **Disable Windows Messenger in Outlook** - This setting can be used to disable the integration of Windows (MSN) Messenger so that it does not start when using Microsoft Outlook. This option is applicable to MS Outlook 2002 and higher. Option affects selected user, see the status bar. [Applicable to Windows 95/98/ME/NT/2000/XP/2003.](#)
- **Disable Outlook Today Page** - This restriction is used to disable the "Outlook Today" page in Microsoft Outlook. When this setting is applied the option to view Outlook Today will be removed. This option is applicable to MS Outlook 2002 and higher. Option affects selected user, see the status bar. [Applicable to Windows 95/98/ME/NT/2000/XP/2003.](#)
- **Disable Multi-User Editing in Microsoft Word** - Microsoft Office has a multi-user editing feature that allows you to open a shared document that is locked for editing by another user, edit a local copy of the document, and then merge those changes into the original document. This restriction disables such an ability. Option affects selected user, see the status bar. Reboot your PC to activate or deactivate this option. [Applicable to Windows 95/98/ME/NT/2000/XP/2003.](#)
- **Hide Clipboard Toolbar in Microsoft Office** - When you copy multiple items in any of the Microsoft Office applications, the Office Clipboard Toolbar appears on the screen allowing you to collect and paste multiple items from the toolbar. This restriction prevents the toolbar from appearing automatically. Option affects selected user, see the status bar. Reboot your PC to activate or deactivate this option. [Applicable to Windows 95/98/ME/NT/2000/XP/2003.](#)
- **Disable Auto-Complete in File Dialog Boxes of Office** - When you type a name of file in the Open, Save, or Save As dialog boxes in Microsoft Office applications such as Word or Excel, they automatically try to complete the name of file for you. This restriction disables this auto-complete feature. Option affects selected user, see the status bar. Reboot your PC to activate or deactivate this option. [Applicable to Windows 95/98/ME/NT/2000/XP/2003.](#)
- **Hide the Help Toolbar in Microsoft Office** - This restriction lets you hide the help toolbar located at the top right corner of all Microsoft Office applications that allows users to type a question for help. Option affects selected user, see the status bar. Reboot your PC to activate or deactivate this option. [Applicable to Windows 95/98/ME/NT/2000/XP/2003.](#)
- **Disable Error Reporting in Microsoft Office** - This restriction disables the feature in Microsoft Office that sends debug information to the Microsoft team in the event that an error occurs in one of the Microsoft Office applications such as MS Word, Excel, etc. Option affects selected user, see the status bar. Reboot your PC to activate or deactivate this option. [Applicable to Windows 95/98/ME/NT/2000/XP/2003.](#)

- **Disable Office Document Editing Time Tracking** - If you open an Office document, the open time is tracked and added to the Total Edit Time counter of the edited document. This restriction disables time tracking. Option affects selected user, see the status bar. Reboot your PC to activate or deactivate this option. [Applicable to Windows 95/98/ME/NT/2000/XP/2003.](#)
- **Block HTTP Linked Images in Microsoft Office Documents** - When enabled, this restriction blocks linked Hypertext Transfer Protocol (HTTP) images, which are placed in Microsoft Office documents. This is very useful if you want to avoid the ability for documents to be tracked by third parties using hidden images. Option affects selected user, see the status bar. Reboot your PC to activate or deactivate this option. [Applicable to Windows 95/98/ME/NT/2000/XP/2003.](#)
- **Remove the My Computer Item from the Office Places Bar** - This restriction can be used for removing the My Computer item from the Places Bar of Open and Save As dialog boxes in Microsoft Office. Option affects selected user, see the status bar. Reboot your PC to activate or deactivate this option. [Applicable to Windows 95/98/ME/NT/2000/XP/2003.](#)
- **Remove the Desktop Item from the Office Places Bar** - This restriction can be used for removing the Desktop item from the Places Bar of Open and Save As dialog boxes in Microsoft Office. Option affects selected user, see the status bar. Reboot your PC to activate or deactivate this option. [Applicable to Windows 95/98/ME/NT/2000/XP/2003.](#)
- **Remove the Favorites Item from the Office Places Bar** - This restriction can be used for removing the Favorites item from the Places Bar of Open and Save As dialog boxes in Microsoft Office. Option affects selected user, see the status bar. Reboot your PC to activate or deactivate this option. [Applicable to Windows 95/98/ME/NT/2000/XP/2003.](#)
- **Remove the My Documents Item from the Office Places Bar** - This restriction can be used for removing the My Documents item from the Places Bar of Open and Save As dialog boxes in Microsoft Office. Option affects selected user, see the status bar. Reboot your PC to activate or deactivate this option. [Applicable to Windows 95/98/ME/NT/2000/XP/2003.](#)
- **Remove the History Item from the Office Places Bar** - This restriction can be used for removing the History item from the Places Bar of Open and Save As dialog boxes in Microsoft Office. Option affects selected user, see the status bar. Reboot your PC to activate or deactivate this option. [Applicable to Windows 95/98/ME/NT/2000/XP/2003.](#)
- **Remove the My Network Places Item from the Office Places Bar** - This restriction can be used for removing the My Network Places item from the Places Bar of Open and Save As dialog boxes in Microsoft Office. Option affects selected user, see the status bar. Reboot your PC to activate or deactivate this option. [Applicable to Windows 95/98/ME/NT/2000/XP/2003.](#)
- **Custom Outlook Today URL** - Use this option to specify a URL that will be used as Outlook Today page when the user opens Microsoft Outlook. You should enter a web page URL such as: <http://www.mywebsite.com/today.html> or a local file URL can be used instead. Option affects selected user, see the status bar. Reboot your PC to activate or deactivate this option. [Applicable to Windows 95/98/ME/NT/2000/XP/2003.](#)

See also:

- [Miscellaneous Software Restrictions.](#)
- [All restrictions.](#)
- [How to use.](#)
- [How to spy on your PC users.](#)
- [How to copy restrictions between users in the tree.](#)
- [How to Export/Import restrictions.](#)
- [How to lock your personal computer with a password.](#)
- [How to deny access to 1st Security Agent.](#)
- [About the program.](#)
- [Purpose of the program.](#)
- [User interface.](#)

[How to avoid locking yourself out of your PC](#)

Please, be careful with the following option:

- [Require User's Validation for Windows Access.](#)

Be careful! Think about all your steps! Read the help file of the program carefully before turning on any options and you will never have any problems with the program!

See also:

- [Restrictions.](#)
- [How to deny access to 1st Security Agent.](#)
- [How to use.](#)
- [How to spy on your PC users.](#)
- [How to copy restrictions between users in the tree.](#)
- [How to Export/Import restrictions.](#)
- [How to lock your personal computer with a password.](#)
- [About the program.](#)
- [Purpose of the program.](#)
- [How to register.](#)
- [User interface.](#)

Import and Export of Restrictions

The program has a very useful feature, which enables you to make backups of user restrictions in files, clone restrictions between equal PCs, or easily apply the same restrictions to any PC users on any PC where you run 1st Security Agent.

Export feature offers you to select whether you want to export all user restrictions to a single file or just restrictions of a selected user. In the first case, you will get a file, which will contain user information and restrictions associated with each user. This file can be used for backup purposes to restore restrictions of all users by using the Import feature, or it can be used for cloning restrictions between several equal PCs where the set of users is the same as on the source PC used to create the file. In the second case, when you select to export restrictions of any selected user, the program will create a file with restrictions, which does not contain user information (it will contain just restriction set of a selected user). This file can be used for applying its restrictions to a list of selected on import users. It's very useful when you need to copy restrictions between different users on different PCs.

Import feature allows you to import restrictions from a file made by the Export feature. If the file does not contain user information, then the program will ask you to select users which will accept the restrictions. If the file contains user information, then the program will just apply restrictions to the users, which are listed in the file. If PC does not contain users listed in the file, restrictions will not be applied to the users.

To copy restrictions between users shown in the tree, use the [Copy Restrictions](#) feature.

See also:

- [All restrictions](#).
- [How to use](#).
- [How to spy on your PC users](#).
- [How to copy restrictions between users in the tree](#).
- [How to lock your personal computer with a password](#).
- [How to deny access to 1st Security Agent](#).
- [About the program](#).
- [Purpose of the program](#).
- [User interface](#).

How to copy restrictions between users in the tree

You can easily copy restrictions between users shown in the tree. It is also possible to copy different branches of restrictions between users.

- To copy all restrictions to other users, just select a root user item in the tree then click the right mouse button and select the item CopyTo from the context menu. The dialog box with the user list will appear on the screen, and all you need is to check all users, which will accept restrictions of the selected user.
- To copy only selected branch of restrictions to other users, just select required node under any user item in the tree then click the right mouse button and select the item CopyTo from the context menu. The dialog box with the user list will appear on the screen, and all you need is to check all users, which will accept restrictions of the selected user branch.
- To copy restrictions between users situated on different PCs, use the Export/Import feature. You just will need to export restrictions to a file, which can be used to import restrictions on any other PC.

See also:

- All restrictions.
- How to use.
- How to spy on your PC users.
- How to Export/Import restrictions.
- How to lock your personal computer with a password.
- How to deny access to 1st Security Agent.
- About the program.
- Purpose of the program.
- User interface.

[How to spy on your PC users](#)

The program has a built-in spy agent that allows you to accumulate some statistics of working of your users. Each user has its own log file where its statistics is saved. The program accumulates information about each user session, namely starting time, completion time, and applications, which a user was using.

To see statistics of a user, open the statistics viewer by using the [File-Statistics](#) item of the [Main Menu](#). All user sessions in details will be displayed on the screen.

You can switch between users to see statistics for different users by using the combobox situated at the right bottom side of the viewer.

To find something in the user's log file, use the [Find](#) and [Find Next](#) buttons at the bottom of the window.

To save the user's log to a text file in plain-text format, use the [Save](#) buttons at the bottom of the window. After creating text file, you can load it to any text editor like Microsoft Word for further processing.

You can also print the log file on your printer using the button [Print](#) on the viewer.

To empty user's log file, use the Empty button at the bottom of the window. Be aware that appropriate log file will be deleted from your hard disk at all!

To make statistics working, you need to enable it by using the checkbox EnableStatistics, which is situated at the left bottom side of the viewer.

See also:

- [Restrictions.](#)
- [How to deny access to 1st Security Agent.](#)
- [How to lock your personal computer with a password.](#)
- [How to use.](#)
- [About the program.](#)
- [Purpose of the program.](#)
- [How to register.](#)
- [User interface.](#)

Other products - <http://www.softheap.com>

We have a lot of different software on our web site such as:

- **Security Software;**
- **File and Folder Protecting Software;**
- **SMTP Servers;**
- **Mass Mailers;**
- **Email Searchers;**
- **Logic Games.**

Please, visit our web site for more information:

- <http://www.softheap.com>

